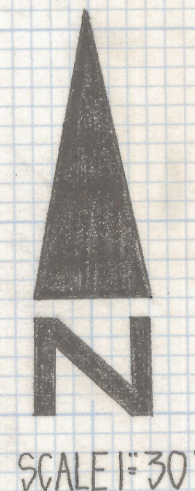
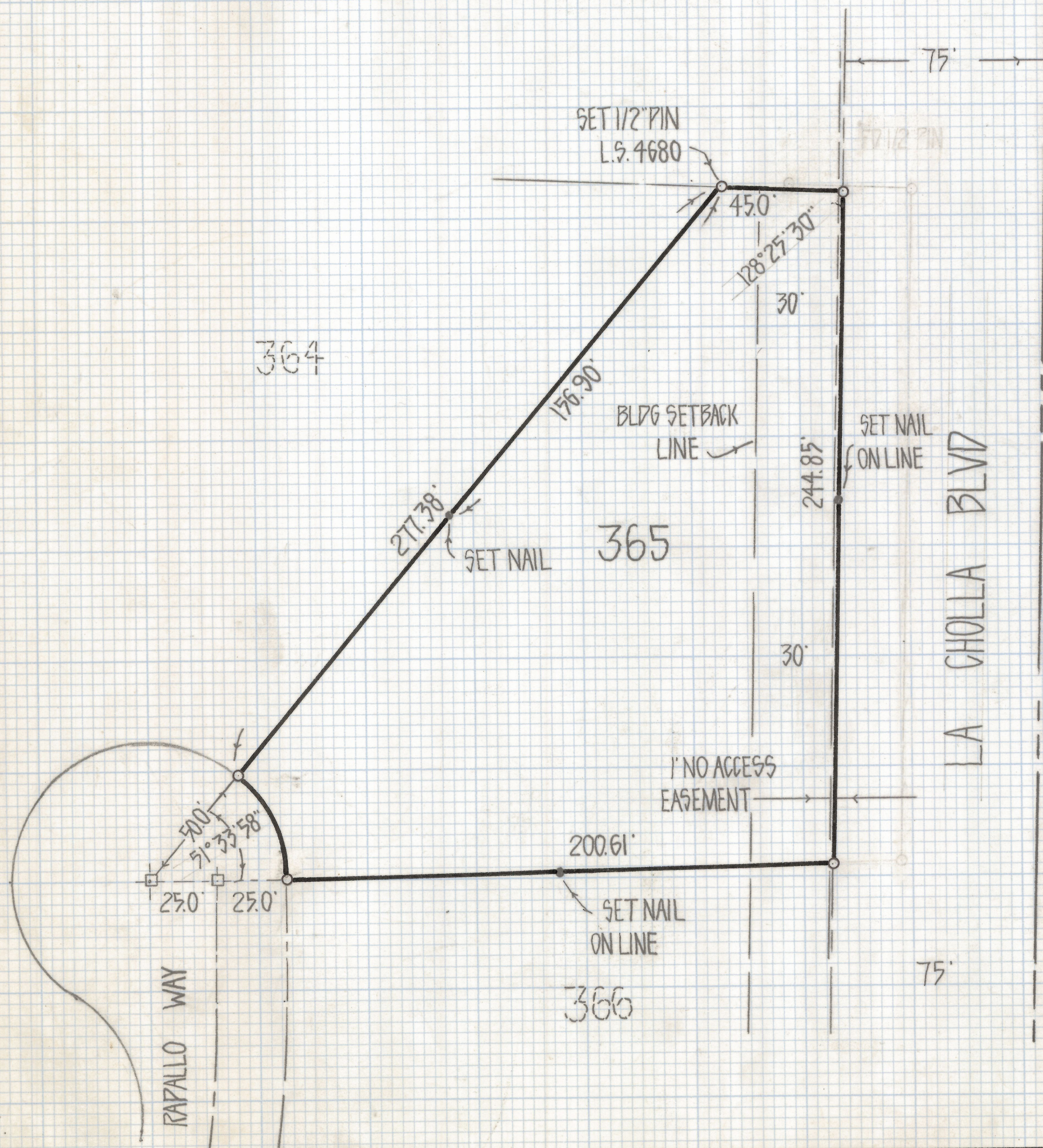


# **DISCLAIMER:**

**This unrecorded Record of Survey was donated to the City of Tucson. The City of Tucson provides this data for your personal use "as is." Additionally, the City of Tucson provides this information with the understanding that it is not guaranteed to be accurate, correct or complete and conclusions drawn from such information are the responsibility of the user.**





### RESULTS OF SURVEY

OF LOT 365 OF CASAS ADOBES WEST NO 2 AS RECORDED  
IN BOOK 28 OF MAPS AND PLATS AT PAGE 96 IN THE  
OFFICE OF THE PIMA COUNTY RECORDER PIMA COUNTY  
ARIZONA

### NOTES

- (1)  $\circ$  INDICATES 1/2" PIN MKD P.E. 8684 UNLESS NOTED
- (2)  $\oplus$  INDICATES 2" BRASS PLUG IN CONC MKD P.E. 8684 FOUND UNLESS NOTED



ROBERT F. MELLEN  
REGISTERED LAND SURVEYOR  
TUCSON, ARIZONA  
JOB # 80-102  
Z-2018-589