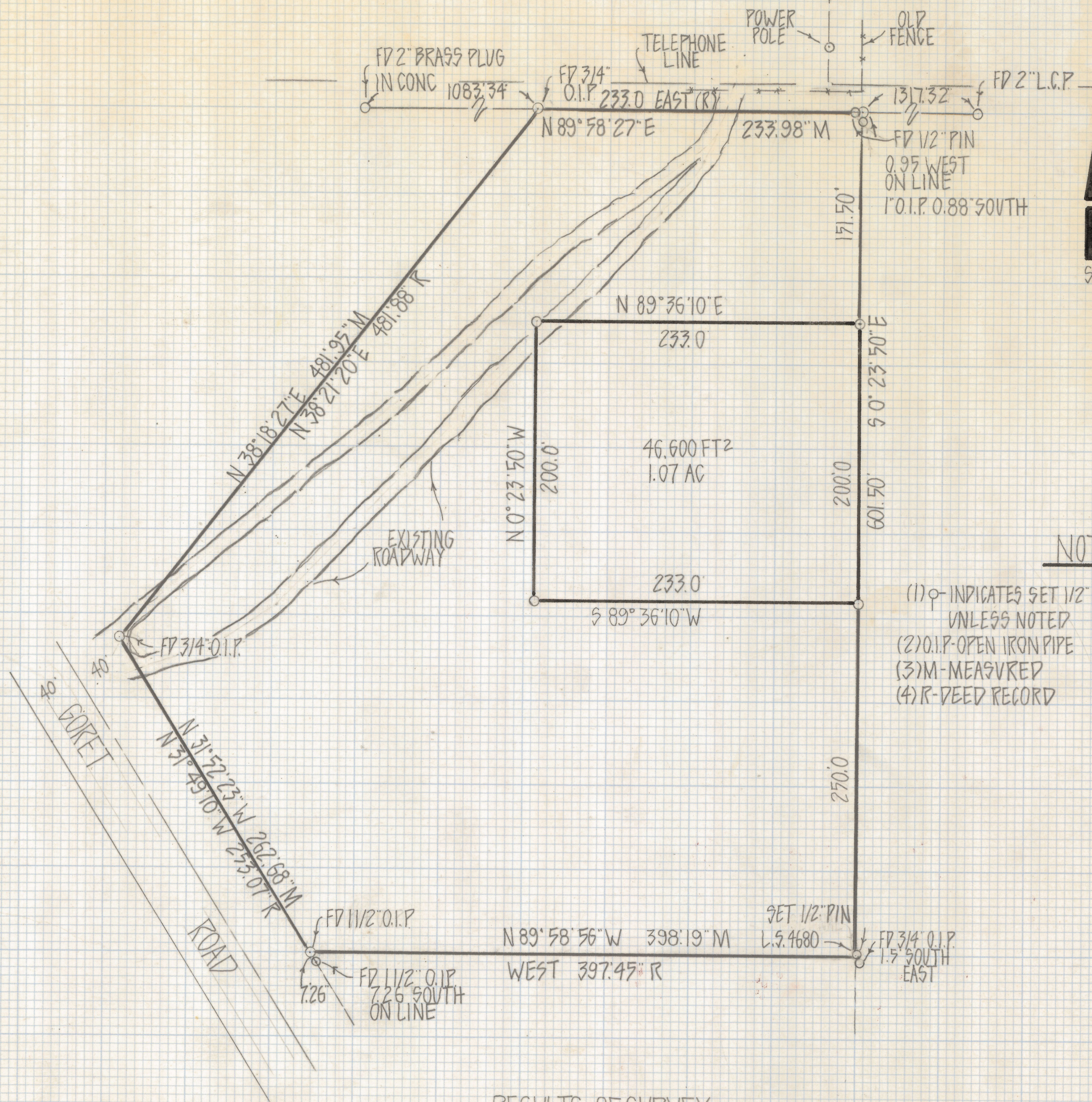


DISCLAIMER:

This unrecorded Record of Survey was donated to the City of Tucson. The City of Tucson provides this data for your personal use "as is." Additionally, the City of Tucson provides this information with the understanding that it is not guaranteed to be accurate, correct or complete and conclusions drawn from such information are the responsibility of the user.



SCALE 1"=60'

NOTES

- (1) ♀- INDICATES SET 1/2" PIN MKD L.S. 4680 UNLESS NOTED
- (2) O.I.P.- OPEN IRON PIPE
- (3) M- MEASURED
- (4) R- DEED RECORD

RESULTS OF SURVEY

OF A PORTION OF THE NORTHWEST QUARTER OF THE NORTHEAST QUARTER OF SECTION 32, TOWNSHIP 13 SOUTH RANGE 13 EAST, GILA AND SALT RIVER BASE AND MERIDIAN PIMA COUNTY, ARIZONA



ROBERT F. MELLEN
REGISTERED LAND SURVEYOR
TUCSON, ARIZONA
JOB # 80-109
Z - 2018-593