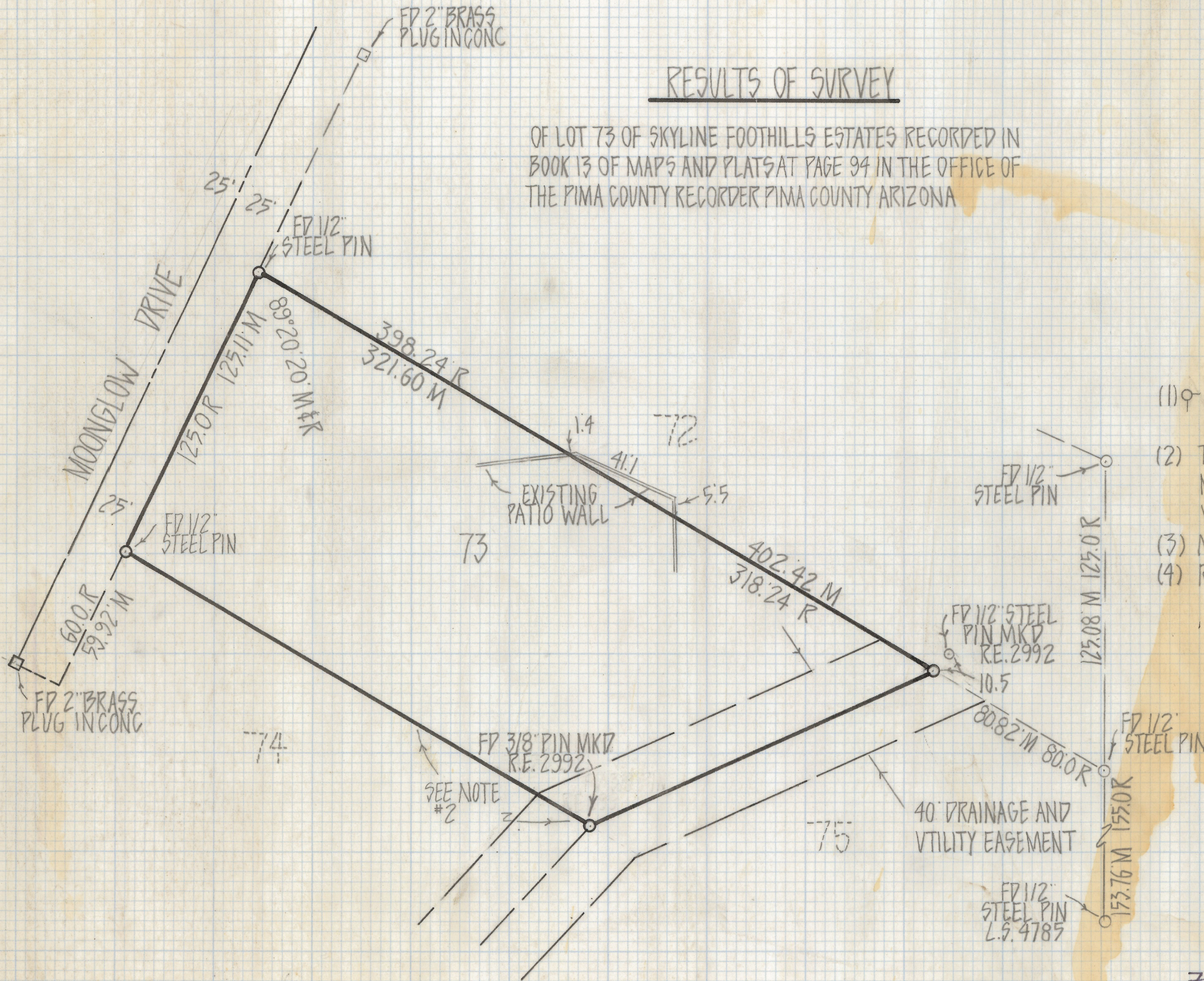


DISCLAIMER:

This unrecorded Record of Survey was donated to the City of Tucson. The City of Tucson provides this data for your personal use "as is." Additionally, the City of Tucson provides this information with the understanding that it is not guaranteed to be accurate, correct or complete and conclusions drawn from such information are the responsibility of the user.

RESULTS OF SURVEY

OF LOT 73 OF SKYLINE FOOTHILLS ESTATES RECORDED IN
BOOK 13 OF MAPS AND PLATS AT PAGE 94 IN THE OFFICE OF
THE PIMA COUNTY RECORDER PIMA COUNTY ARIZONA



NOTES

- (1) ♀ INDICATES 1/2" STEEL PIN SET MKD L.S. 4680 UNLESS NOTED
- (2) THE SOUTHEAST CORNER OF LOT 73 WAS NOT SURVEYED. CORNER FOUND BUT NOT VERIFIED
- (3) M- MEASURED
- (4) R- MAP RECORD



ROBERT F. MELLEN
REGISTERED LAND SURVEYOR
TUCSON, ARIZONA

Z-2018-597 1/2 JOB# 80-114

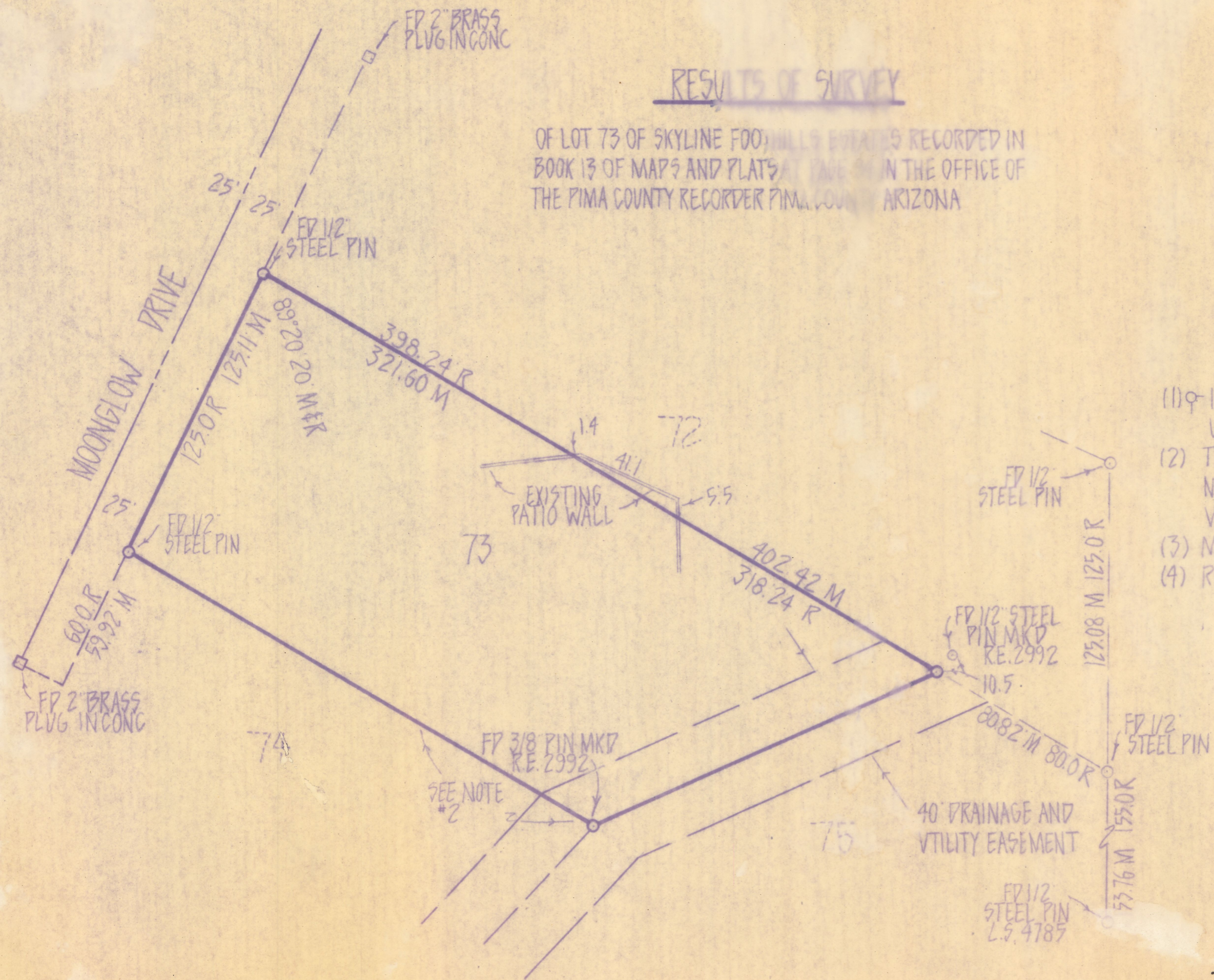
RESULTS OF SURVEY

OF LOT 73 OF SKYLINE FOOTHILLS ESTATES RECORDED IN BOOK 13 OF MAPS AND PLATS AT PAGE 1 IN THE OFFICE OF THE PIMA COUNTY RECORDER PIMA COUNTY ARIZONA



NOTES

- (1) ♀ INDICATES 1/2" STEEL PIN SET MKD L.S. 4680 UNLESS NOTED
- (2) THE SOUTHEAST CORNER OF LOT 73 WAS NOT SURVEYED CORNER FOUND BUT NOT VERIFIED
- (3) M- MEASURED
- (4) R- MAP RECORD



ROBERT F. MELLEN
 REGISTERED LAND SURVEYOR
 TUCSON, ARIZONA
 JOB# 80-114

Z-2018-597 2/2