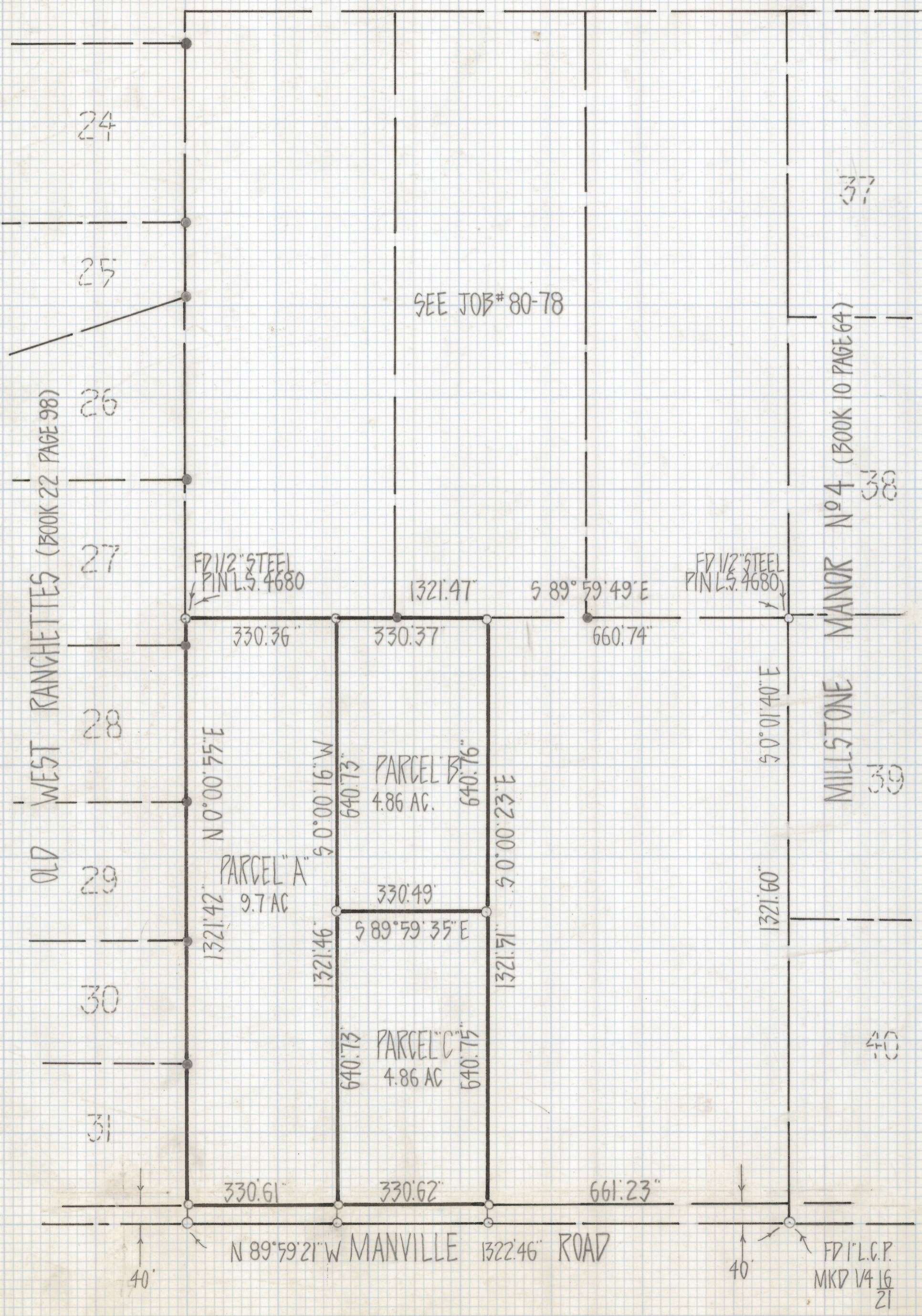
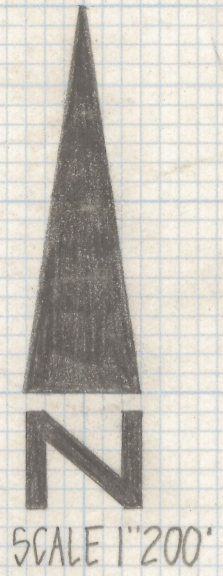


DISCLAIMER:

This unrecorded Record of Survey was donated to the City of Tucson. The City of Tucson provides this data for your personal use "as is." Additionally, the City of Tucson provides this information with the understanding that it is not guaranteed to be accurate, correct or complete and conclusions drawn from such information are the responsibility of the user.



RESULTS OF SURVEY

OF THE WEST HALF OF THE SOUTHEAST QUARTER OF THE SOUTHWEST QUARTER SECTION 16 TOWNSHIP 13 SOUTH RANGE 11 EAST GILA AND SALT RIVER BASE AND MERIDIAN PIMA COUNTY ARIZONA (EXCEPT THE SOUTH 40 FEET)

NOTES

- (1) ♀ INDICATES SET 1/2" STEEL PIN MKD L.S. 4680 UNLESS NOTED
- (2) ♂ INDICATES 1/2" STEEL PIN FOUND
- (3) SEE JOB# 80-78



ROBERT F. MELLEN
REGISTERED LAND SURVEYOR
TUCSON, ARIZONA
JOB# 80-116

Z-2018-599