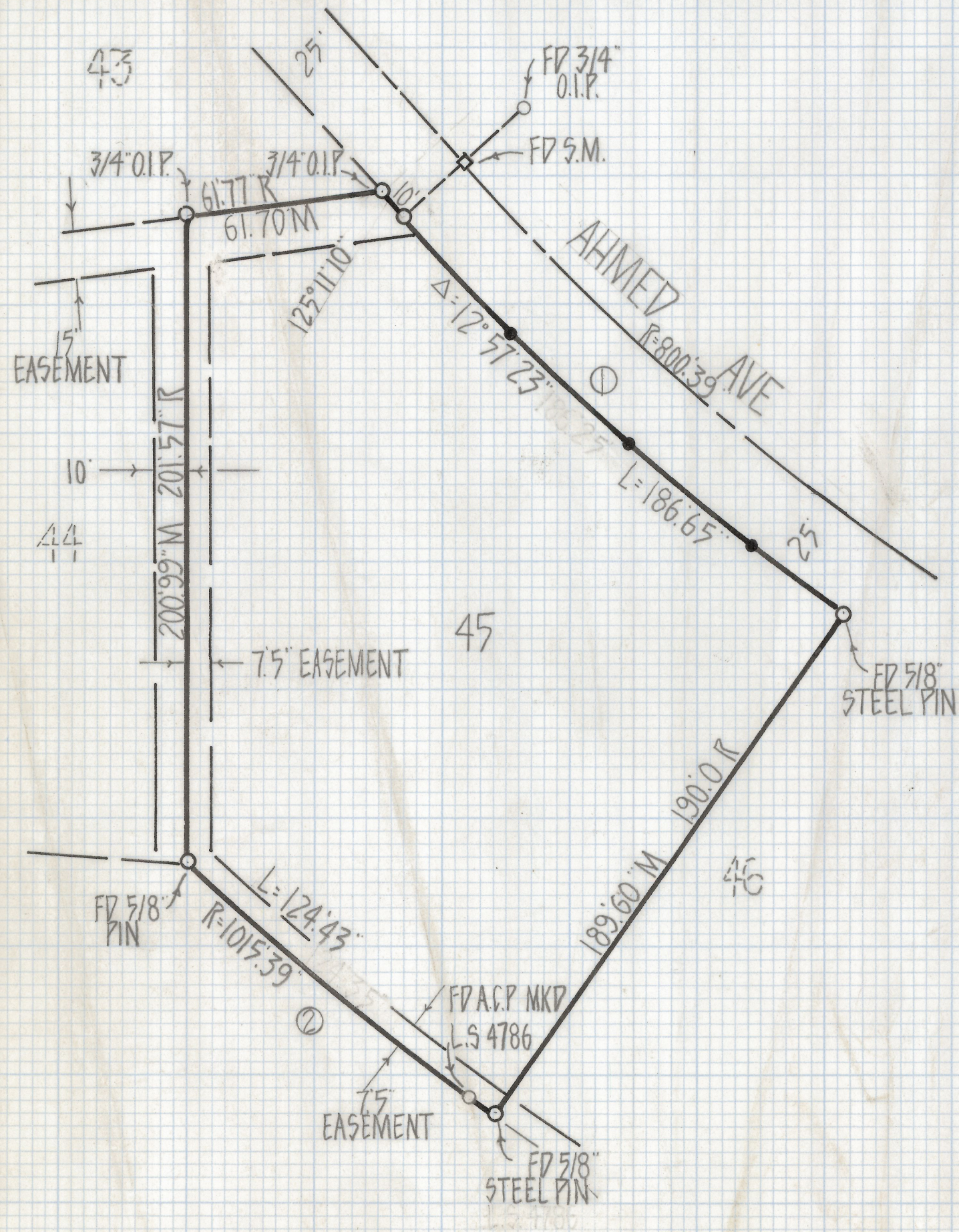
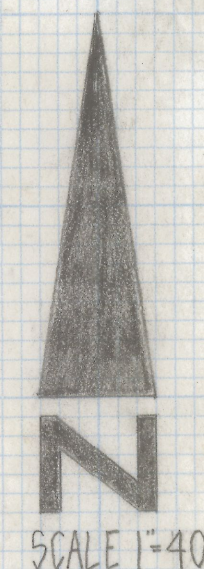


DISCLAIMER:

This unrecorded Record of Survey was donated to the City of Tucson. The City of Tucson provides this data for your personal use "as is." Additionally, the City of Tucson provides this information with the understanding that it is not guaranteed to be accurate, correct or complete and conclusions drawn from such information are the responsibility of the user.



CURVE DATA					
Nº	RADIUS	DELTA	LENGHT	TANGENT	CHORD
1	825.39	12°57'23"	186.65'	93.72'	186.25'
2	1015.39	7°01'16"	124.43'	62.29'	124.35'



RESULTS OF SURVEY

OF LOT 45 ORACLE HEIGHTS ESTATES AS RECORDED IN BOOK 14
OF MAPS AND PLATS AT PAGE 19 IN THE OFFICE OF THE PIMA
COUNTY RECORDER PIMA COUNTY ARIZONA

NOTES

- (1) ♀ INDICATES SET 1/2" PIN MKD L.S. 4680 UNLESS NOTED
- (2) • INDICATES SET NAIL
- (3) M-MEASURED
- (4) R-MAP RECORD



Z-2018-601
ROBERT F. MELLEN
REGISTERED LAND SURVEYOR
TUCSON, ARIZONA
JOB# 80-118