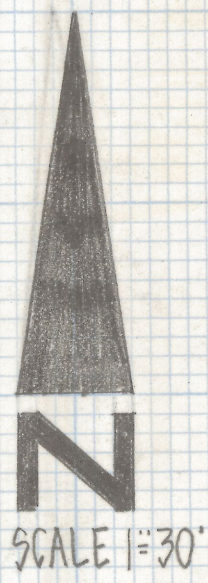
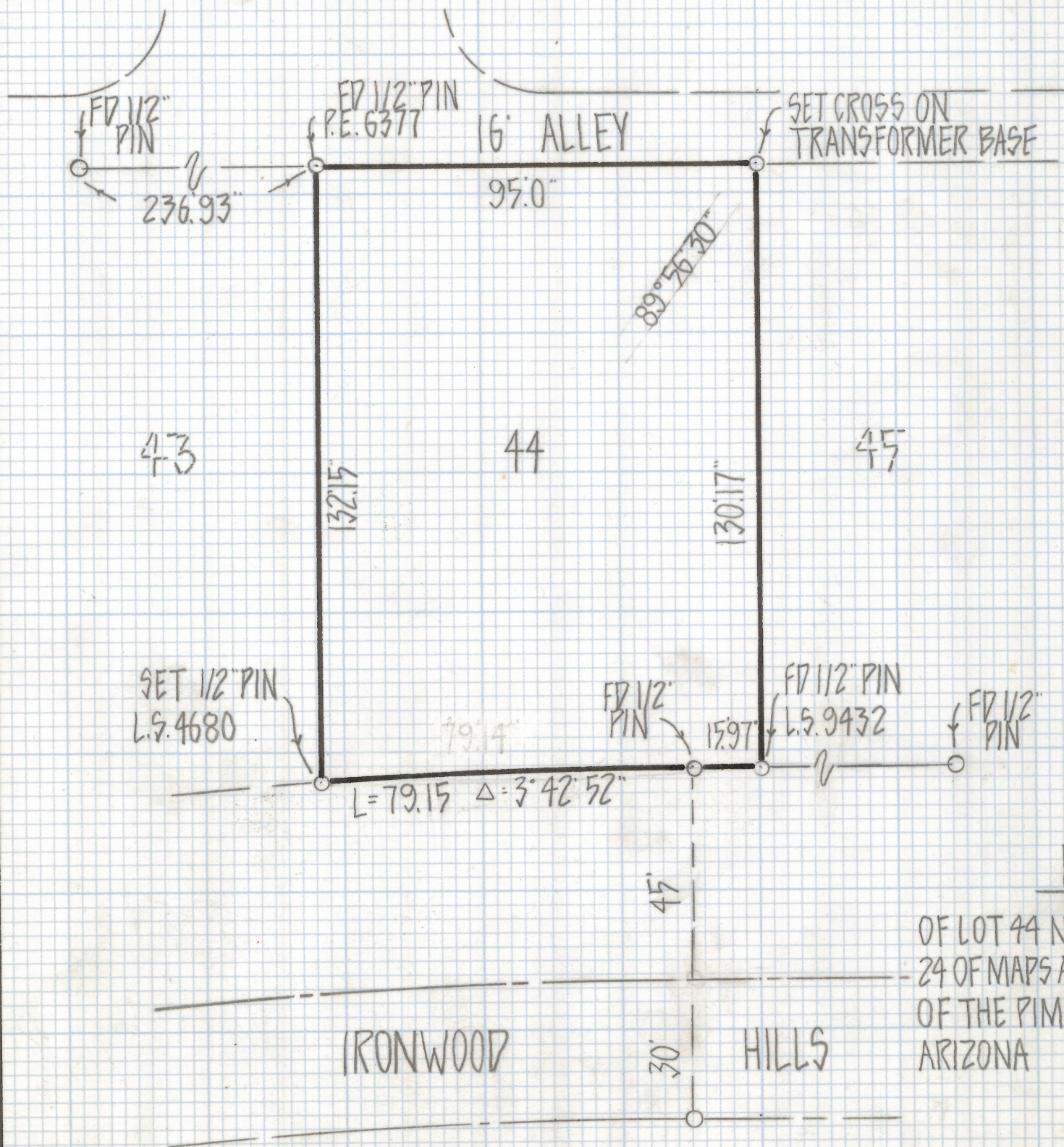


DISCLAIMER:

This unrecorded Record of Survey was donated to the City of Tucson. The City of Tucson provides this data for your personal use "as is." Additionally, the City of Tucson provides this information with the understanding that it is not guaranteed to be accurate, correct or complete and conclusions drawn from such information are the responsibility of the user.



RESULTS OF SURVEY

OF LOT 44 NEW DAY WEST RECORDED IN BOOK
 24 OF MAPS AND PLATS AT PAGE 7 IN THE OFFICE
 OF THE PIMA COUNTY RECORDER PIMA COUNTY
 ARIZONA

CURVE DATA				
Nº	RADIUS	DELTA	TANGENT	LENGTH
1	1220.92	3°42'52"	39.59"	79.15"



Z-2018-603
 ROBERT F MELLEN
 REGISTERED LAND SURVEYOR
 TUCSON, ARIZONA
 JOB #80-120