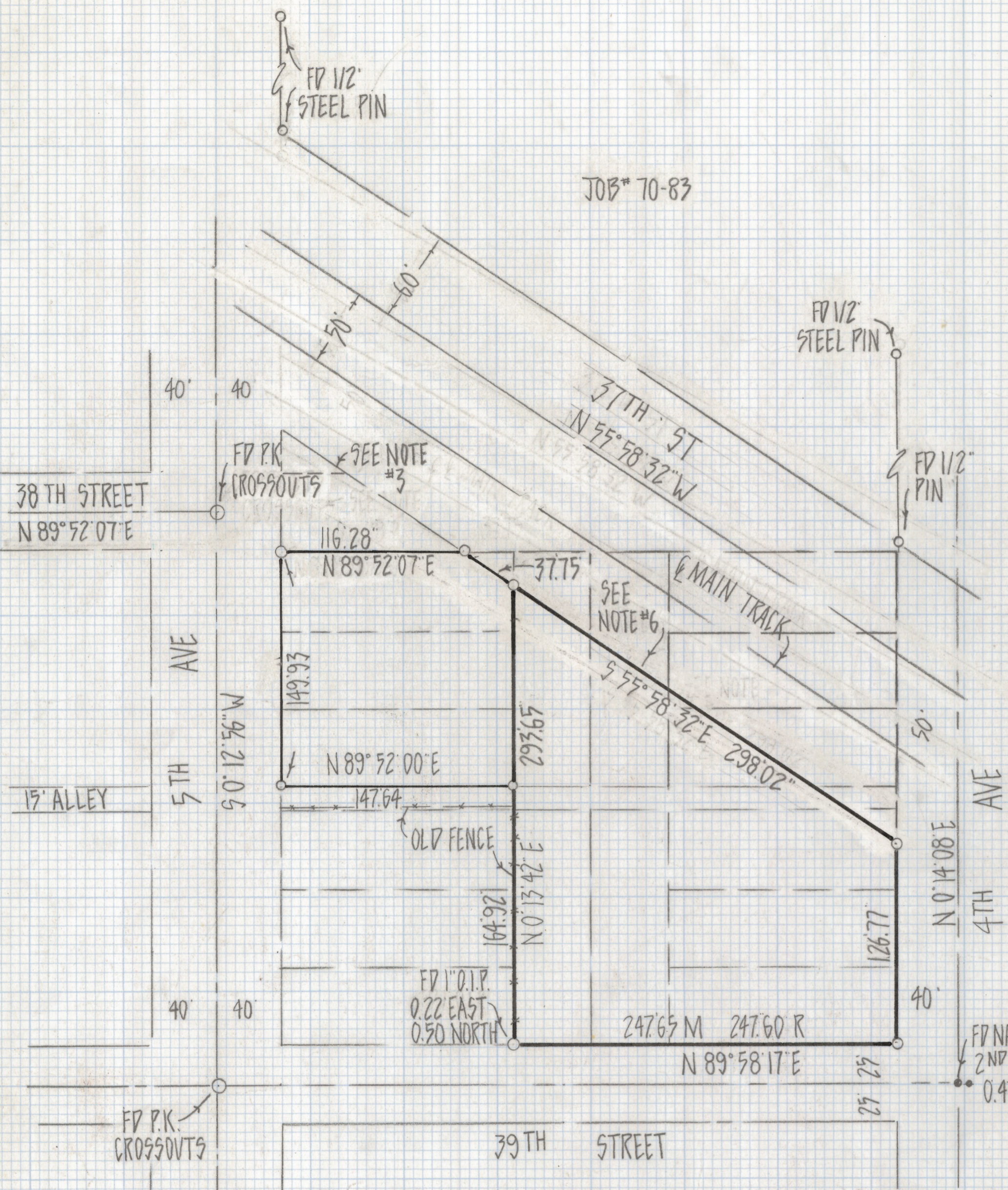
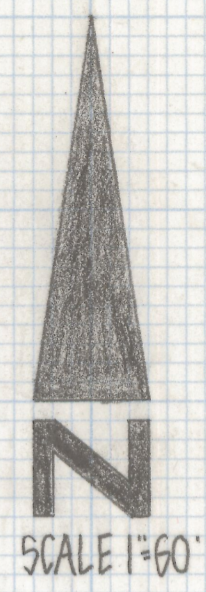


# **DISCLAIMER:**

**This unrecorded Record of Survey was donated to the City of Tucson. The City of Tucson provides this data for your personal use "as is." Additionally, the City of Tucson provides this information with the understanding that it is not guaranteed to be accurate, correct or complete and conclusions drawn from such information are the responsibility of the user.**



JOB# 70-83



NOTES

- (1)  $\odot$  INDICATES SET 1/2" STEEL PIN MKD L.S. 4680 UNLESS NOTED
- (2) SEE JOB# 70-83 AND SURVEY BY T.N STEVENS DATED OCT 1946
- (3) WE FIND NO RECORDS OF ABANDONMENT OF PORTIONS OF 38TH STREET
- (4) M- MEASURED
- (5) R- MAP RECORD
- (6) THIS LINE FALLS IN THE CENTERLINE OF A EXISTING SPVR TRACK

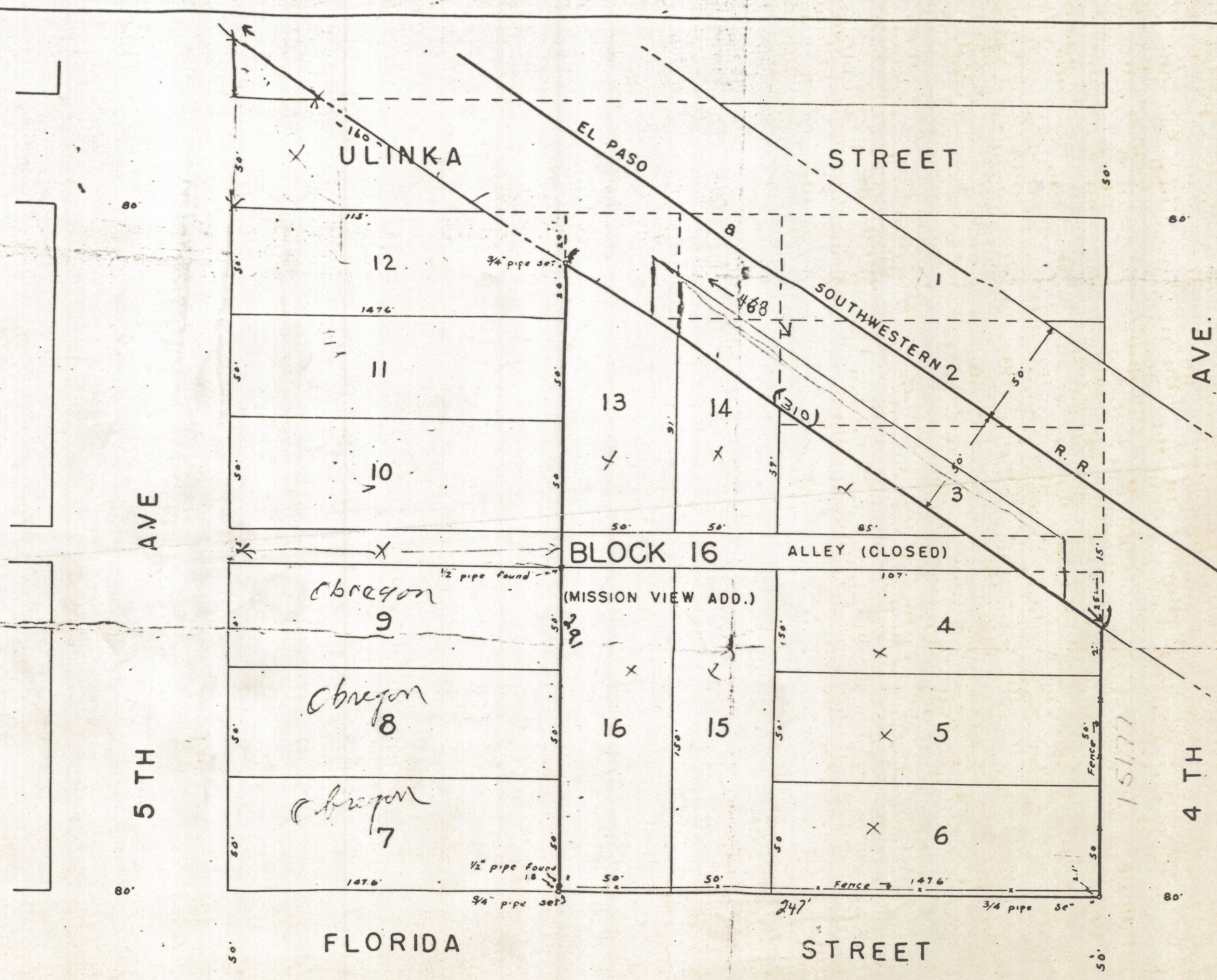
RESULTS OF SURVEY

OF PORTIONS OF BLOCK 16 AND 13 AND ABANDONED STREETS AND ALLEYS OF MISSION VIEW ADDITION RECORDED IN BOOK 3 OF MAPS AND PLATS AT PAGE 21 IN THE OFFICE OF THE PIMA COUNTY RECORDER, PIMA COUNTY ARIZONA



Z-2018-607 1/2  
 ROBERT F. MELLEN  
 REGISTERED LAND SURVEYOR  
 TUCSON, ARIZONA  
 JOB# 80-125

REVISED 10/23/80



HARLOW D. PHELPS  
 REGISTERED ENGINEER  
 LAND AND MINERAL  
 SURVEYING  
 DRAFTING AND MAPPING  
 PHONE 4934 532 E. 1ST ST.  
 TUCSON, ARIZONA

REGISTERED CIVIL ENGINEER  
 CERTIFICATE EXPIRES  
 T. H. STEVENS  
 DEC. 31, 1946  
 ARIZONA, U.S.A.

SCALE 1" = 50'

PROPERTY OF ENGLISH BUTANE CORP.

Oct. 1946

7-2018-607 2/2

By *[Signature]*  
 Reg. Eng.

Fred Contzen  
 611 S 5TH AVE

80-125