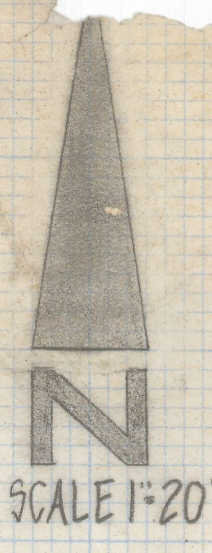
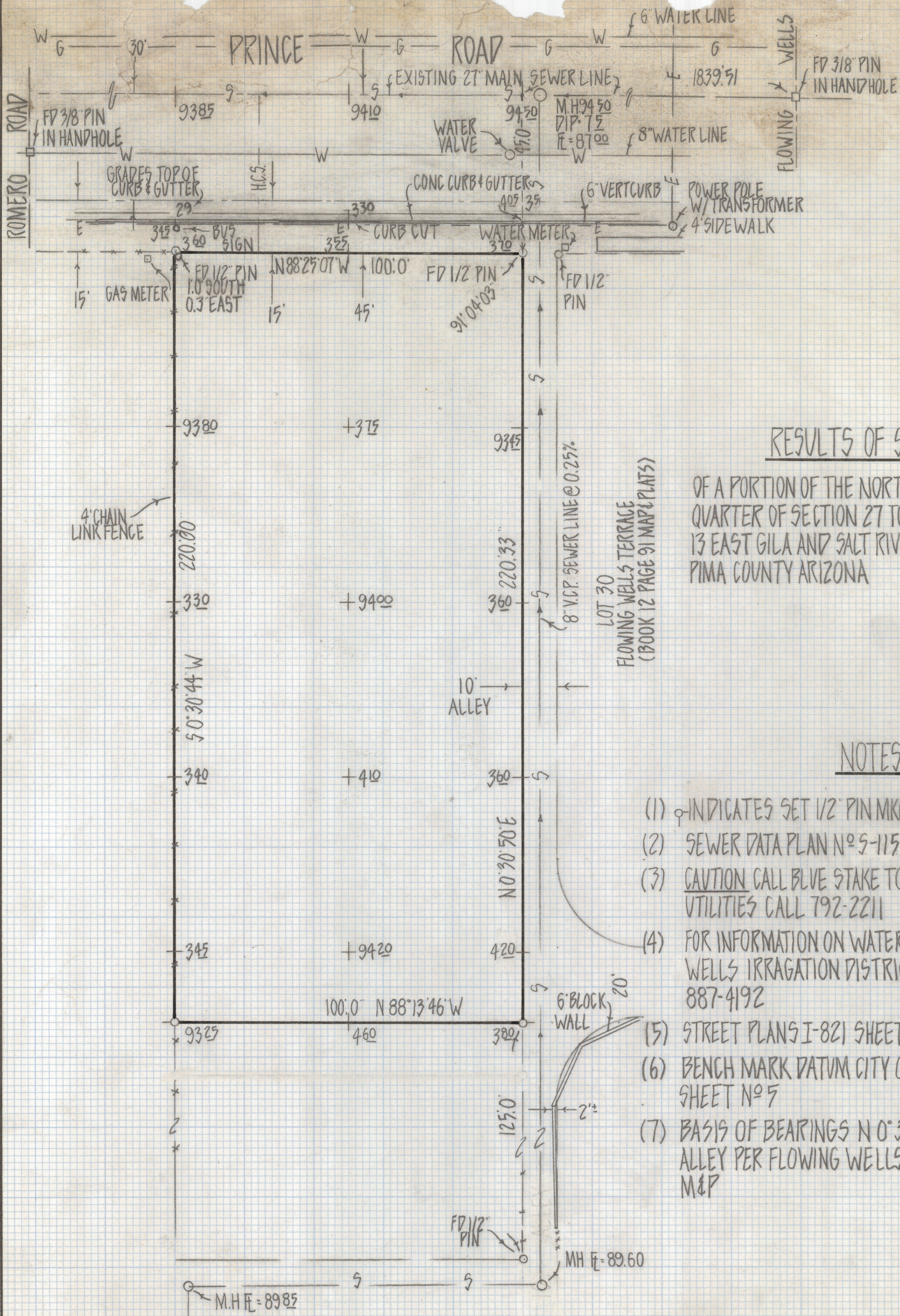


# **DISCLAIMER:**

**This unrecorded Record of Survey was donated to the City of Tucson. The City of Tucson provides this data for your personal use "as is." Additionally, the City of Tucson provides this information with the understanding that it is not guaranteed to be accurate, correct or complete and conclusions drawn from such information are the responsibility of the user.**





RESULTS OF SURVEY

OF A PORTION OF THE NORTH HALF OF THE SOUTHEAST QUARTER OF SECTION 27 TOWNSHIP 13 SOUTH RANGE 13 EAST GILA AND SALT RIVER BASE AND MERIDIAN PIMA COUNTY ARIZONA

NOTES

- (1) ♀ INDICATES SET 1/2" PIN MKD L.S. 4680 UNLESS NOTED
- (2) SEWER DATA PLAN N° 5-115 SHEET 3 PIMA COUNTY ARIZONA
- (3) CAUTION CALL BLUE STAKE TO VERIFY UNDERGROUND UTILITIES CALL 792-2211
- (4) FOR INFORMATION ON WATER LINES CONTACT FLOWING WELLS IRRIGATION DISTRICT 900 W PRINCE ROAD 887-4192
- (5) STREET PLANS I-821 SHEET N° 5 OF 24 CITY OF TUCSON
- (6) BENCH MARK DATUM CITY OF TUCSON PLAN I-821 SHEET N° 5
- (7) BASIS OF BEARINGS N 0° 30' 50" E WEST LINE OF 10' ALLEY PER FLOWING WELLS TERRACE BOOK 12 PAGE 91 M&P



ROBERT F. MELLEN  
 REGISTERED LAND SURVEYOR  
 TUCSON, ARIZONA  
 JOB # 80-138

Z-2018-616