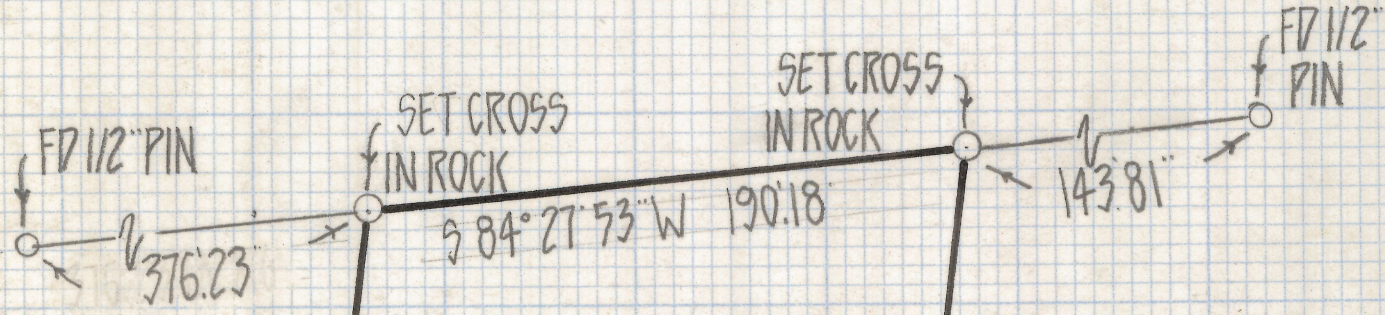
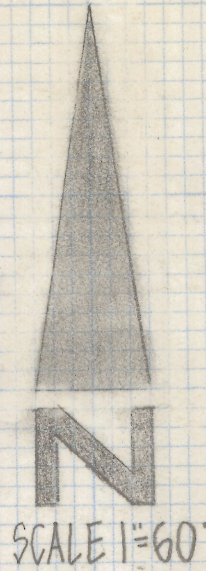


DISCLAIMER:

This unrecorded Record of Survey was donated to the City of Tucson. The City of Tucson provides this data for your personal use "as is." Additionally, the City of Tucson provides this information with the understanding that it is not guaranteed to be accurate, correct or complete and conclusions drawn from such information are the responsibility of the user.

MT. LEMMON HWY



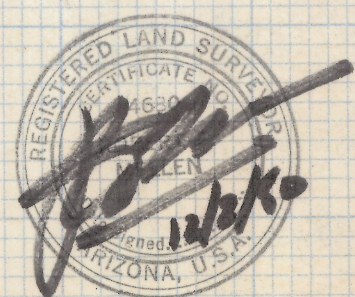
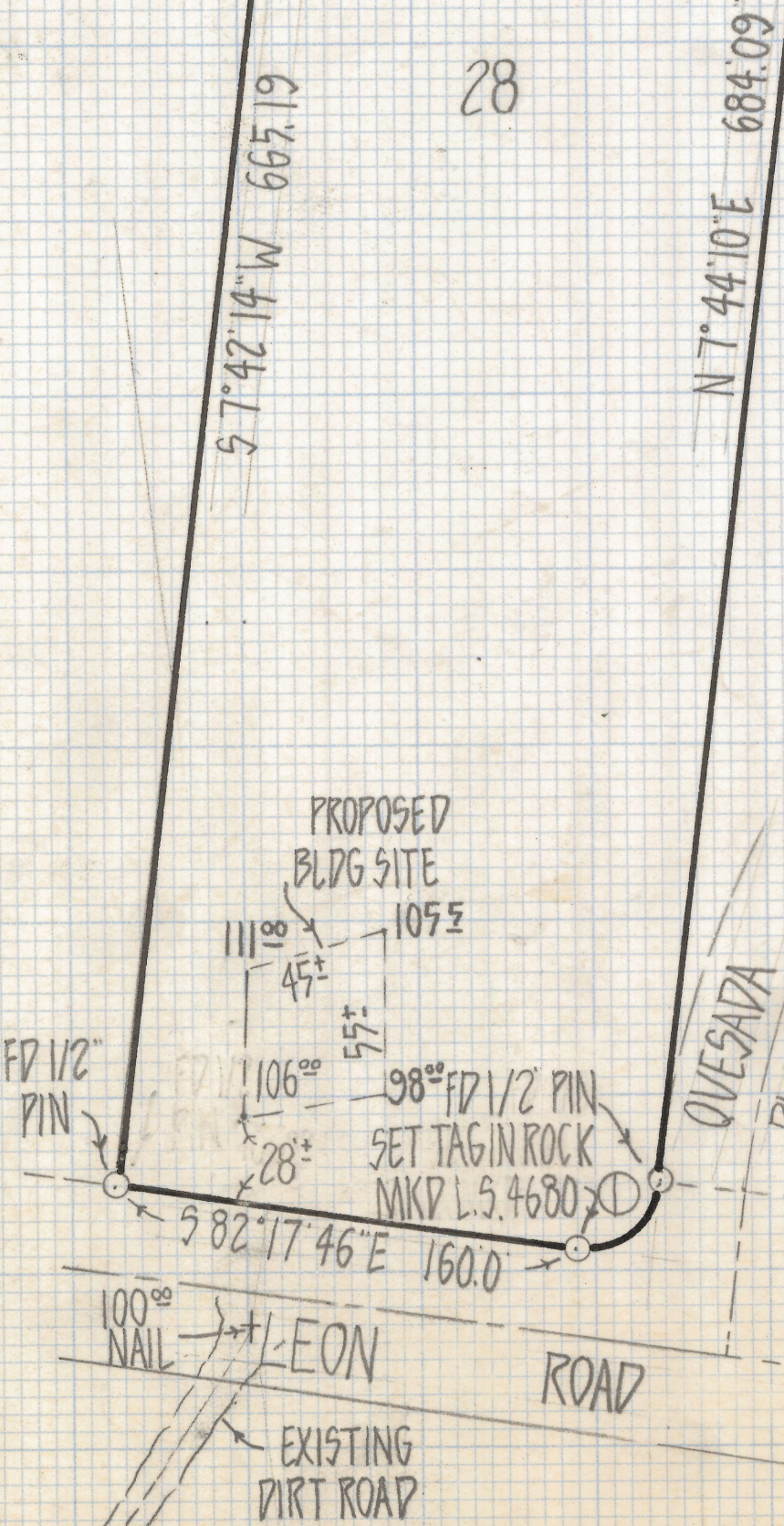
CURVE DATA				
NO.	RADIUS	DELTA	TANGENT	LENGTH
1	25.0	89° 58' 04"	24.99"	39.26

RESULTS OF SURVEY

OF LOT 28 OF MILAGROSA HILLS RECORDED IN BOOK 16 OF MAPS AND PLATS AT PAGE 59 IN THE OFFICE OF THE PIMA COUNTY RECORDER PIMA COUNTY ARIZONA

NOTES

- (1) THE CONSTRUCTED ROAD DOES NOT FOLLOW THE PLAT



ROBERT F. MELLEN
 REGISTERED LAND SURVEYOR
 TUCSON, ARIZONA
 JOB# 80-141
 Z-2018-618