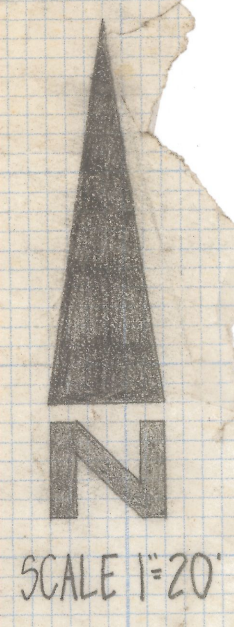
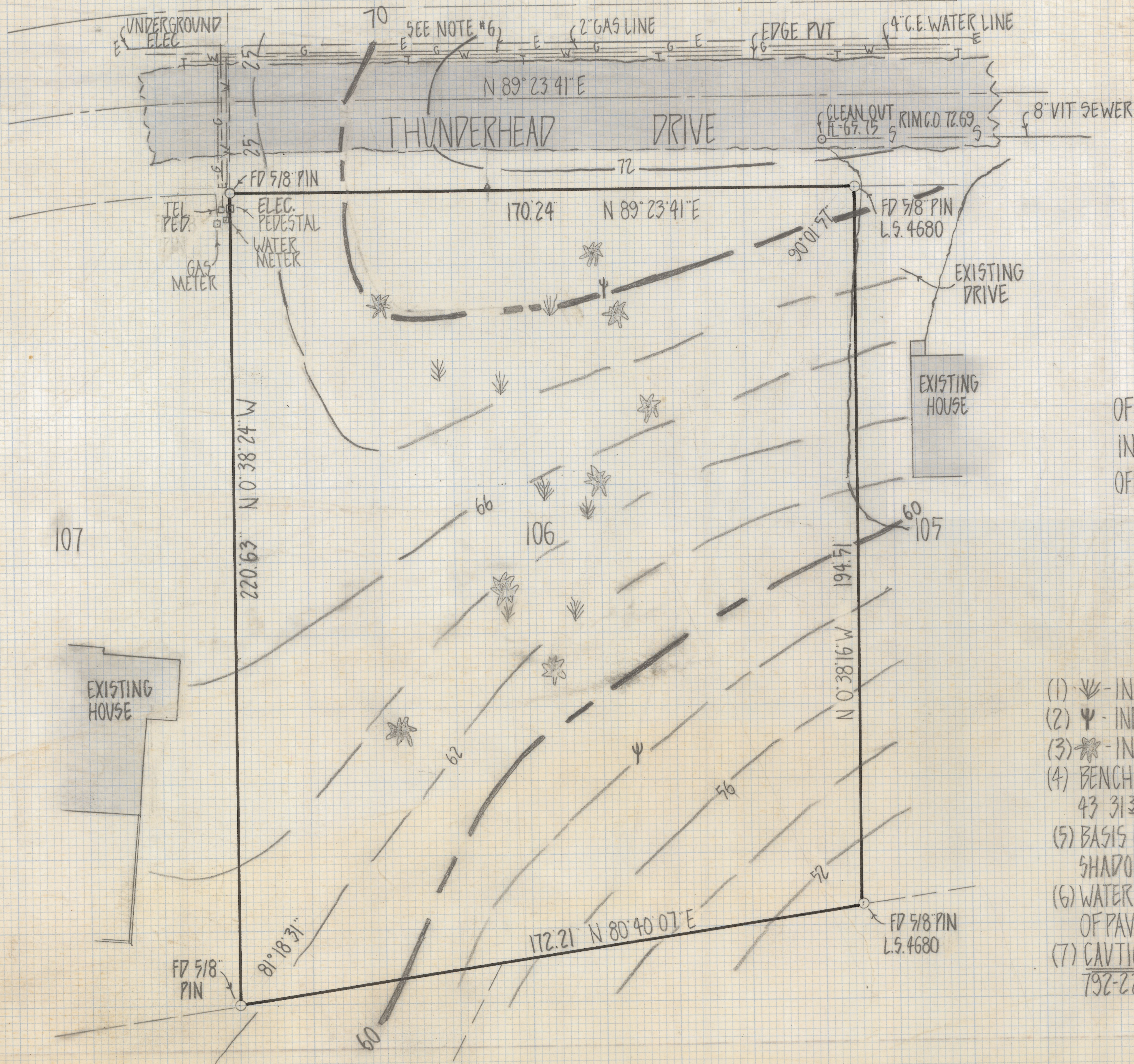


DISCLAIMER:

This unrecorded Record of Survey was donated to the City of Tucson. The City of Tucson provides this data for your personal use "as is." Additionally, the City of Tucson provides this information with the understanding that it is not guaranteed to be accurate, correct or complete and conclusions drawn from such information are the responsibility of the user.



RESULTS OF SURVEY

OF LOT 106 OF SHADOW ROCK SUBDIVISION AS RECORDED
 IN BOOK 19 OF MAPS AND PLATS AT PAGE 34 IN THE
 OFFICE OF THE PIMA COUNTY RECORDER PIMA COUNTY ARIZONA

NOTES

- (1) - INDICATES LOCATION OF OCOTILLO
- (2) - INDICATES SAGUARO CACTUS
- (3) - INDICATES MESQUITE TREE
- (4) BENCH MARK DATUM PLAN NO PIMA COUNTY WASTE WATER E. MH #
43 3135 SEWER PLAN NO 5-322 IA-17
- (5) BASIS OF BEARINGS N 89° 23' 41" E FOR THUNDERHEAD DRIVE
SHADOW ROCK SUBDIVISION 19/34 M&P
- (6) WATER GAS AND TELEPHONE ARE IN A JOINT TRENCH NORTH SIDE
OF PAVEMENT
- (7) CAUTION CALL BLUE STAKE FOR EXACT LOCATION OF UTILITIES
792-2211

M.H.# = 31.35
 DIP = 7.25
 RIM = 38.60



ROBERT F. MELLEN
 REGISTERED LAND SURVEYOR
 TUCSON, ARIZONA
 JOB # 80-148

REVISED 12/31/80

Z-2018-622