

# **DISCLAIMER:**

**This unrecorded Record of Survey was donated to the City of Tucson. The City of Tucson provides this data for your personal use "as is." Additionally, the City of Tucson provides this information with the understanding that it is not guaranteed to be accurate, correct or complete and conclusions drawn from such information are the responsibility of the user.**

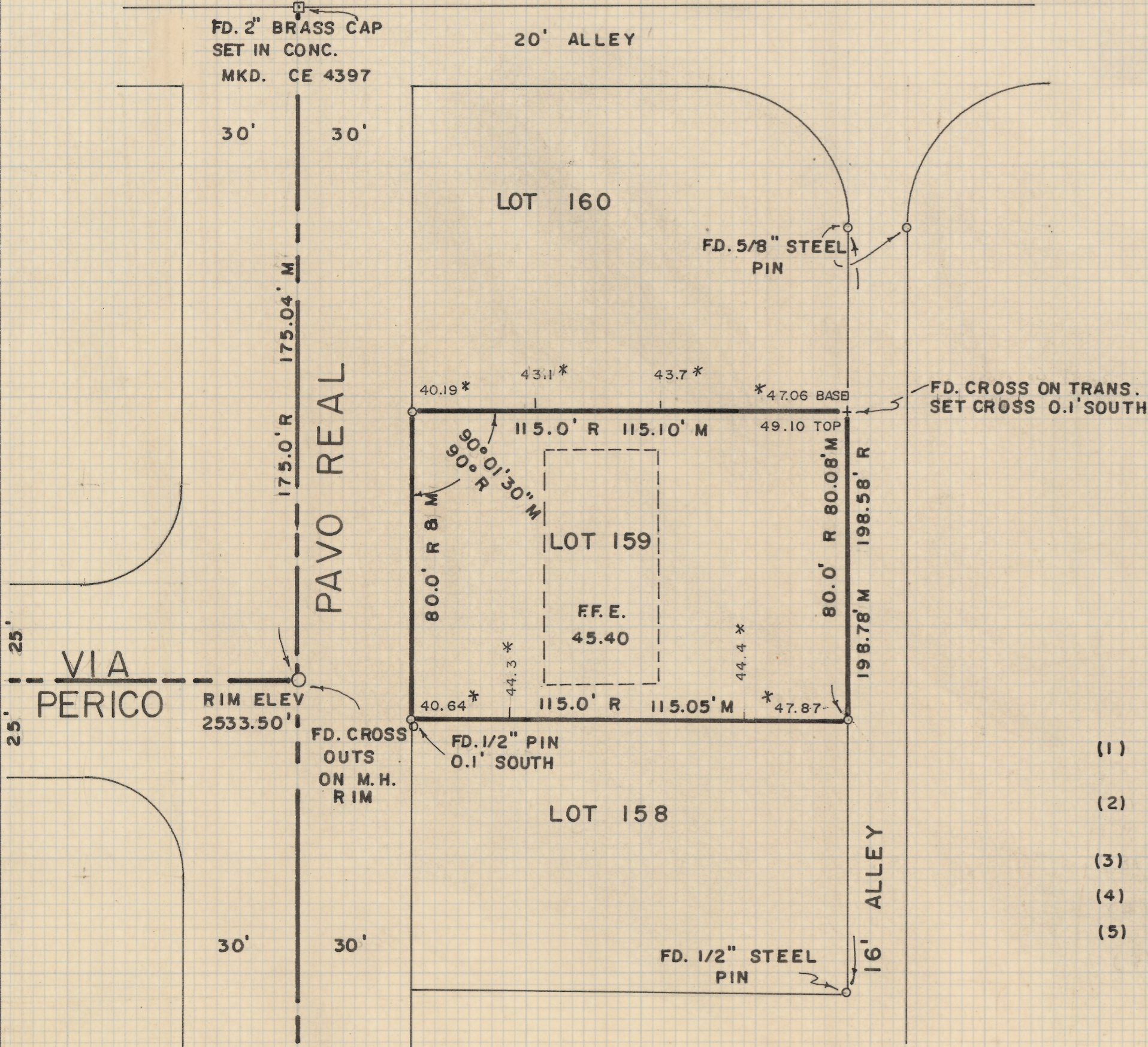
FD. 2" BRASS CAP  
SET IN CONC.  
MKD. CE 4397

20' ALLEY



N

SCALE 1" = 30'



## RESULTS OF SURVEY

OF LOT 159 OF LAS PALOMAS RE-SUBDIVISION  
(LOT 1-208) AS RECORDED IN BOOK 24 OF MAPS  
AND PLATS AT PAGE 77 IN THE OFFICE OF THE  
PIMA COUNTY RECORDER, PIMA COUNTY, ARIZONA

## NOTES

- (1) INDICATES 5/8" ALUMINUM CAP PIN SET  
MKD. L.S. 4680 UNLESS NOTED
- (2) ELEVATION BASED ON PIMA COUNTY SANITATION  
DEPT. DATUM
- (3) M - MEASURED
- (4) R - MAP RECORD
- (5) \* 45.40 INDICATES ELEVATION

ROBERT F. MELLEN  
REGISTERED LAND SURVEYOR  
TUCSON, ARIZONA

JOB # 78 - 3  
JAN. 1978

2-2019-002