

# **DISCLAIMER:**

**This unrecorded Record of Survey was donated to the City of Tucson. The City of Tucson provides this data for your personal use "as is." Additionally, the City of Tucson provides this information with the understanding that it is not guaranteed to be accurate, correct or complete and conclusions drawn from such information are the responsibility of the user.**





SCALE 1" = 40'

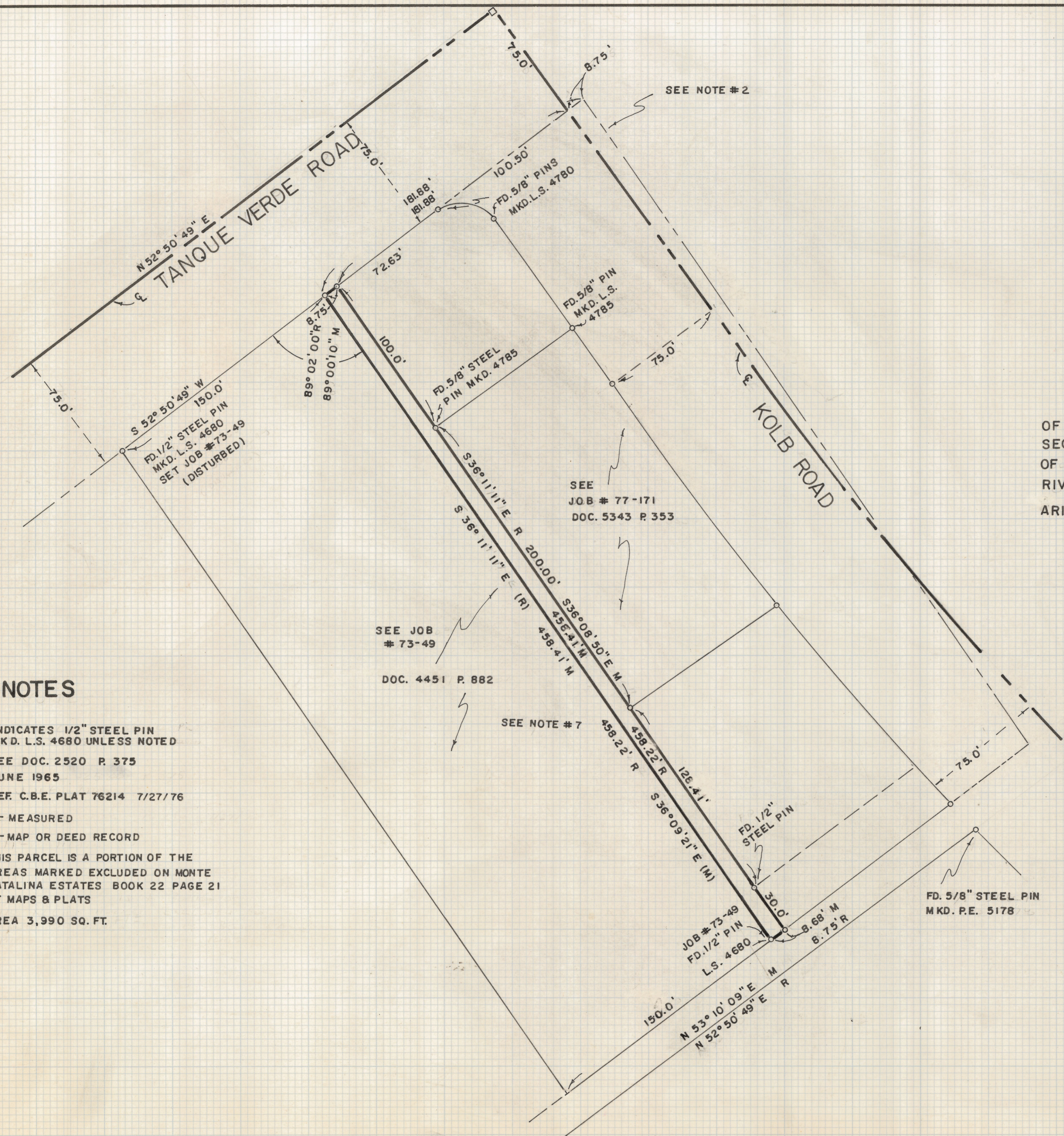
### RESULTS OF SURVEY

OF A PORTION OF THE NORTH HALF OF SECTION SIX, TOWNSHIP FOURTEEN SOUTH OF RANGE FIFTEEN EAST, GILA AND SALT RIVER BASE AND MERIDIAN, PIMA COUNTY, ARIZONA



### NOTES

- (1) INDICATES 1/2" STEEL PIN MKD. L.S. 4680 UNLESS NOTED
- (2) SEE DOC. 2520 P. 375 JUNE 1965
- (3) REF. C.B.E. PLAT 76214 7/27/76
- (4) M - MEASURED
- (5) R - MAP OR DEED RECORD
- (6) THIS PARCEL IS A PORTION OF THE AREAS MARKED EXCLUDED ON MONTE CATALINA ESTATES BOOK 22 PAGE 21 OF MAPS & PLATS
- (7) AREA 3,990 SQ. FT.



ROBERT F. MELLEN  
REGISTERED LAND SURVEYOR  
TUCSON, ARIZONA

2-2019-005

JOB # 78-8  
JAN 1978