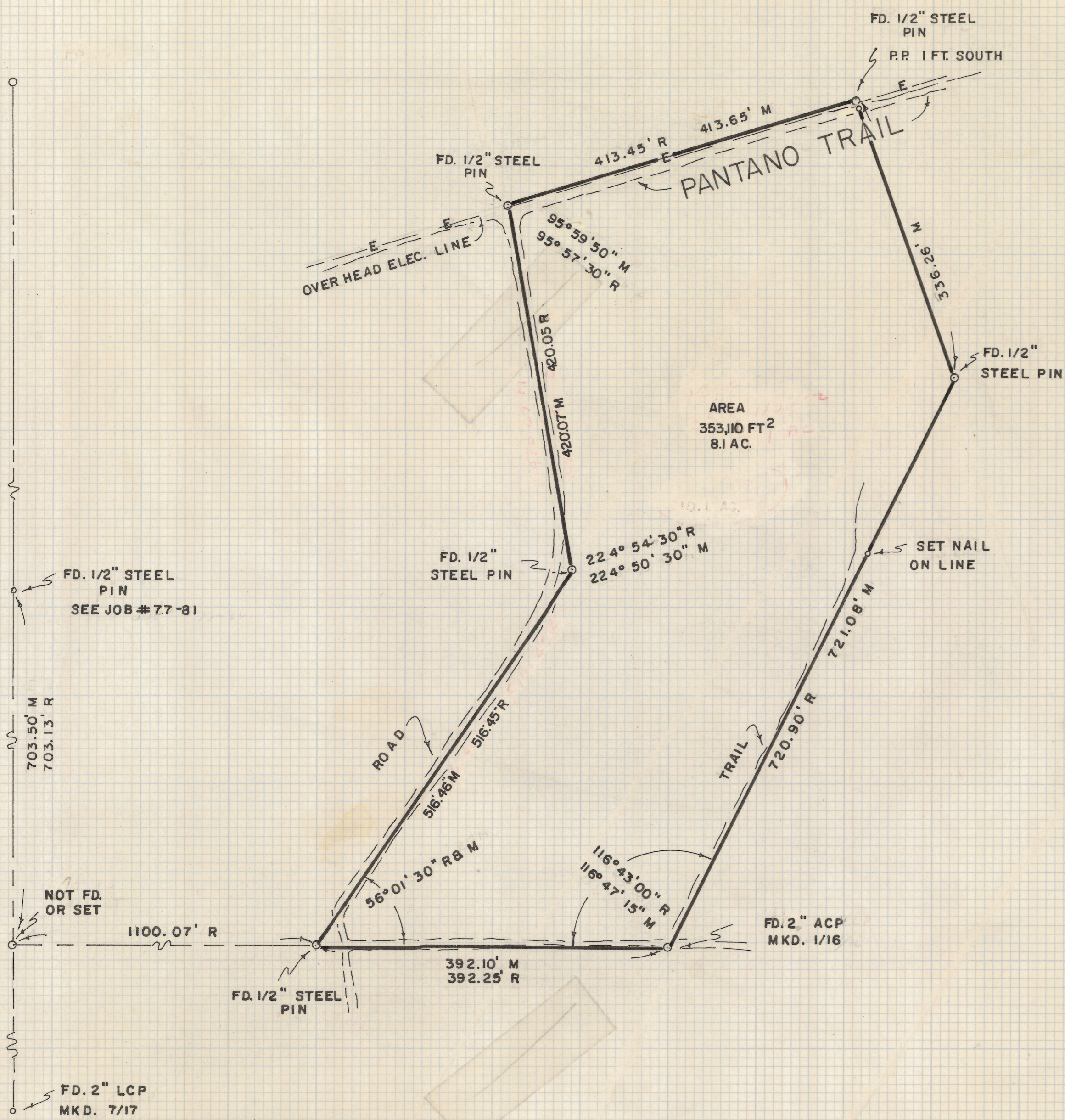


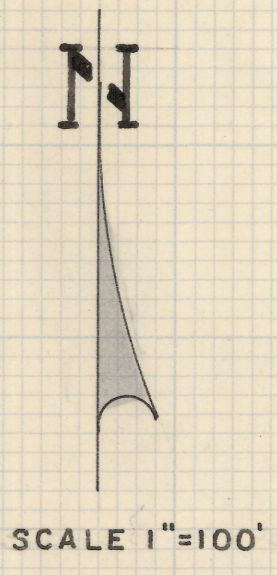
DISCLAIMER:

This unrecorded Record of Survey was donated to the City of Tucson. The City of Tucson provides this data for your personal use "as is." Additionally, the City of Tucson provides this information with the understanding that it is not guaranteed to be accurate, correct or complete and conclusions drawn from such information are the responsibility of the user.

RINCON RANCH ESTATES #1
BOOK 8 PAGE 8 M&P



AREA
353,110 FT²
8.1 AC.



RESULTS OF SURVEY

OF A PORTION OF THE SOUTHWEST QUARTER OF SECTION THIRTY, TOWNSHIP FOURTEEN SOUTH OF RANGE SIXTEEN EAST, GILA AND SALT RIVER BASE AND MERIDIAN, PIMA COUNTY, ARIZONA

NOTES

- (1) R - MAP RECORD
- (2) M - MEASURED
- (3) ACP - ALUMINUM CAP PIPE



Handwritten notes:
 RECORD
 223-0025

Z-2019-008
 ROBERT F. MELLEN
 REGISTERED LAND SURVEYOR
 TUCSON, ARIZONA