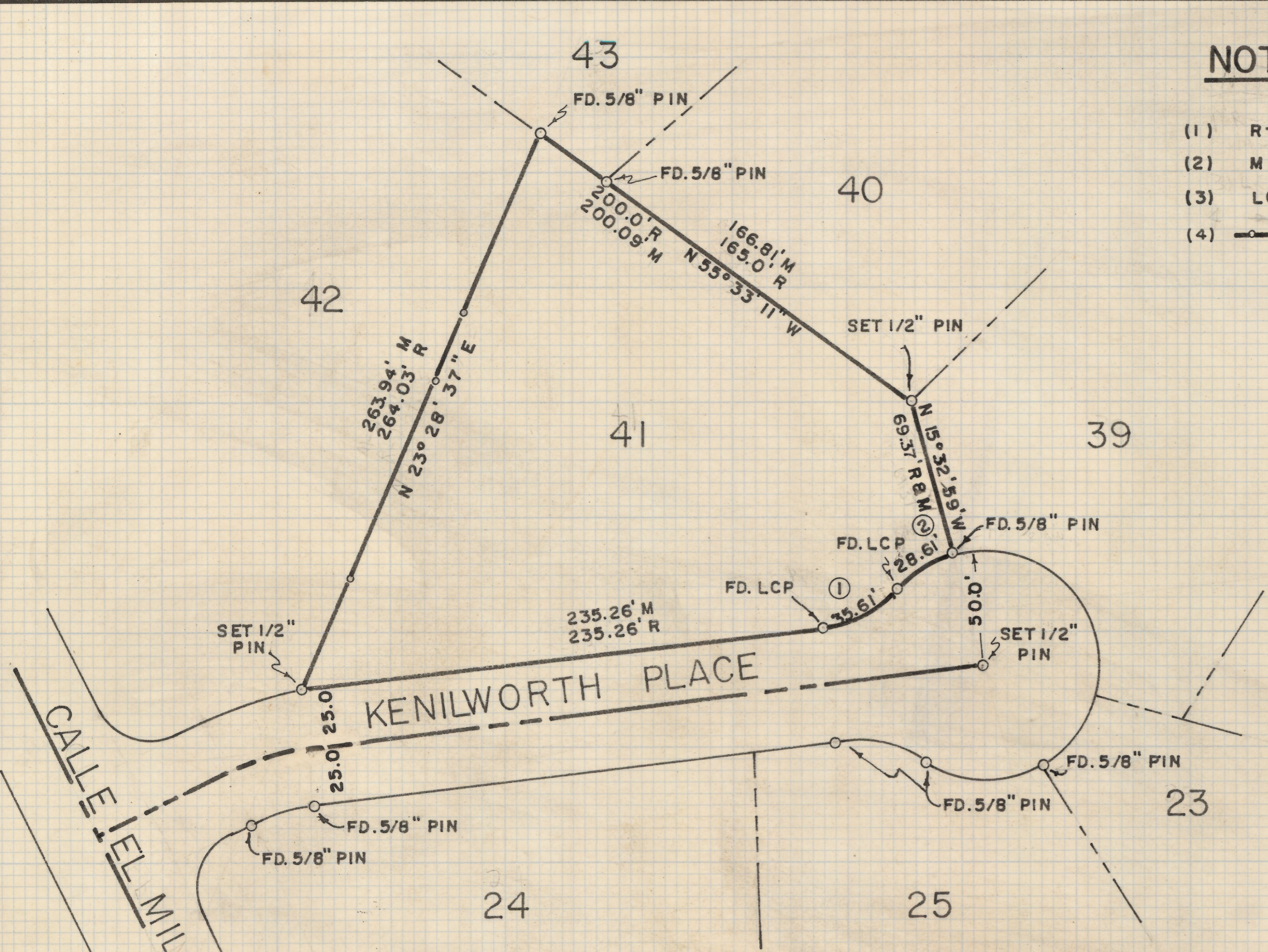


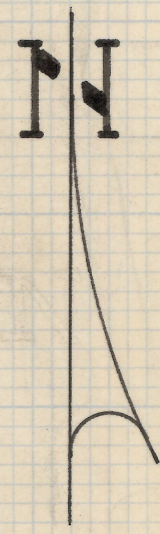
DISCLAIMER:

This unrecorded Record of Survey was donated to the City of Tucson. The City of Tucson provides this data for your personal use "as is." Additionally, the City of Tucson provides this information with the understanding that it is not guaranteed to be accurate, correct or complete and conclusions drawn from such information are the responsibility of the user.



NOTES

- (1) R - MAP RECORD
- (2) M - MEASURED
- (3) LCP - LEAD CAP PIN
- (4) INDICATES 60D NAIL SET ON LINE



SCALE 1" = 50'

RESULTS OF SURVEY

OF LOT 41 OF ORO VALLEY ESTATES AS RECORDED IN BOOK 13 OF MAPS AND PLATS AT PAGE 60 IN THE OFFICE OF THE PIMA COUNTY RECORDER, PIMA COUNTY, ARIZONA

CURVE TABLE				
NO.	DELTA	RADIUS	TANGENT	LENGTH
1	41°24'48"	50.00	18.90	35.36
2	33°15'57"	50.00	14.94	28.62



Z-2019-011

ROBERT F. MELLEN
 REGISTERED LAND SURVEYOR
 TUCSON, ARIZONA
 JOB # 78-24
 MARCH 1978