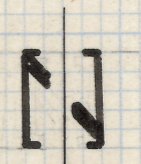
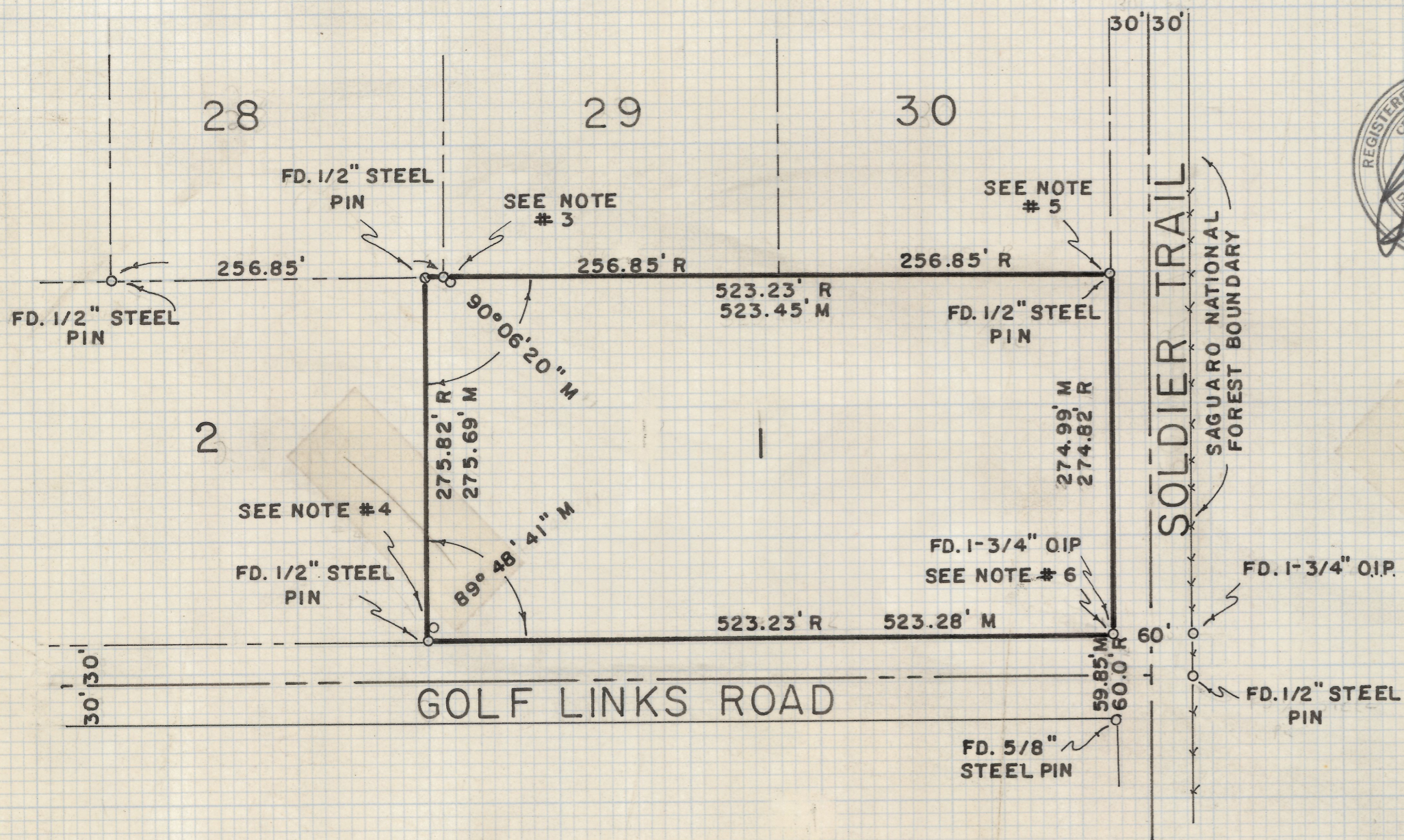


DISCLAIMER:

This unrecorded Record of Survey was donated to the City of Tucson. The City of Tucson provides this data for your personal use "as is." Additionally, the City of Tucson provides this information with the understanding that it is not guaranteed to be accurate, correct or complete and conclusions drawn from such information are the responsibility of the user.



SCALE 1" = 100'

NOTES

- (1) M - MEASURED
- (2) R - MAP RECORD
- (3) FD. 1/2" PIN 1.0' EAST & 1.0' SOUTH OF TRUE CORNER
- (4) FD. 1/2" PIN 12.72' NORTH & 0.8' EAST OF TRUE CORNER
- (5) SET 1/2" PIN ABOVE FOUND PIN. OLD PIN 24" DEEP
- (6) TRUE CORNER 0.15' NORTH

RESULTS OF SURVEY

OF LOT ONE OF OLD SPANISH TRAIL ESTATES AS RECORDED IN BOOK TEN OF MAPS AND PLATS AT PAGE NINETY-EIGHT IN THE OFFICE OF THE PIMA COUNTY RECORDER, PIMA COUNTY, ARIZONA

Z-2019-013

ROBERT F. MELLEN
 REGISTERED LAND SURVEYOR
 TUCSON, ARIZONA
 JOB # 78-30 MARCH 1978