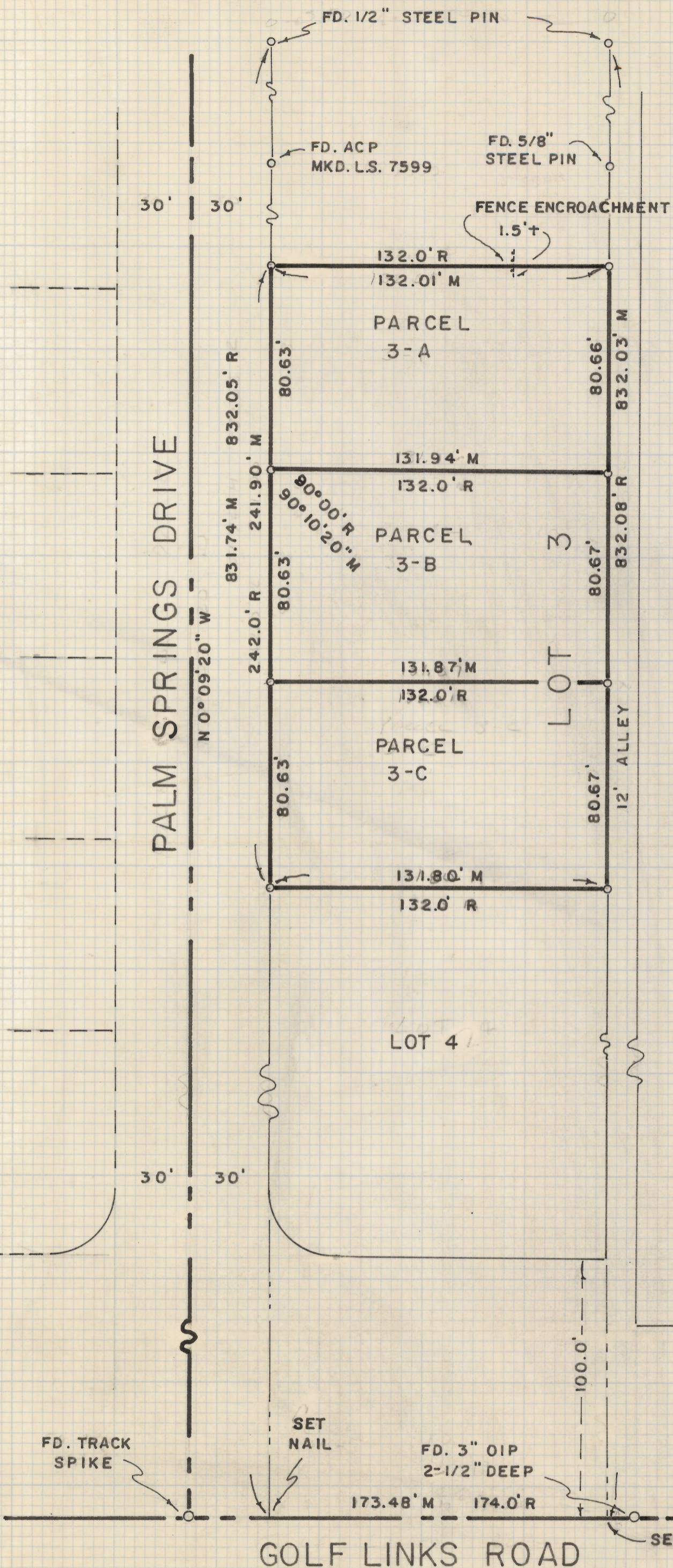


# **DISCLAIMER:**

**This unrecorded Record of Survey was donated to the City of Tucson. The City of Tucson provides this data for your personal use "as is." Additionally, the City of Tucson provides this information with the understanding that it is not guaranteed to be accurate, correct or complete and conclusions drawn from such information are the responsibility of the user.**



N

SCALE 1" = 40'

### RESULTS OF SURVEY

OF LOT THREE, BLOCK TWENTY-FIVE OF ROLLING HILLS SUB-DIVISION NO. THREE AS RECORDED IN BOOK SEVENTEEN OF MAPS AND PLATS AT PAGE ONE IN THE OFFICE OF THE PIMA COUNTY RECORDER, PIMA COUNTY, ARIZONA

### NOTES

- (1) INDICATES 1/2" STEEL PIN. SET MKD. L.S. 4680 UNLESS NOTED
- (2) R - MAP RECORDED
- (3) M - MEASURED
- (4) ACP - ALUMINIUM CAPPED PIN
- (5) OIP - OPEN IRON PIPE



2-2019-019

ROBERT F. MELLEN  
 REGISTERED LAND SURVEYOR  
 TUCSON, ARIZONA  
 JOB # 78-41  
 APRIL 1978