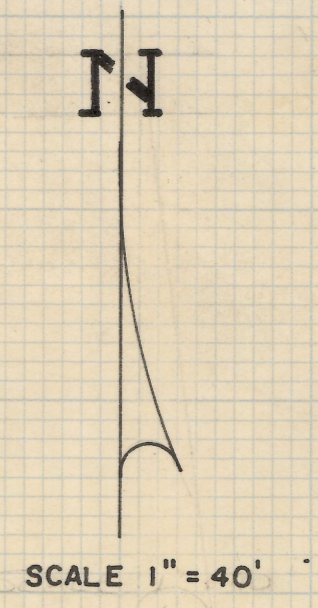
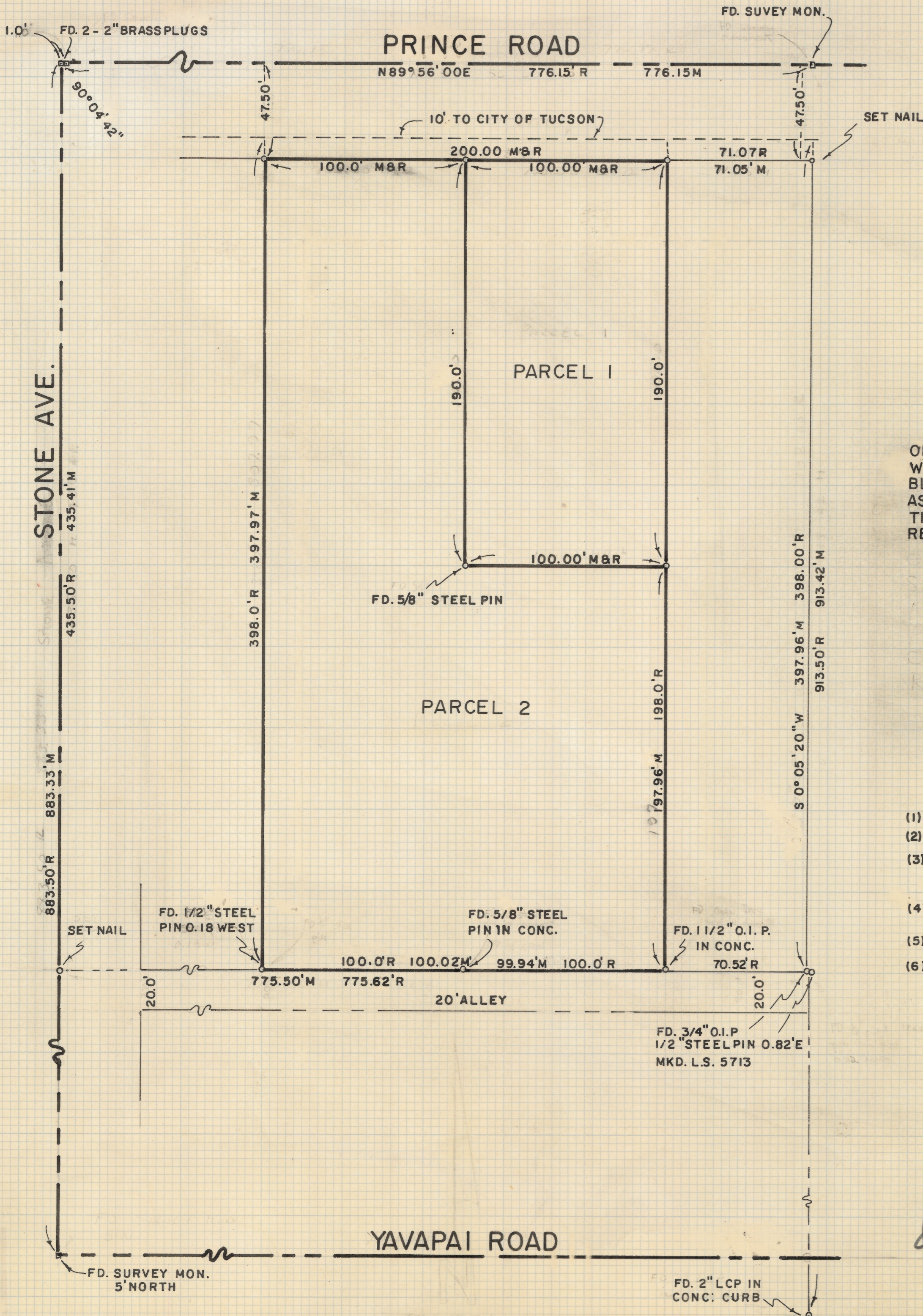


# **DISCLAIMER:**

**This unrecorded Record of Survey was donated to the City of Tucson. The City of Tucson provides this data for your personal use "as is." Additionally, the City of Tucson provides this information with the understanding that it is not guaranteed to be accurate, correct or complete and conclusions drawn from such information are the responsibility of the user.**



### RESULTS OF SURVEY

OF THE EAST TWO-HUNDRED FEET OF THE WEST FOUR-HUNDRED FEET OF LOT SEVEN, BLOCK, ONE OF SAWTELLE PLACE SUBDIVISION AS RECORDED IN BOOK FOUR AT PAGE SEVENTY-THREE IN THE OFFICE OF THE PIMA COUNTY RECORDER, PIMA COUNTY, ARIZONA

### NOTES

- (1) R - MAP RECORD
- (2) M - MEASURED
- (3) BASIS OF BEARINGS N89°56'00"E SHOWN FOR PRINCE ROAD ON SAWTELLE PLACE SUBDIVISION RECORDED IN BOOK 4 PAGE 73 OF MAPS AND PLATS.
- (4) INDICATES 1/2" STEEL PIN SET MKD. L.S. 4680 UNLESS NOTED.
- (5) O.I.P. - OPEN IRON PIPE
- (6) L.C.P. - LEAD CAP PIPE



Z-2019-020

ROBERT F. MELLEN  
 REGISTERED LAND SURVEYOR  
 TUCSON, ARIZONA  
 JOB 78- 45  
 MAY 1978