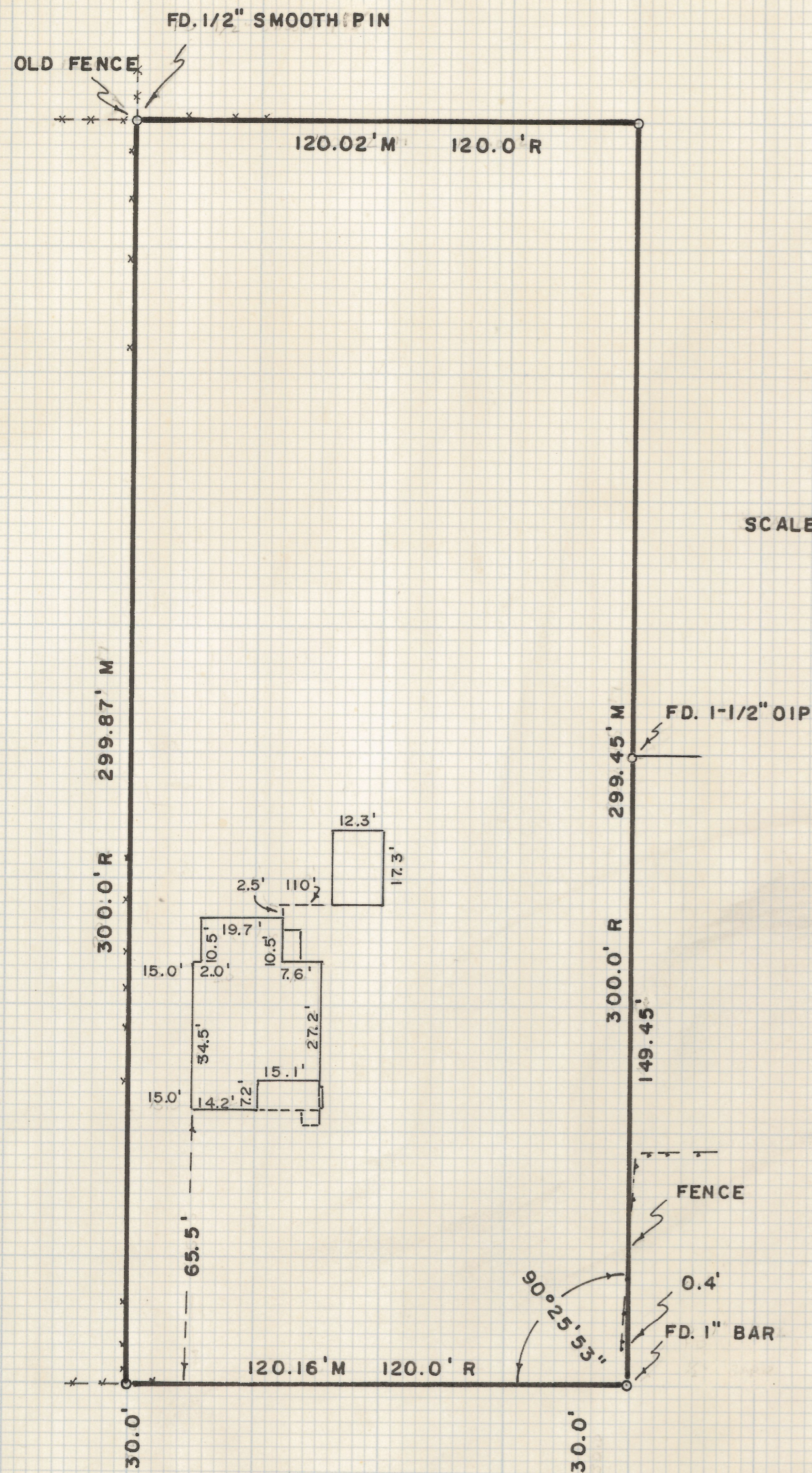


DISCLAIMER:

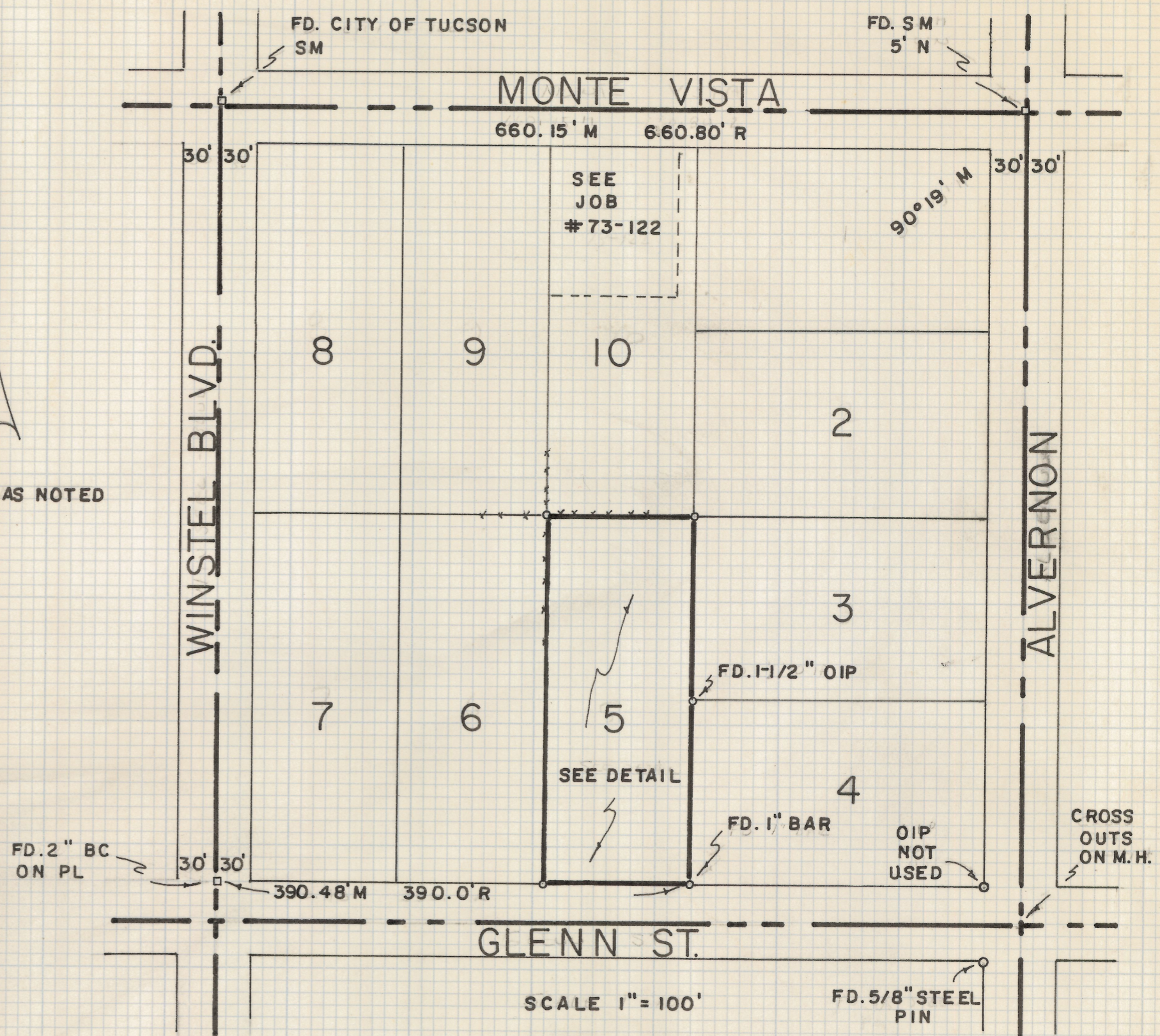
This unrecorded Record of Survey was donated to the City of Tucson. The City of Tucson provides this data for your personal use "as is." Additionally, the City of Tucson provides this information with the understanding that it is not guaranteed to be accurate, correct or complete and conclusions drawn from such information are the responsibility of the user.



SCALE 1" = 30'

NOTES

- (1) INDICATES 1/2" STEEL PIN SET MKD. L.S. 4680 UNLESS NOTED
- (2) S.M.- CITY OF TUCSON SURVEY MON.
- (3) M-MEASURED
- (4) R-MAP RECORD



SCALE 1" = 100'

RESULTS OF SURVEY

OF LOT FIVE OF BLOCK EIGHT OF LINCOLN PARK SUBDIVISION AS RECORDED IN BOOK FIVE AT PAGE TWENTY-NINE OF MAPS AND PLATS IN THE OFFICE OF THE PIMA COUNTY RECORDER, PIMA COUNTY, ARIZONA



2-2019-023

ROBERT F. MELLEN
 REGISTERED LAND SURVEYOR
 TUCSON, ARIZONA
 JOB # 78-51
 MAY 1978