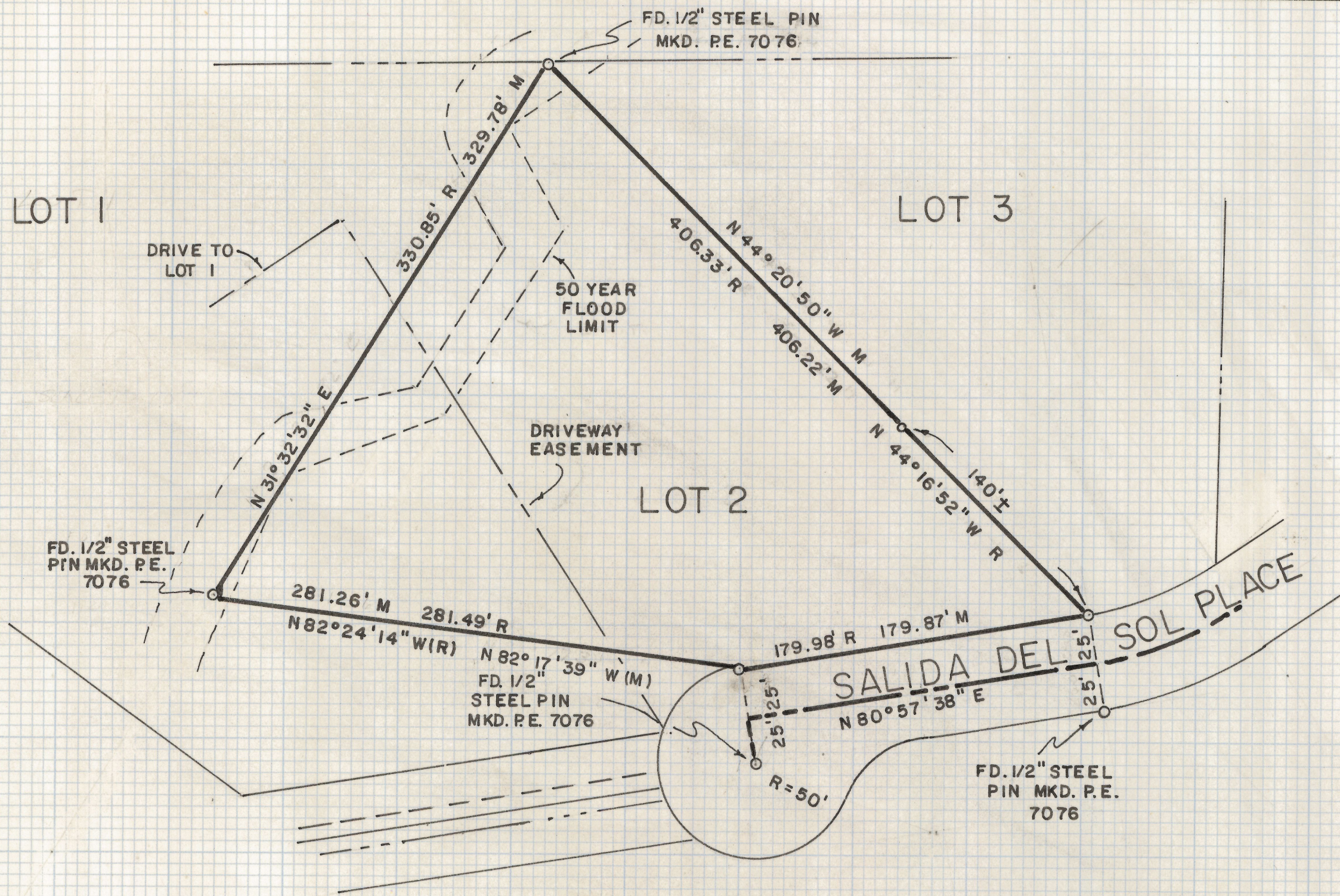


# **DISCLAIMER:**

**This unrecorded Record of Survey was donated to the City of Tucson. The City of Tucson provides this data for your personal use "as is." Additionally, the City of Tucson provides this information with the understanding that it is not guaranteed to be accurate, correct or complete and conclusions drawn from such information are the responsibility of the user.**





NOTES

(1) 5/8" STEEL PIN SET MKD. L.S. 4680 UNLESS NOTED

(2) M - MEASURED

(3) R - MAP RECORD

**NOTES**

- (1) INDICATES 5/8" STEEL PIN SET MKD. L.S. 4680 UNLESS NOTED
- (2) M - MEASURED
- (3) R - MAP RECORD

**RESULTS OF SURVEY**

OF LOT TWO, VISTA DEL CIELO SUBDIVISION (LOTS 1 THRU 22) AS RECORDED IN BOOK TWENTY-TWO OF MAPS AND PLATS AT PAGE EIGHTY IN THE OFFICE OF THE PIMA COUNTY RECORDER, PIMA COUNTY, ARIZONA



**2-2019-024**  
**ROBERT F. MELLEN**  
 REGISTERED LAND SURVEYOR  
 TUCSON, ARIZONA  
 JOB # 78-52  
 MAY 1978

CLEARPRINT