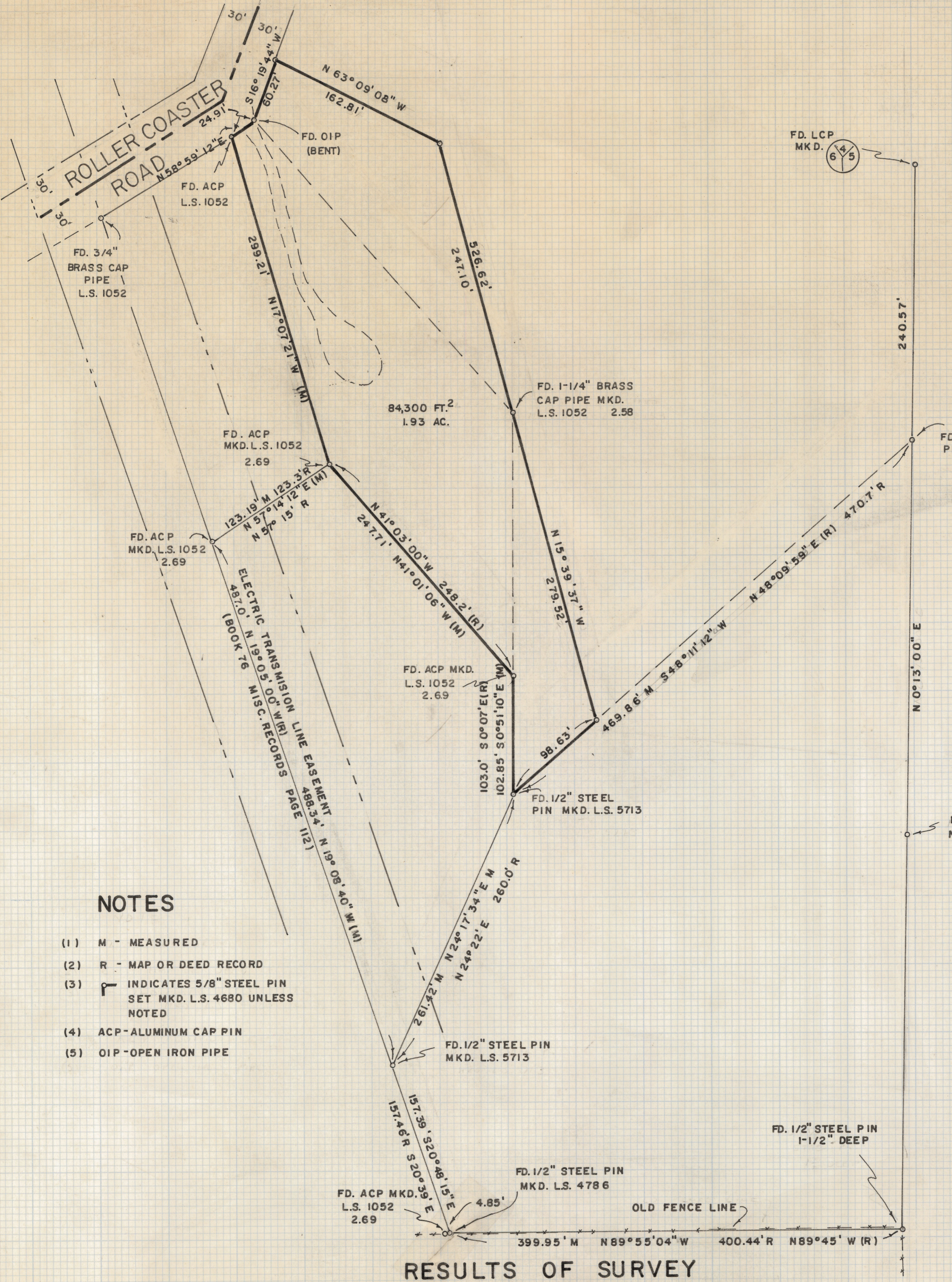


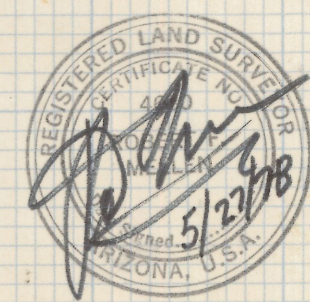
# **DISCLAIMER:**

**This unrecorded Record of Survey was donated to the City of Tucson. The City of Tucson provides this data for your personal use "as is." Additionally, the City of Tucson provides this information with the understanding that it is not guaranteed to be accurate, correct or complete and conclusions drawn from such information are the responsibility of the user.**





SCALE 1" = 60'



**NOTES**

- (1) M - MEASURED
- (2) R - MAP OR DEED RECORD
- (3) INDICATES 5/8" STEEL PIN SET MKD. L.S. 4680 UNLESS NOTED
- (4) ACP - ALUMINUM CAP PIN
- (5) OIP - OPEN IRON PIPE

**RESULTS OF SURVEY**

OF A PORTION OF THE SOUTHEAST QUARTER OF THE NORTHWEST QUARTER OF SECTION FOURTEEN, TOWNSHIP THIRTEEN SOUTH OF RANGE THIRTEEN EAST OF THE GILA AND SALT RIVER BASE AND MERIDIAN, PIMA COUNTY, ARIZONA

**Z-2019-025**  
 ROBERT F. MELLEN  
 REGISTERED LAND SURVEYOR  
 TUCSON, ARIZONA  
 JOB #78-53  
 MAY 1978