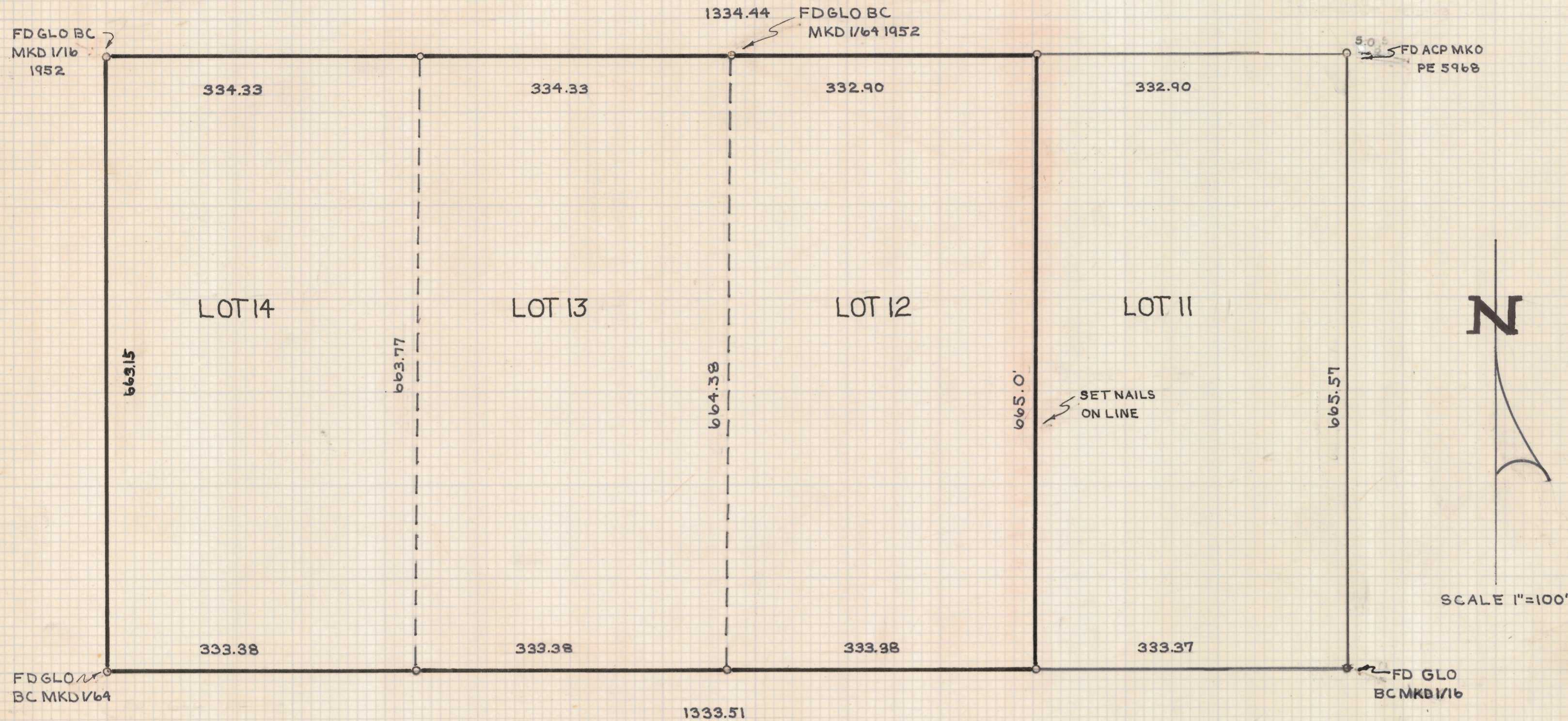


DISCLAIMER:

This unrecorded Record of Survey was donated to the City of Tucson. The City of Tucson provides this data for your personal use "as is." Additionally, the City of Tucson provides this information with the understanding that it is not guaranteed to be accurate, correct or complete and conclusions drawn from such information are the responsibility of the user.



NOTES

- (1) 5/8" STEEL PIN SET MKD. L.S. 4680 UNLESS NOTED
- (2) R-MAP RECORD
- (3) M-MEASURED

RESULTS OF SURVEY

OF LOTS TWELVE, THIRTEEN AND FOURTEEN OF SECTION SEVEN, TOWNSHIP FIFTEEN SOUTH OF RANGE THIRTEEN EAST GILA AND SALT RIVER BASE AND MERIDIAN, PIMA COUNTY, ARIZONA.



Z-2019-028

ROBERT F. MELLEN
 REGISTERED LAND SURVEYOR
 TUCSON ARIZONA
 JOB# 78-61
 JUNE 78