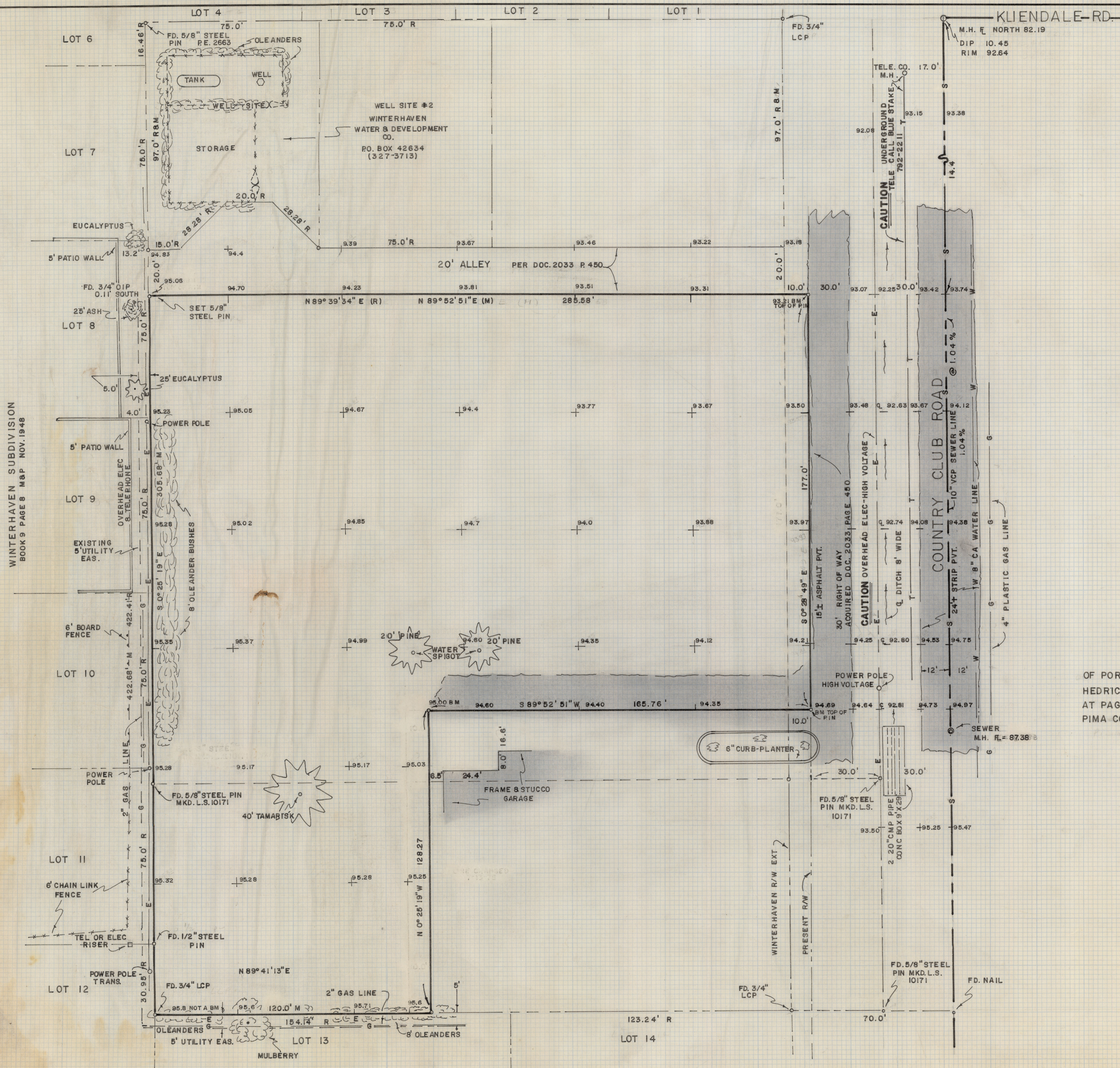


DISCLAIMER:

This unrecorded Record of Survey was donated to the City of Tucson. The City of Tucson provides this data for your personal use "as is." Additionally, the City of Tucson provides this information with the understanding that it is not guaranteed to be accurate, correct or complete and conclusions drawn from such information are the responsibility of the user.



WINTERHAVEN SUBDIVISION
BOOK 9 PAGES 8 M&P NOV. 1948

NOTES

- (1) BASIS OF BEARINGS - EAST LINE LOTS 6 - 12 WINTERHAVEN SUB. (S 0° 25' 19" E)
- (2) ϕ INDICATES 5/8" STEEL PIN SET MKD. L.S. 4680 UNLESS NOTED
- (3) M - MEASURED
- (4) R - MAP OR DEED RECORD
- (5) UNDERGROUND UTILITIES FROM EXISTING MAPS NOT VERIFIED
- (6) BENCH MARK DATUM PIMA COUNTY WASTE WATER MANAGEMENT PER PLAN G-223 SHEET 13/13
- (7) LCP - LEAD CAP PIPE

RESULTS OF SURVEY

OF PORTIONS OF LOTS NINE AND TWELVE OF BLOCK "A" HEDRICK ACREAGE NO. ONE AS RECORDED IN BOOK THREE AT PAGE ONE HUNDRED AND EIGHT IN THE OFFICE OF THE PIMA COUNTY RECORDER, PIMA COUNTY, ARIZONA



2-2019-037

ROBERT F. MELLEN
REGISTERED LAND SURVEYOR
TUCSON, ARIZONA
JOB # 78 - 78
JULY 1978