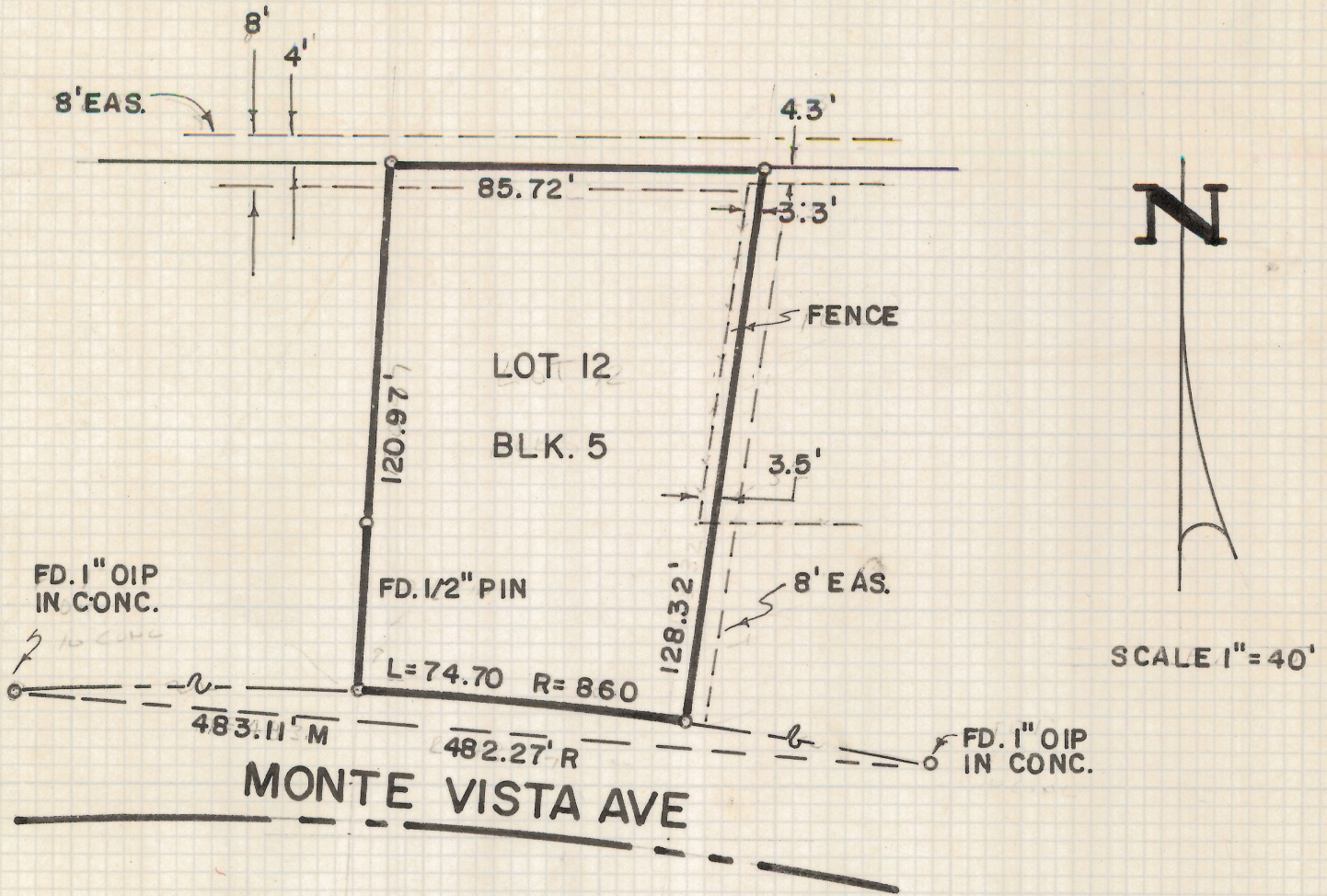


DISCLAIMER:

This unrecorded Record of Survey was donated to the City of Tucson. The City of Tucson provides this data for your personal use "as is." Additionally, the City of Tucson provides this information with the understanding that it is not guaranteed to be accurate, correct or complete and conclusions drawn from such information are the responsibility of the user.

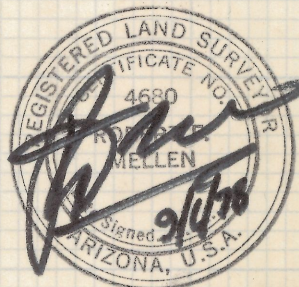


RESULTS OF SURVEY

OF LOT TWELVE, BLOCK FIVE OF SAN GABRIEL
 SUBDIVISION AS RECORDED IN BOOK SIX OF
 MAPS AND PLATS AT PAGE NINETY-EIGHT
 IN THE OFFICE OF THE PIMA COUNTY RECORDER,
 PIMA COUNTY, ARIZONA

NOTES

- (1) ♀ INDICATES 5/8" STEEL
 PIN SET MKD. L.S. 4680
 UNLESS NOTED



Z-2019-044

ROBERT F. MELLEN
 REGISTERED LAND SURVEYOR
 TUCSON, ARIZONA
 JOB # 78-94
 SEPT. 1978