

# **DISCLAIMER:**

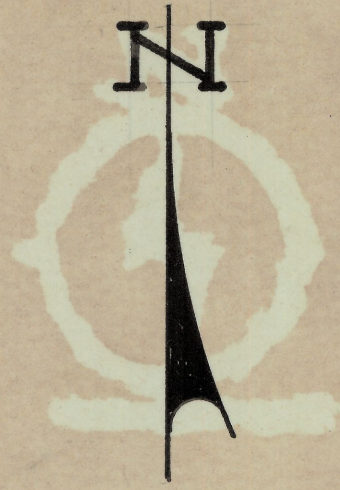
**This unrecorded Record of Survey was donated to the City of Tucson. The City of Tucson provides this data for your personal use "as is." Additionally, the City of Tucson provides this information with the understanding that it is not guaranteed to be accurate, correct or complete and conclusions drawn from such information are the responsibility of the user.**



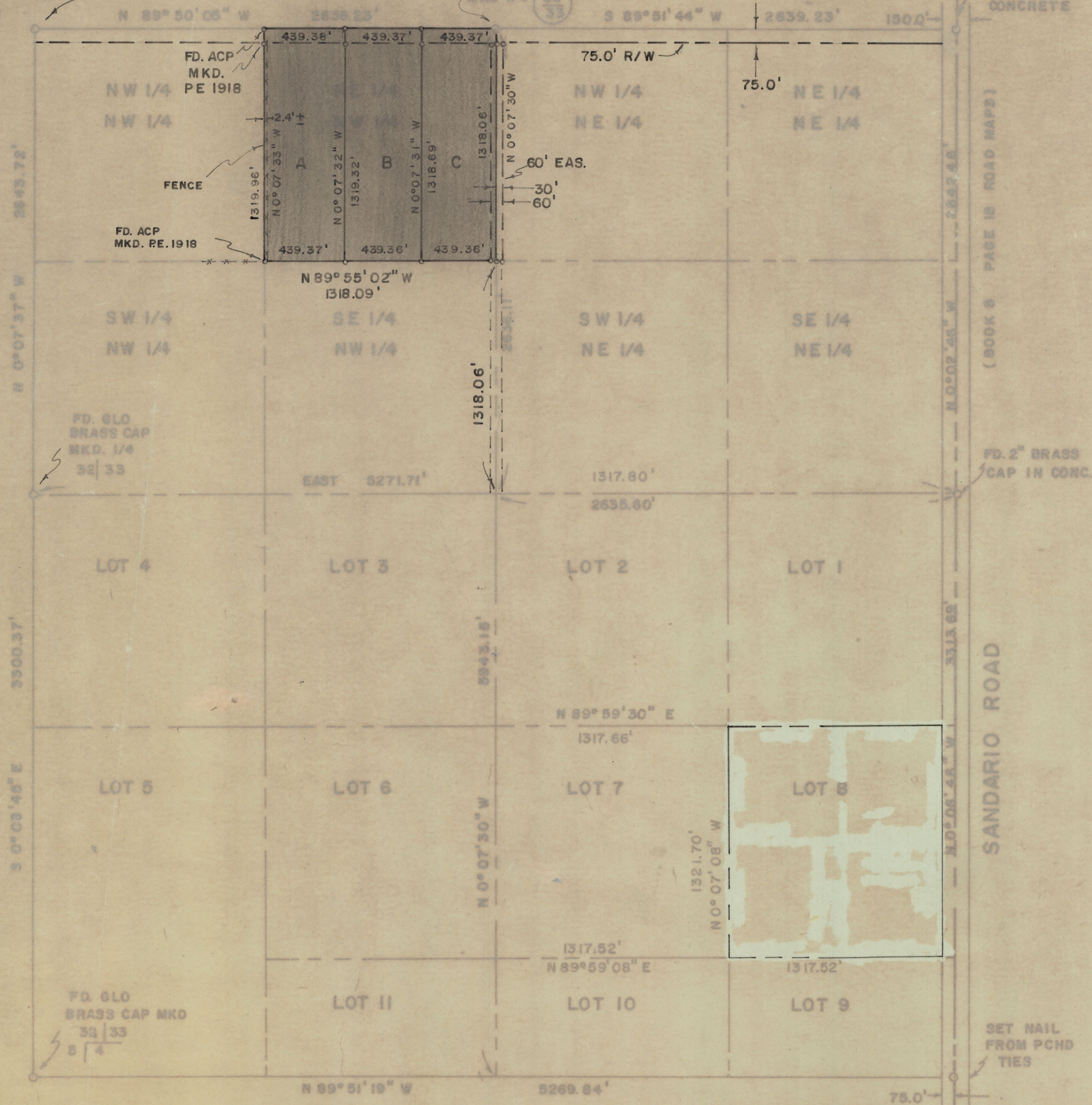
FD. 6LO  
BRASS CAP  
MKD.

FD. 6LO  
BRASS CAP  
MKD. 1/4

FD. 2" BRASS  
CAP SET IN  
CONCRETE



SCALE 1"=500'

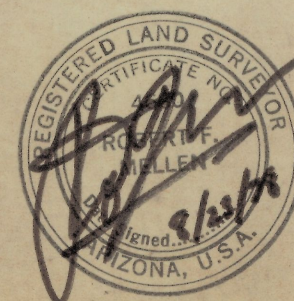


### RESULTS OF SURVEY

#### NOTES

- (1) INDICATES 5/8" STEEL PIN MKS. L.S. 4280 SET UNLESS NOTED
- (2) L.C.P. - LEAD CAP PIPE
- (3) INDICATES NAIL SET
- (4) SEE JOB # 73-99

OF THE NORTHEAST QUARTER OF THE NORTHWEST QUARTER OF SECTION 33, TOWNSHIP 12 SOUTH OF RANGE II EAST, GILA AND SALT RIVER BASE AND MERIDIAN, PIMA COUNTY, ARIZONA



**Z-2019-054**  
 ROBERT F. MELLEN  
 REGISTERED LAND SURVEYOR  
 TUCSON, ARIZONA