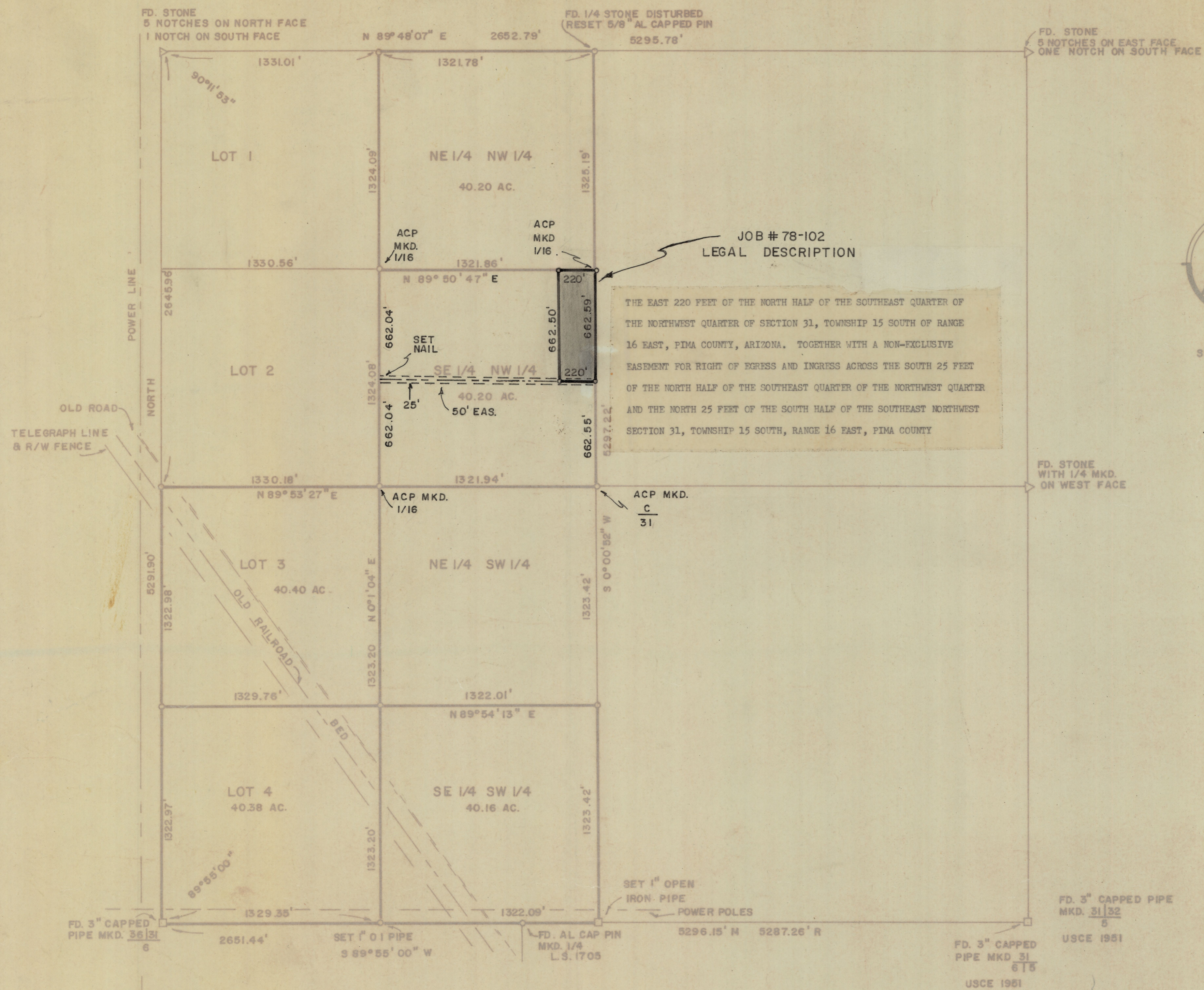


DISCLAIMER:

This unrecorded Record of Survey was donated to the City of Tucson. The City of Tucson provides this data for your personal use "as is." Additionally, the City of Tucson provides this information with the understanding that it is not guaranteed to be accurate, correct or complete and conclusions drawn from such information are the responsibility of the user.



SCALE 1" = 400'



RESULTS OF SURVEY OF

LOTS 3 AND 4, THE EAST ONE HALF OF THE NORTHWEST QUARTER AND THE SOUTHEAST QUARTER OF THE SOUTHWEST QUARTER OF SECTION 31, TOWNSHIP 15 SOUTH, RANGE 16 EAST, GILA AND SALT RIVER BASE AND MERIDIAN, PIMA COUNTY, ARIZONA

ROBERT F. NELLEN
REGISTERED LAND SURVEYOR
TUCSON, ARIZONA

INDICATES 5/8" STEEL PIN WITH AL CAP MARKED L.S. 4680 SET UNLESS OTHERWISE NOTED
R = G.L.O. RECORD PLAT DISTANCE
M = MEASURED
INDICATES 5/8" STEEL PIN SET MKD. L.S. 4680 JOB # 78-102

2-2019-056
REVISED SEPT. 1978 TO SHOW JOB # 78-102