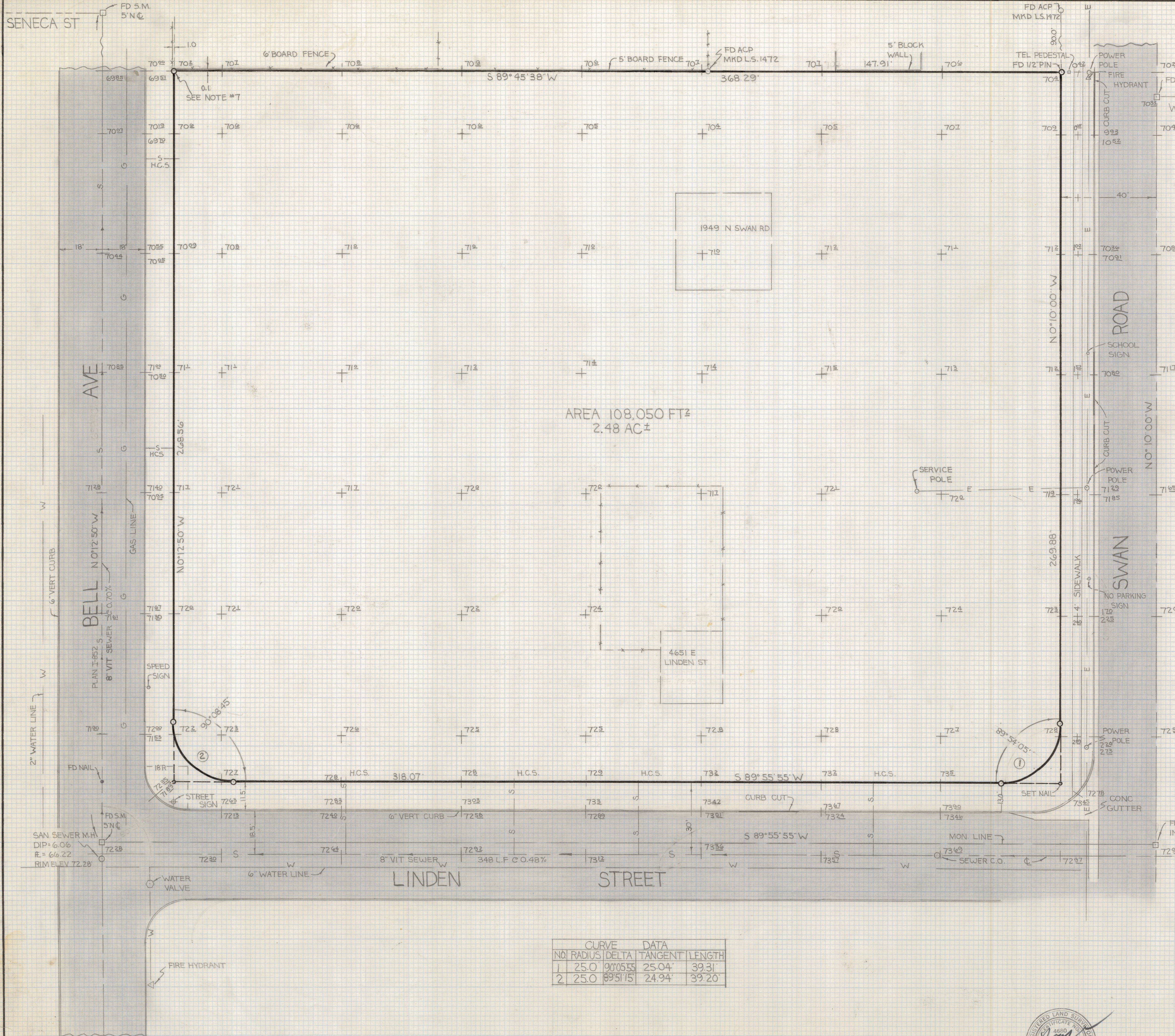


DISCLAIMER:

This unrecorded Record of Survey was donated to the City of Tucson. The City of Tucson provides this data for your personal use "as is." Additionally, the City of Tucson provides this information with the understanding that it is not guaranteed to be accurate, correct or complete and conclusions drawn from such information are the responsibility of the user.



AREA 108,050 FT²
2.48 AC±

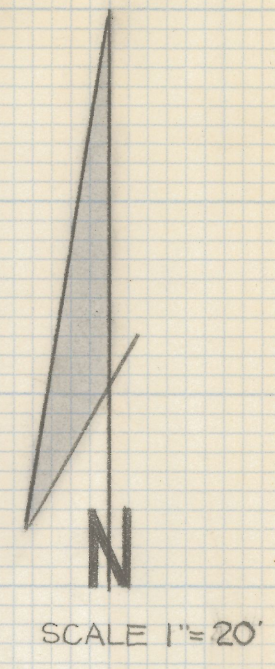
CURVE DATA			
NO	RADIUS	DELTA	TANGENT LENGTH
1	25.0	90°05'55"	25.04'
2	25.0	89°51'15"	24.94'

RESULTS OF SURVEY

A PORTION OF THE NORTH HALF OF THE SOUTHEAST QUARTER OF THE NORTHEAST QUARTER, OF SECTION THREE, TOWNSHIP FOURTEEN SOUTH OF RANGE FOURTEEN EAST, GILA AND SALT RIVER BASE AND MERIDIAN PIMA COUNTY ARIZONA

NOTES

- 1) BASIS OF BEARINGS N 0° 10' W PIMA ADDITION BOOK 7 PAGE 57 M&P
- 2) ♂ INDICATES 1/2" STEEL PIN SET MKD L S 4680 UNLESS NOTED
- 3) EXISTING UNDERGROUND UTILITIES FROM EXISTING PLANS NOT VERIFIED I-852 -G-227 -I-73-38
- 4) THERE ARE TREES ON THIS PROPERTY WHICH HAVE NOT BEEN LOCATED
- 5) CAUTION UNDERGROUND UTILITIES IN THE AREA CALL BLUE STAKE BEFORE DIGGING OR DESIGNING IMPROVEMENTS IN POSSIBLE CONFLICT 792-2211
- 6) BENCH MARK DATUM CITY OF TUCSON PLAN I-852 #E.M.H.#13 66.22
- 7) DUE TO A CONFLICT IN MONUMENTATION THIS CORNER TRUE POSITION MAY BE 1.35± NORTH OCCUPATION FITS CORNER SET



Z-2019-058

ROBERT F. MELLEN
REGISTERED LAND SURVEYOR
TUCSON, ARIZONA
JOB# 78-105