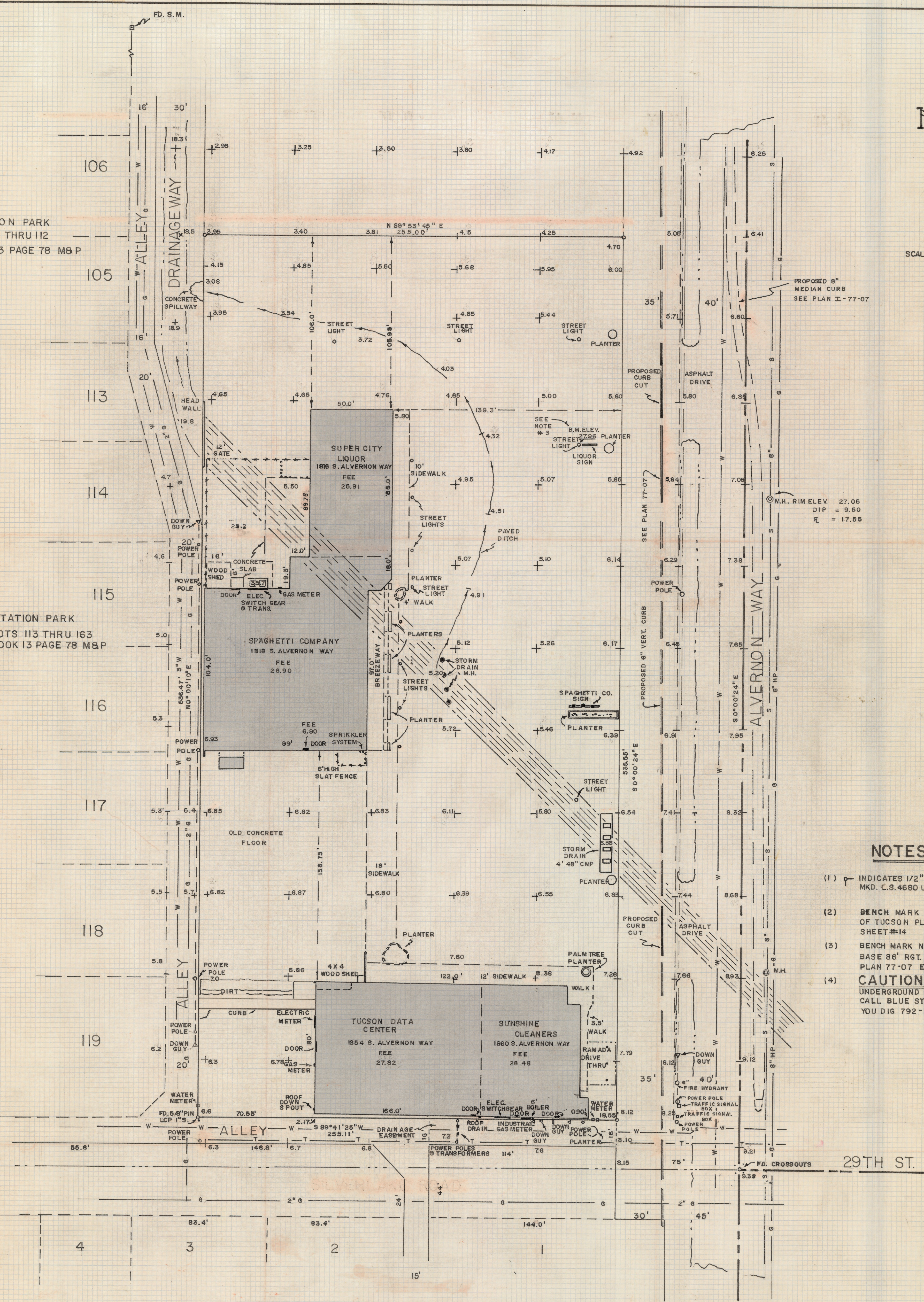


# **DISCLAIMER:**

**This unrecorded Record of Survey was donated to the City of Tucson. The City of Tucson provides this data for your personal use "as is." Additionally, the City of Tucson provides this information with the understanding that it is not guaranteed to be accurate, correct or complete and conclusions drawn from such information are the responsibility of the user.**

CITATION PARK  
LOTS 1 THRU 112  
BOOK 13 PAGE 78 M&P

CITATION PARK  
LOTS 113 THRU 163  
BOOK 13 PAGE 78 M&P

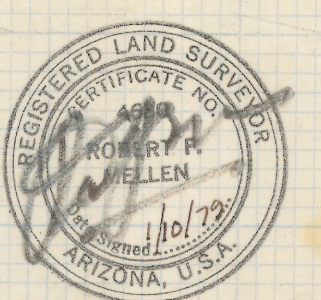


**NOTES**

- (1) INDICATES 1/2" STEEL PIN MKD. C.S. 4680 UNLESS NOTED
- (2) BENCH MARK DATUM - CITY OF TUCSON PLAN I-77-07 SHEET #14
- (3) BENCH MARK N.E. COR. OF LIGHT BASE 86' RGT. OF STA. 74+75 PLAN 77-07 ELEV. 2527.96
- (4) **CAUTION**  
UNDERGROUND UTILITIES CALL BLUE STAKE BEFORE YOU DIG 792-2211

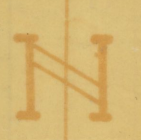
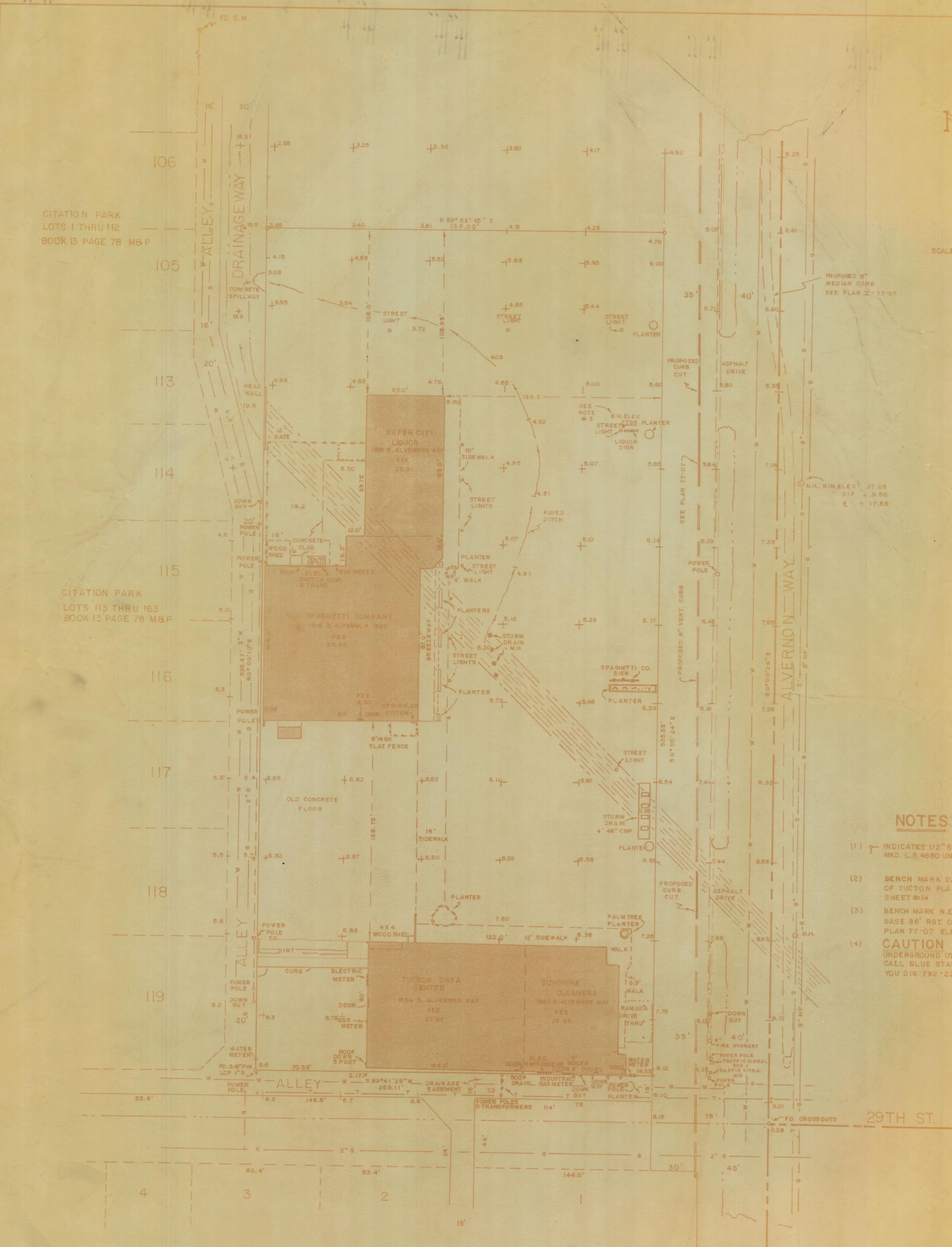
**RESULTS OF SURVEY**

OF THE WEST 255 FEET OF THE EAST 330.0 FEET OF THE SOUTH HALF OF THE NORTHEAST QUARTER OF SECTION TWENTY-ONE, TOWNSHIP FOURTEEN SOUTH OF RANGE FOURTEEN EAST, EXCEPT THE NORTH 750 FEET AND THE SOUTH 30 FEET, GILA AND SALT RIVER BASE AND MERIDIAN, PIMA COUNTY, ARIZONA



ROBERT F. MELLEN  
REGISTERED LAND SURVEYOR  
TUCSON, ARIZONA  
JOB # 78-142  
DEC. 1978

Z-2019-063-001



SCALE 1"=30'

**NOTES**

- (1) INDICATES 1/2" STEEL PIN MKD. L.S. 4680 UNLESS NOTED
- (2) BENCH MARK DATUM - CITY OF TUCSON PLAN I-77-07 SHEET #14
- (3) BENCH MARK N.E. COR. OF LIGHT BASE 86' RGT. OF STA. 74+75 PLAN 77-07 ELEV. 2527.96
- (4) **CAUTION**  
UNDERGROUND UTILITIES CALL BLUE STAKE BEFORE YOU DIG 792-2211

**RESULTS OF SURVEY**

OF THE WEST 255 FEET OF THE EAST 330.0 FEET OF THE SOUTH HALF OF THE NORTHEAST QUARTER OF SECTION TWENTY-ONE, TOWNSHIP FOURTEEN SOUTH OF RANGE FOURTEEN EAST, EXCEPT THE NORTH 750 FEET AND THE SOUTH 30 FEET, GILA AND SALT RIVER BASE AND MERIDIAN, PIMA COUNTY, ARIZONA

ROBERT F. ...  
REGISTERED LAND ...  
TUCSON, ARIZONA ...  
NOV 1997