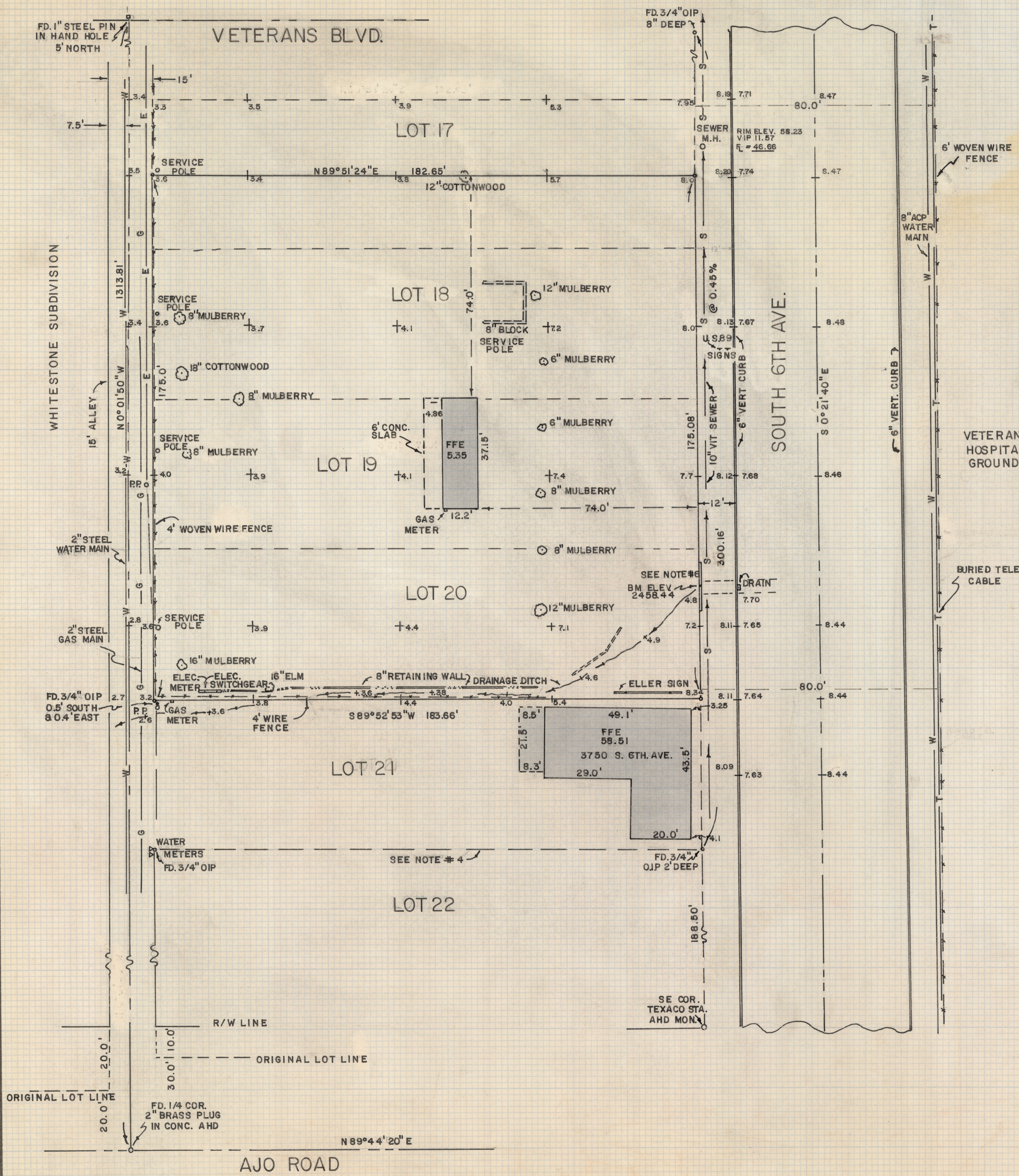


# **DISCLAIMER:**

**This unrecorded Record of Survey was donated to the City of Tucson. The City of Tucson provides this data for your personal use "as is." Additionally, the City of Tucson provides this information with the understanding that it is not guaranteed to be accurate, correct or complete and conclusions drawn from such information are the responsibility of the user.**



SCALE 1" = 20'

**NOTES**

- (1) INDICATES 1/2" STEEL PIN MARKED L.S. 4680 SET UNLESS NOTED
- (2) BASIS OF BEARINGS - ARIZONA HIGHWAY DEPT. RIGHT OF WAY MAP SHOWING AJO ROAD A.S. N89°44'20"E
- (3) **CAUTION**  
UNDERGROUND UTILITIES IN AREA CALL BLUE STAKES BEFORE DIGGING 792-2211
- (4) SEE SEPARATE LETTER ON BLOCK SHORTAGE
- (5) SEWER FROM PLAN G-107 CITY OF TUCSON SHEET 10F5 ADD 9.89 FOR ARIZONA HIGHWAY DEPT. DATUM
- (6) BENCH MARK 3" BRASS PLUG IN HEADWALL STATION 88+97.3 BM ELEV. 2458.44 ARIZ. HIGHWAY DEPT. DATUM FED. AID PROJECT #291935 SHEET 7 OF 14
- (7) AREA 32,060 FT.±

**RESULTS OF SURVEY**

OF THE SOUTH HALF OF LOT 17 AND ALL OF LOTS 18, 19 AND 20, BLOCK 2 OF VETERANS ADDITION SUBDIVISION AS RECORDED IN BOOK 5 IN MAPS AND PLATS AT PAGE 66 IN THE OFFICE OF THE PIMA COUNTY RECORDER, PIMA COUNTY, ARIZONA

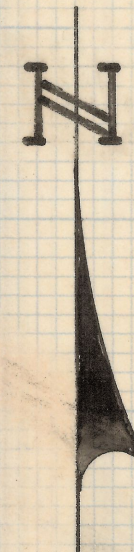


**Z-2019-064-001**  
 ROBERT F. MELLEN  
 REGISTERED LAND SURVEYOR  
 TUCSON, ARIZONA  
 JOB #79-1  
 JANUARY 1979

FD. 1" STEEL PIN  
IN HAND HOLE  
5' NORTH

VETERANS BLVD.

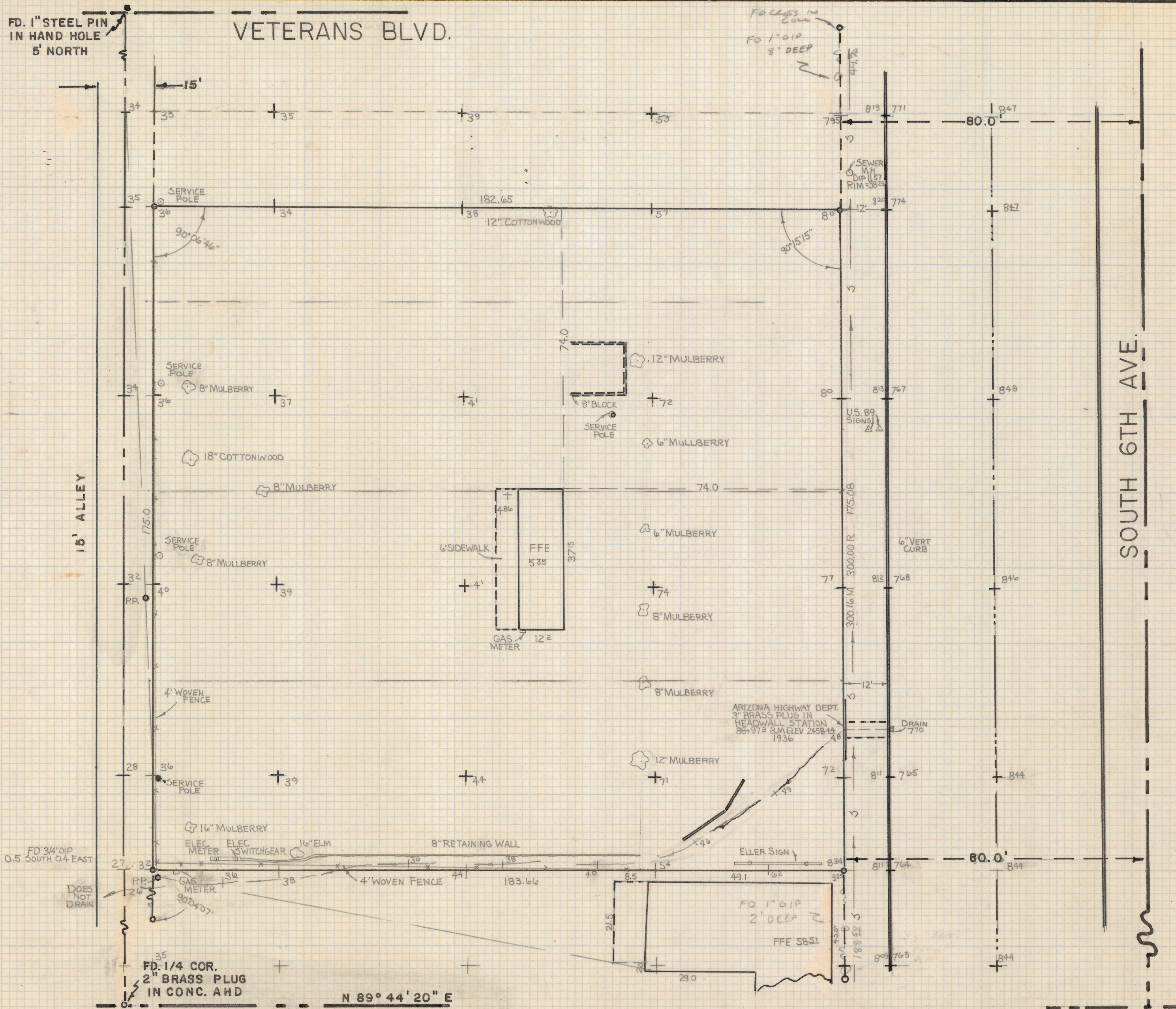
FD 1" OIP  
8" DEEP



SCALE 1" = 20'

**NOTES**

- (1) INDICATES 1/2" STEEL PIN MARKED L.S. 4680 SET UNLESS NOTED
- (2) BASIS OF BEARINGS - ARIZONA HIGHWAY DEPT. RIGHT OF WAY MAP SHOWING AJO ROAD AS N 89° 44' 20" E



AJO ROAD

**RESULTS OF SURVEY**

OF THE SOUTH HALF OF LOT 17 AND ALL OF  
 LOTS 18, 19 AND 20, BLOCK TWO OF THE VETERANS  
 ADDITION SUBDIVISION AS RECORDED IN BOOK FIVE  
 OF MAPS AND PLATS AT PAGE SIXTY-SIX IN THE  
 OFFICE OF THE PIMA COUNTY RECORDER, PIMA  
 COUNTY, ARIZONA

2-2019-064-002

ROBERT F. MELLE  
 REGISTERED LAND SURVEYOR  
 TUCSON, ARIZONA

JOB # 79-1  
 JANUARY 1979