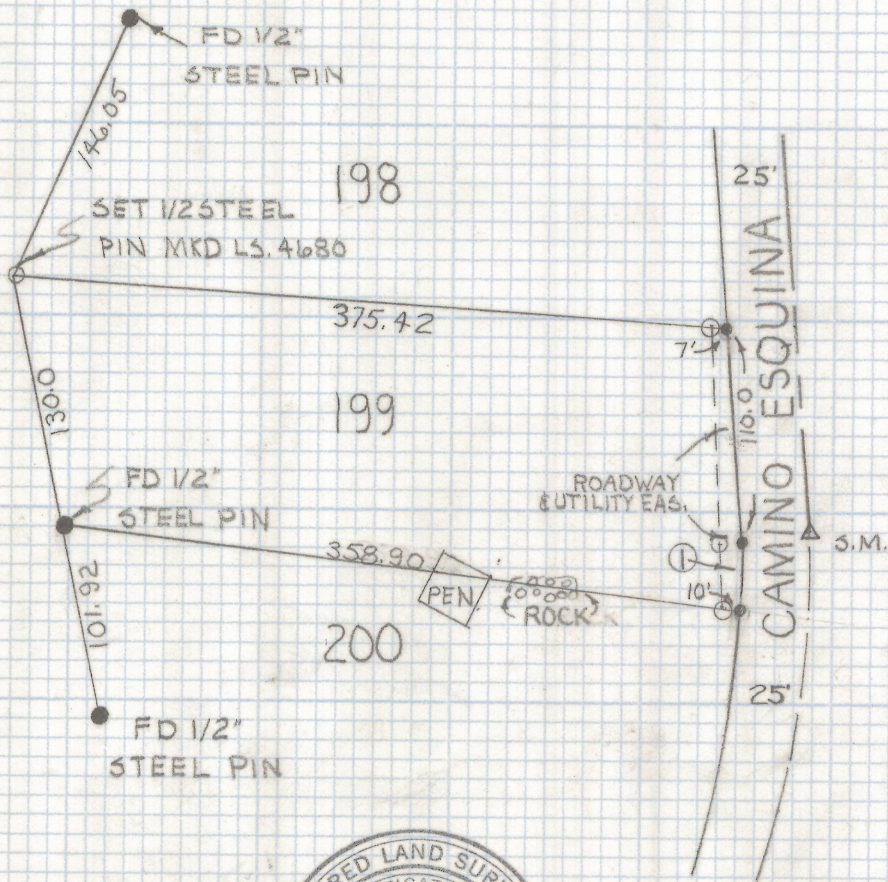
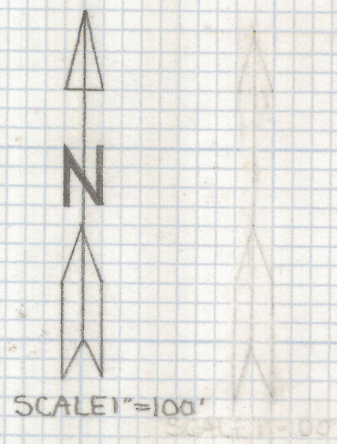


DISCLAIMER:

This unrecorded Record of Survey was donated to the City of Tucson. The City of Tucson provides this data for your personal use "as is." Additionally, the City of Tucson provides this information with the understanding that it is not guaranteed to be accurate, correct or complete and conclusions drawn from such information are the responsibility of the user.



CURVE DATA		
NO	RADIUS	DELTA LENGTH
1	433.13	4°30'39" 34.10



RESULTS OF SURVEY

OF LOT ONE-NINETY-NINE SKY LINE BEL AIR ESTATES AS RECORDED IN BOOK BOOK 18 PAGE 66 OF MAPS AND PLATS IN THE OFFICE OF THE PIMA COUNTY RECORDER, PIMA COUNTY, ARIZONA.

NOTES

- (1) INDICATES SET NAIL
- (2) INDICATES SET 1/2" STEEL PIN MKD L.S. 4680 UNLESS NOTED
- (3) INDICATES FOUND 1/2" STEEL PIN
- (4) SET NAILS ON SOUTH LINE



ROBERT F. MELLEN
 REGISTERED LAND SURVEYOR
 TUCSON, ARIZONA
 JOB # 79-18

2-2019-072