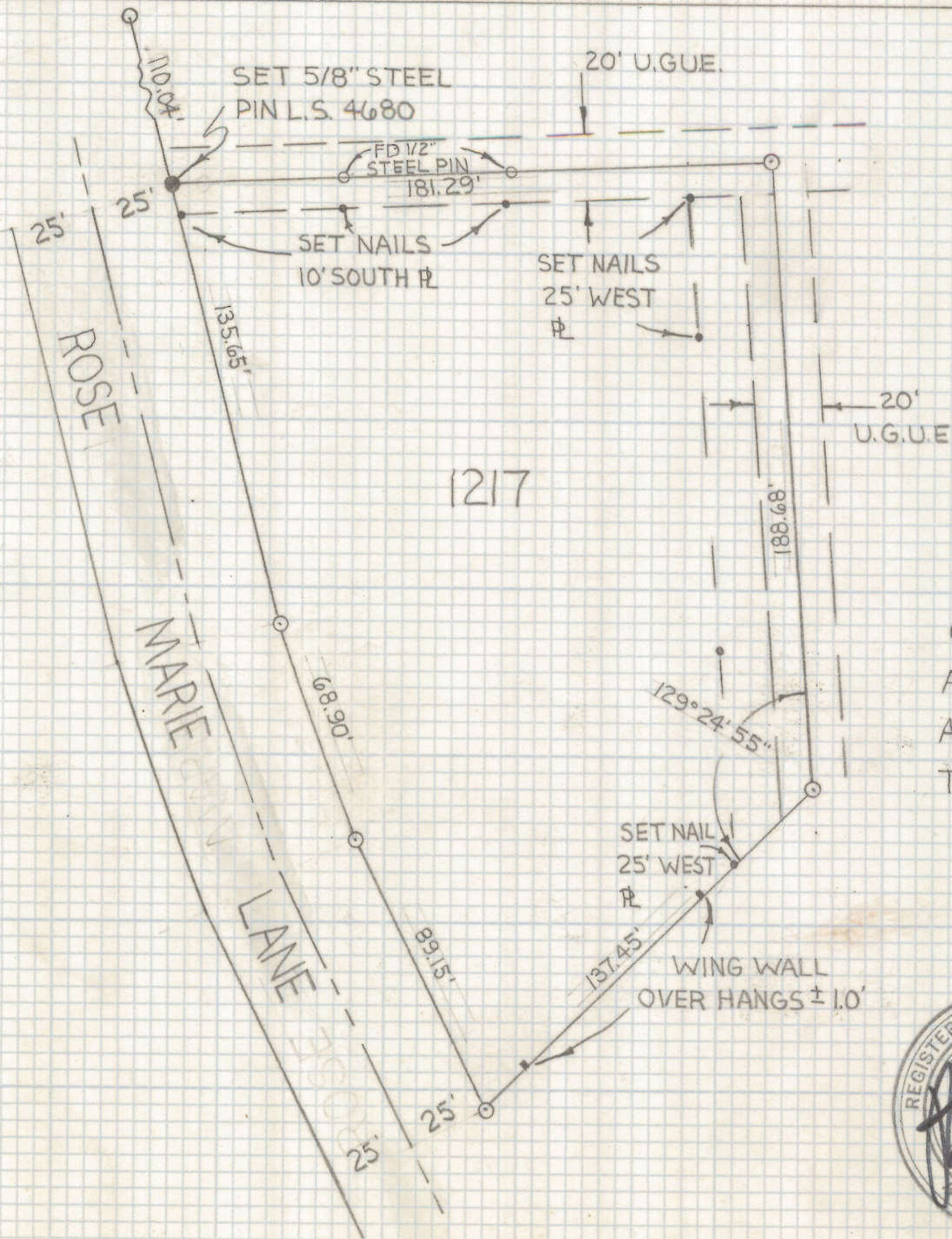


DISCLAIMER:

This unrecorded Record of Survey was donated to the City of Tucson. The City of Tucson provides this data for your personal use "as is." Additionally, the City of Tucson provides this information with the understanding that it is not guaranteed to be accurate, correct or complete and conclusions drawn from such information are the responsibility of the user.



1217

RESULTS OF SURVEY
 OF LOT 1217 TUCSON NATIONAL ESTATES WEST
 AS RECORDED IN BOOK 20 OF MAPS AND PLATS
 AT PAGE 20 AS RECORDED IN THE OFFICE OF
 THE PIMA COUNTY RECORDER PIMA COUNTY ARIZONA

- NOTES -

- 1) INDICATES FOUND ACP UNLESS NOTED MKD P.E. 1260



2-2019-073
 ROBERT F. MELLEN
 REGISTERED LAND SURVEYOR
 TUCSON, ARIZONA
 JOB# 79-19