

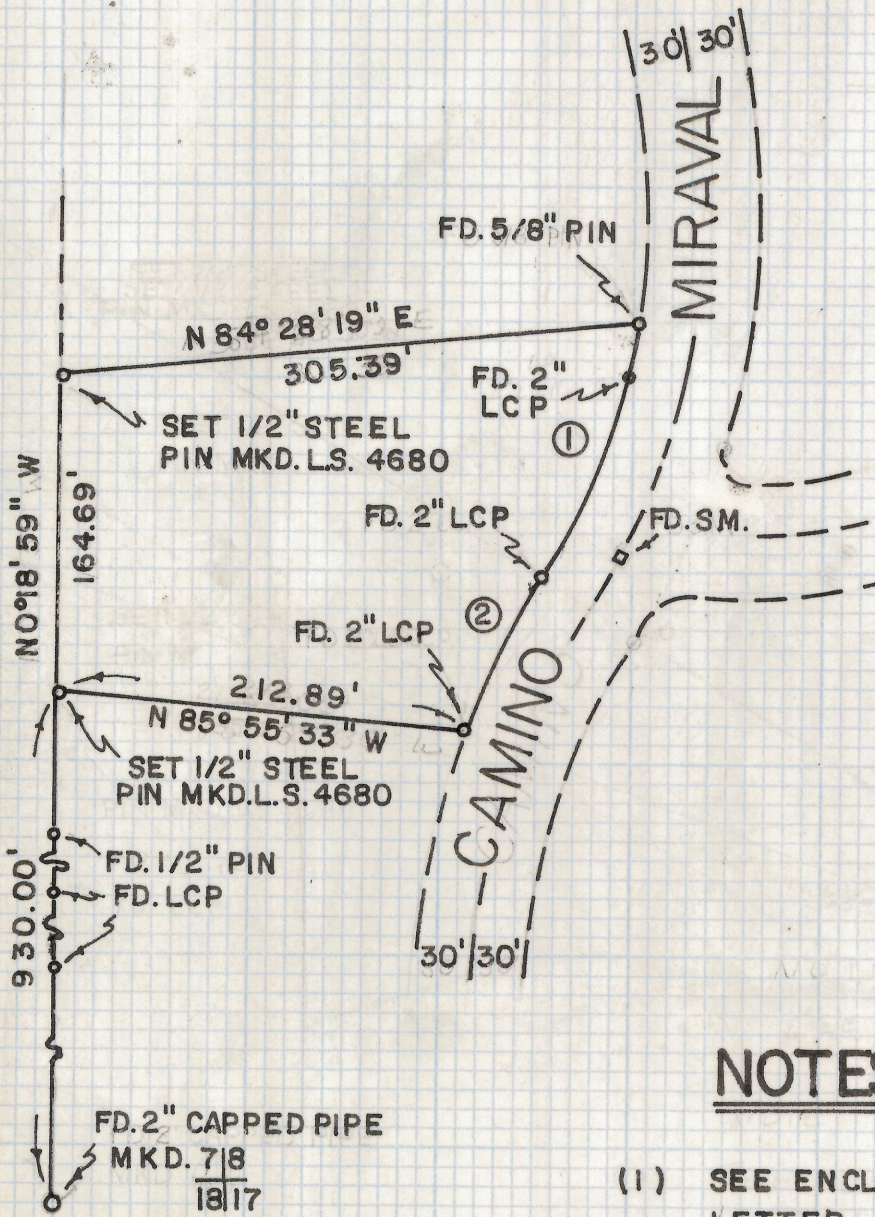
DISCLAIMER:

This unrecorded Record of Survey was donated to the City of Tucson. The City of Tucson provides this data for your personal use "as is." Additionally, the City of Tucson provides this information with the understanding that it is not guaranteed to be accurate, correct or complete and conclusions drawn from such information are the responsibility of the user.

CURVE DATA			
NO.	RADIUS	DELTA	LENGTH
1	355.0	22°11'12"	137.47
2	445.0	11°49'31"	91.84



SCALE 1" = 100'



RESULTS OF SURVEY

OF A PORTION OF THE SOUTHWEST QUARTER OF SECTION EIGHT, TOWNSHIP THIRTEEN SOUTH OF RANGE FOURTEEN EAST, GILA AND SALT RIVER BASE AND MERIDIAN, PIMA COUNTY, ARIZONA

NOTES

(1) SEE ENCLOSED LETTER



2-2019-074

ROBERT F. MELLEN
REGISTERED LAND SURVEYOR
TUCSON, ARIZONA

JOB #79-19
FEB. 1979