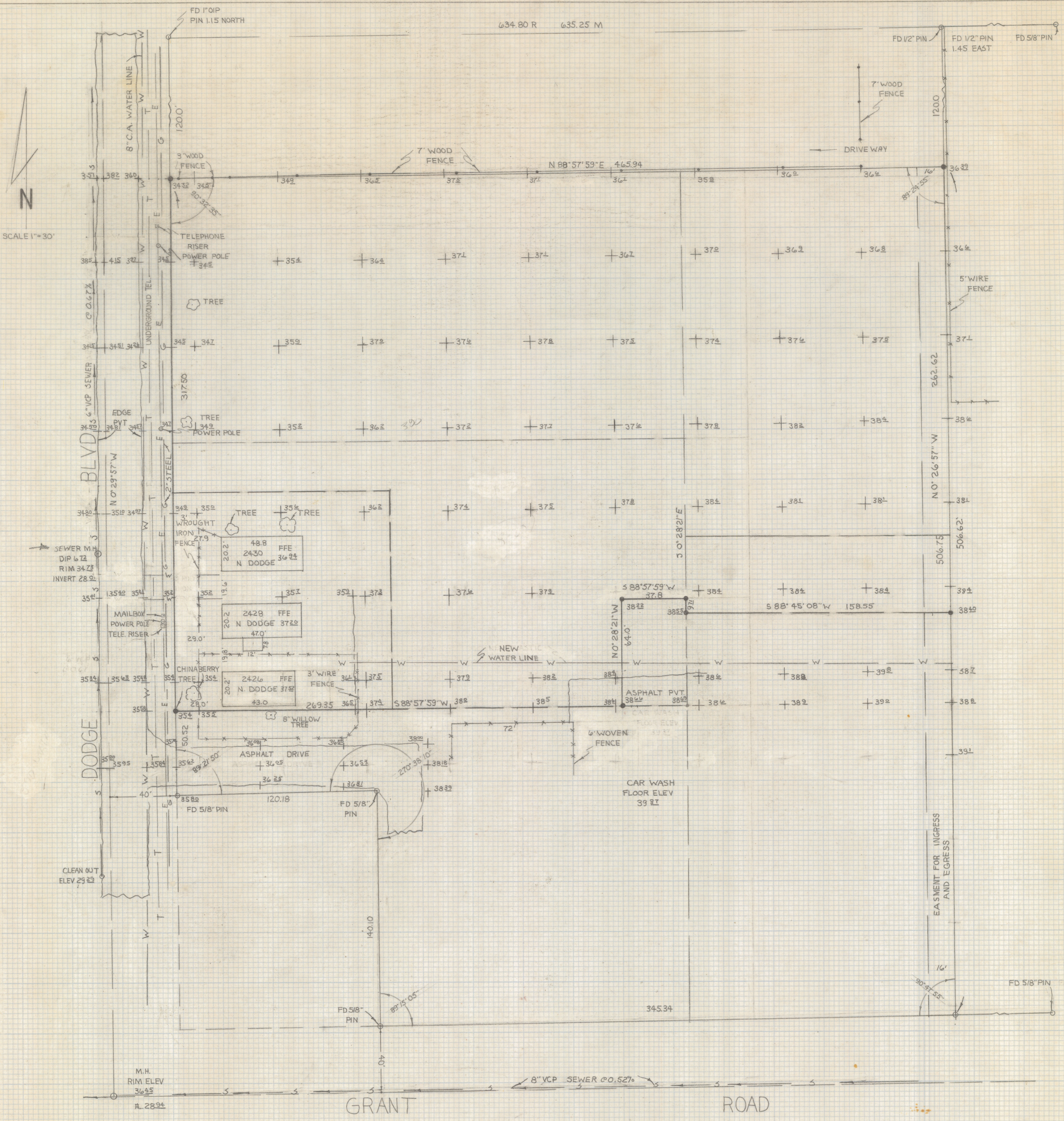


DISCLAIMER:

This unrecorded Record of Survey was donated to the City of Tucson. The City of Tucson provides this data for your personal use "as is." Additionally, the City of Tucson provides this information with the understanding that it is not guaranteed to be accurate, correct or complete and conclusions drawn from such information are the responsibility of the user.



NOTES

- (1) BASIS OF BEARINGS N 0° 29' 57" W FOR DODGE BOULEVARD AS SHOWN ON FLOWER SQUARE BOOK 16 PAGE 79 M&P
- (2) ● INDICATES 1/2" STEEL PIN MKD LS. 4680 SET UNLESS NOTED.
- (3) FLOW LINE OF M.H. @ C. OF DODGE & GRANT TAKEN FROM PLAN G 223 CITY OF TUCSON NOT VERIFIED
- (4) BENCH MARK DATUM CITY OF TUCSON PLAN G-288 SHOWING FLOWLINE OF M.H.# 4 AS 2428⁰⁴
- (5) PORTIONS OF THIS LOT APPEAR TO BE LOOSE FILL
- (6) CAUTION! UNDERGROUND UTILITIES IN THE AREA CALL BLUE STAKE BEFORE DIGGING 792-2211

RESULTS OF SURVEY

OF A PORTION OF LOT 4 AND THE WEST HALF OF LOT 3 BLOCK I CATALINA FARMS ANNEX AS RECORDED IN BOOK 4 MAPS AND PLATS AT PAGE 35 AS RECORDED IN THE OFFICE OF THE PIMA COUNTY RECORDER, PIMA COUNTY, ARIZONA



2-2019-079
 ROBERT F. MELLEN
 REGISTERED LAND SURVEYOR
 TUCSON, ARIZONA
 JOB # 79-28