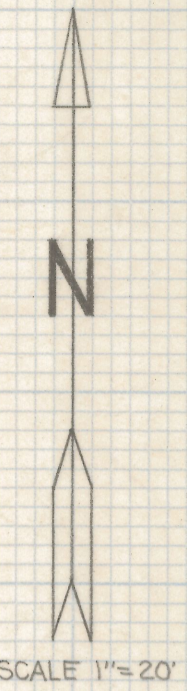
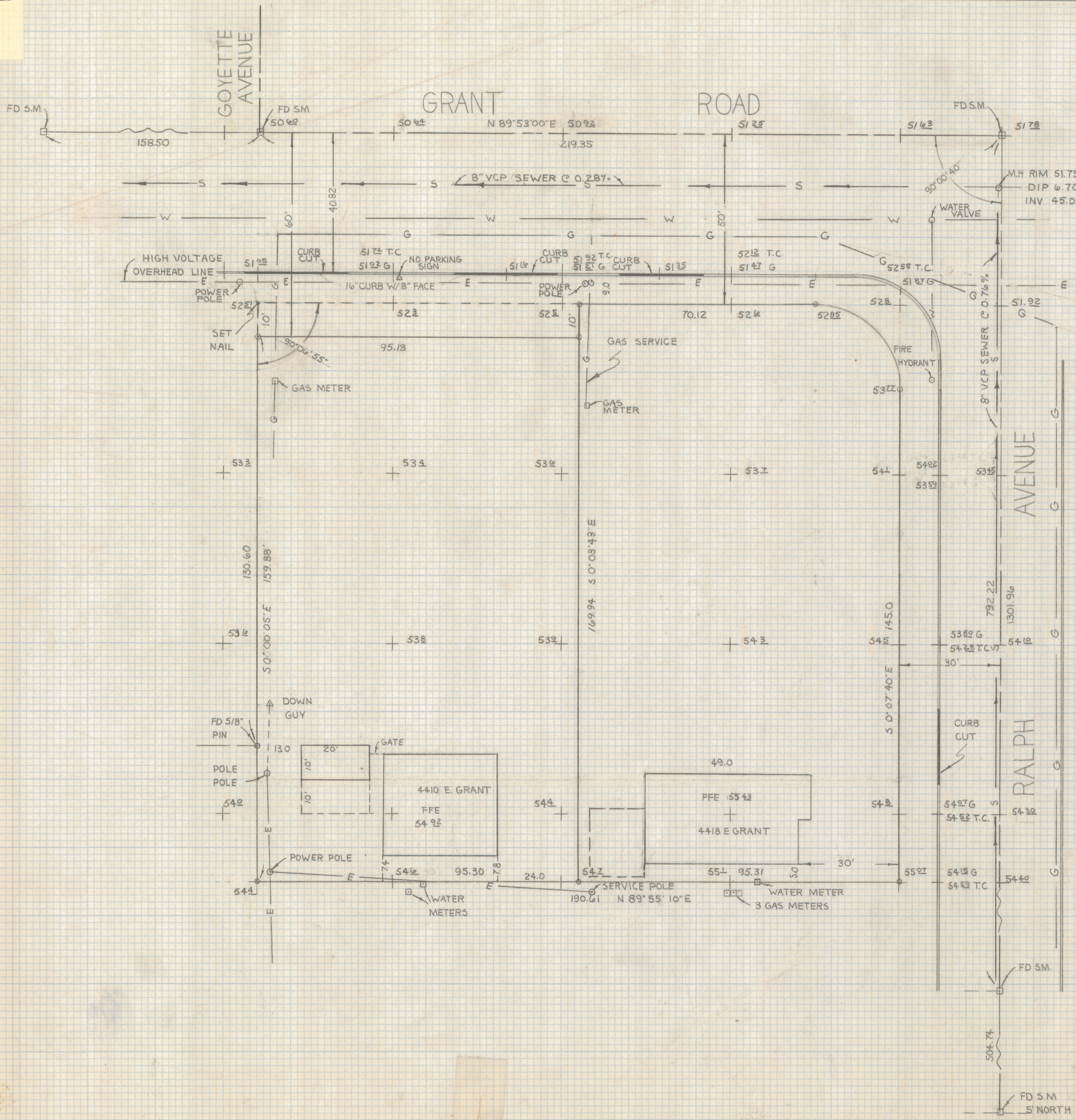


# **DISCLAIMER:**

**This unrecorded Record of Survey was donated to the City of Tucson. The City of Tucson provides this data for your personal use "as is." Additionally, the City of Tucson provides this information with the understanding that it is not guaranteed to be accurate, correct or complete and conclusions drawn from such information are the responsibility of the user.**



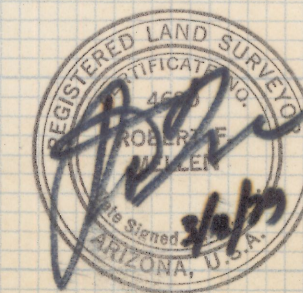
SCALE 1"=20'

### RESULTS OF SURVEY

OF PORTIONS OF LOTS 1, 2 AND 8 OF TOWNER ADDITION AS RECORDED IN BOOK 7 PAGE 40 OF MAPS AND PLAT AS RECORDED IN THE OFFICE OF THE PIMA COUNTY RECORDER PIMA COUNTY ARIZONA

### NOTES

- (1) INDICATES 1/2" STEEL PIN SET MKD LS. 4680 UNLESS NOTED
- (2) BENCH MARK DATUM CITY OF TUCSON PLAN I-852 SHOWING MH AT E GRANT ROAD AND RALPH AVE WITH A WEST INVERT OF 2445.05
- (3) CAUTION UNDERGROUND UTILITIES IN THE AREA CALL BLUE STAKE 792-2211 BEFORE DIGGING
- (4) BASIS OF BEARINGS GLO PLAT



**Z-2019-080**  
 ROBERT F. MELLEN  
 REGISTERED LAND SURVEYOR  
 TUCSON, ARIZONA  
 JOB# 79-29