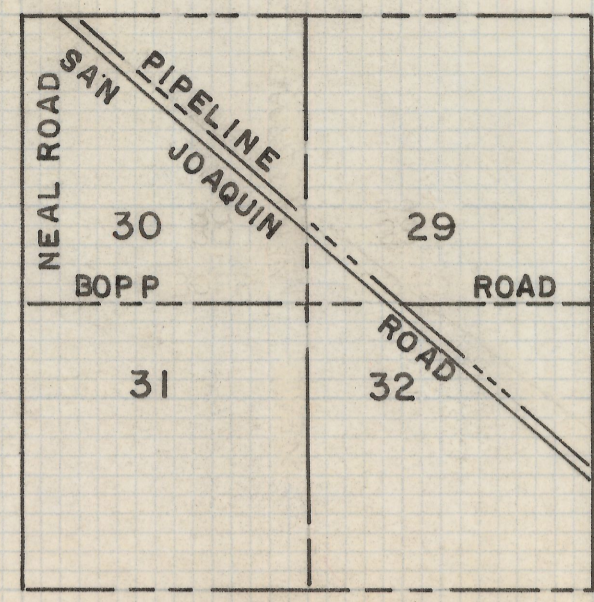
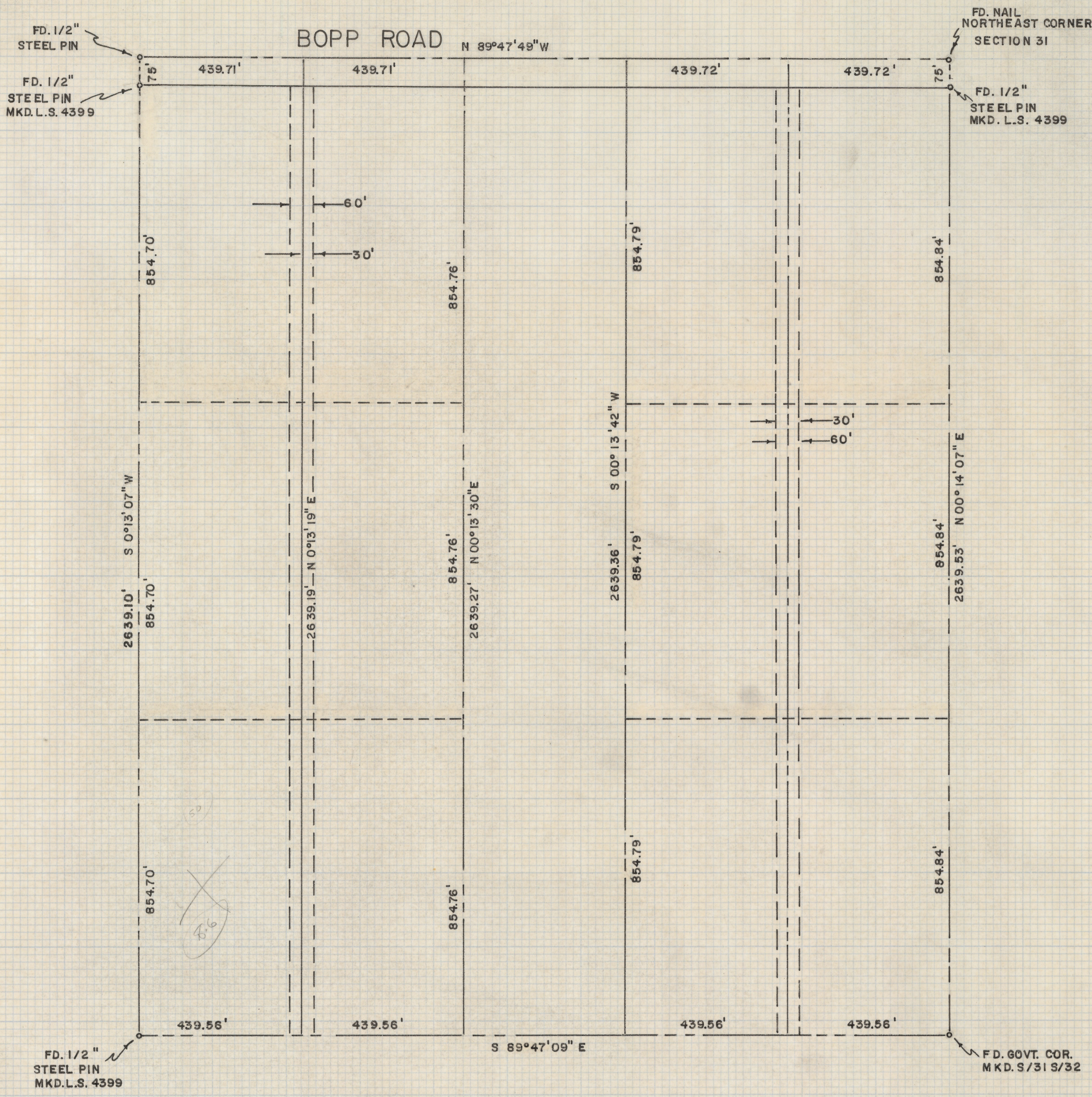
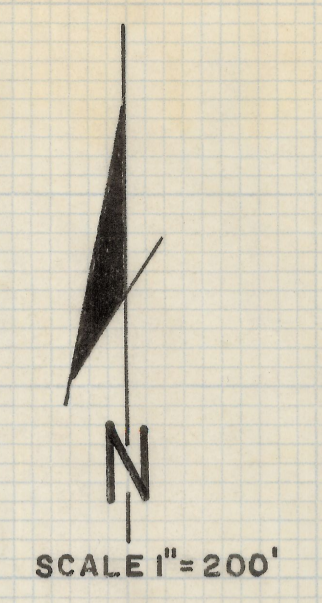


DISCLAIMER:

This unrecorded Record of Survey was donated to the City of Tucson. The City of Tucson provides this data for your personal use "as is." Additionally, the City of Tucson provides this information with the understanding that it is not guaranteed to be accurate, correct or complete and conclusions drawn from such information are the responsibility of the user.



LOCATION PLAN
SCALE 3" = 1 MILE
PORTIONS OF SECTIONS 29, 30,
31 AND 32 T. 14 S R. 12 E 683RB&M
PIMA COUNTY, ARIZONA



NOTES

- (1) INDICATES 1/2" STEEL PIN MKD. L.S. 4680 SET UNLESS NOTED
- (2) M - MEASURED
- (3) R - MAP OR DEED RECORD

RESULTS OF SURVEY

OF A PORTION OF THE NORTHEAST QUARTER OF SECTION THIRTY-ONE, TOWNSHIP FOURTEEN SOUTH, RANGE TWELVE EAST, GILA AND SALT RIVER BASE AND MERIDIAN, PIMA COUNTY, ARIZONA

Z-2019-082-001
ROBERT F. MELLE
REGISTERED LAND SURVEYOR
TUCSON, ARIZONA
JOB # 79-32
APRIL 1979

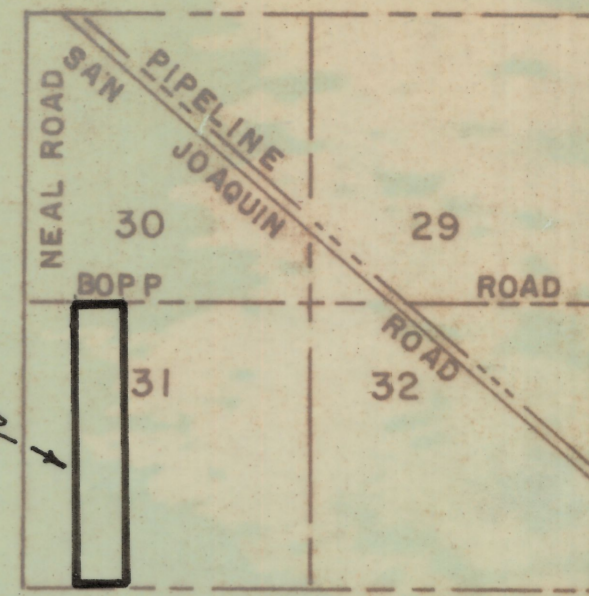
FD. 1/2"
STEEL PIN
MKD. L.S. 4399

BOPP ROAD N 89°47'49"W

1758.86'

FD. NAIL
NORTHEAST CORNER
SECTION 31

FD. 1/2"
STEEL PIN
MKD. L.S. 4399



SCALE 1"=200'

LOCATION PLAN
SCALE 3"=1 MILE

PORTIONS OF SECTIONS 29,30,
31 AND 32 T.14 S R.12 E 683RB&M
PIMA COUNTY, ARIZONA

2639.10' S 0°13'07"W

2639.19' N 0°13'19"E

2639.53' N 00°14'07"E

439.56'

1758.24'

S 89°47'09" E

FD. GOVT. COR.
MKD. S/31 S/32

FD. 1/2"
STEEL PIN
MKD. L.S. 4399

RESULTS OF SURVEY

OF A PORTION OF THE NORTHEAST QUARTER OF SECTION
THIRTY-ONE, TOWNSHIP FOURTEEN SOUTH, RANGE TWELVE
EAST, GILA AND SALT RIVER BASE AND MERIDIAN, PIMA
COUNTY, ARIZONA

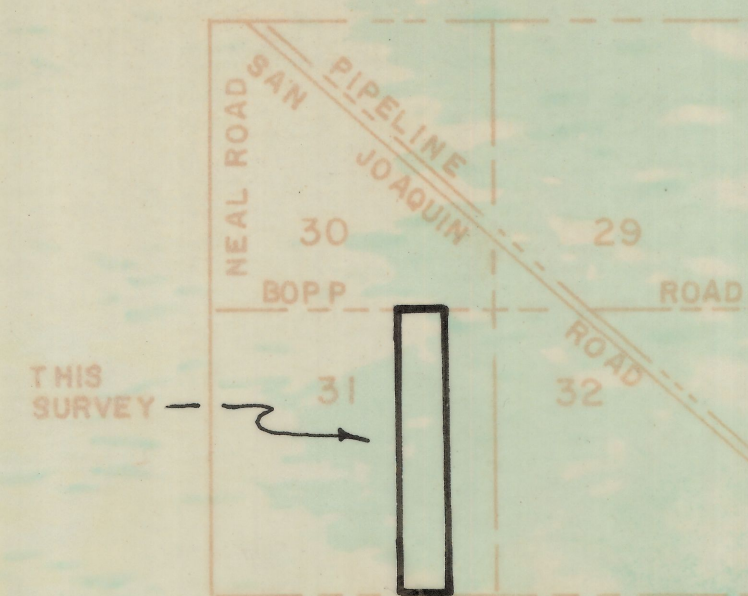
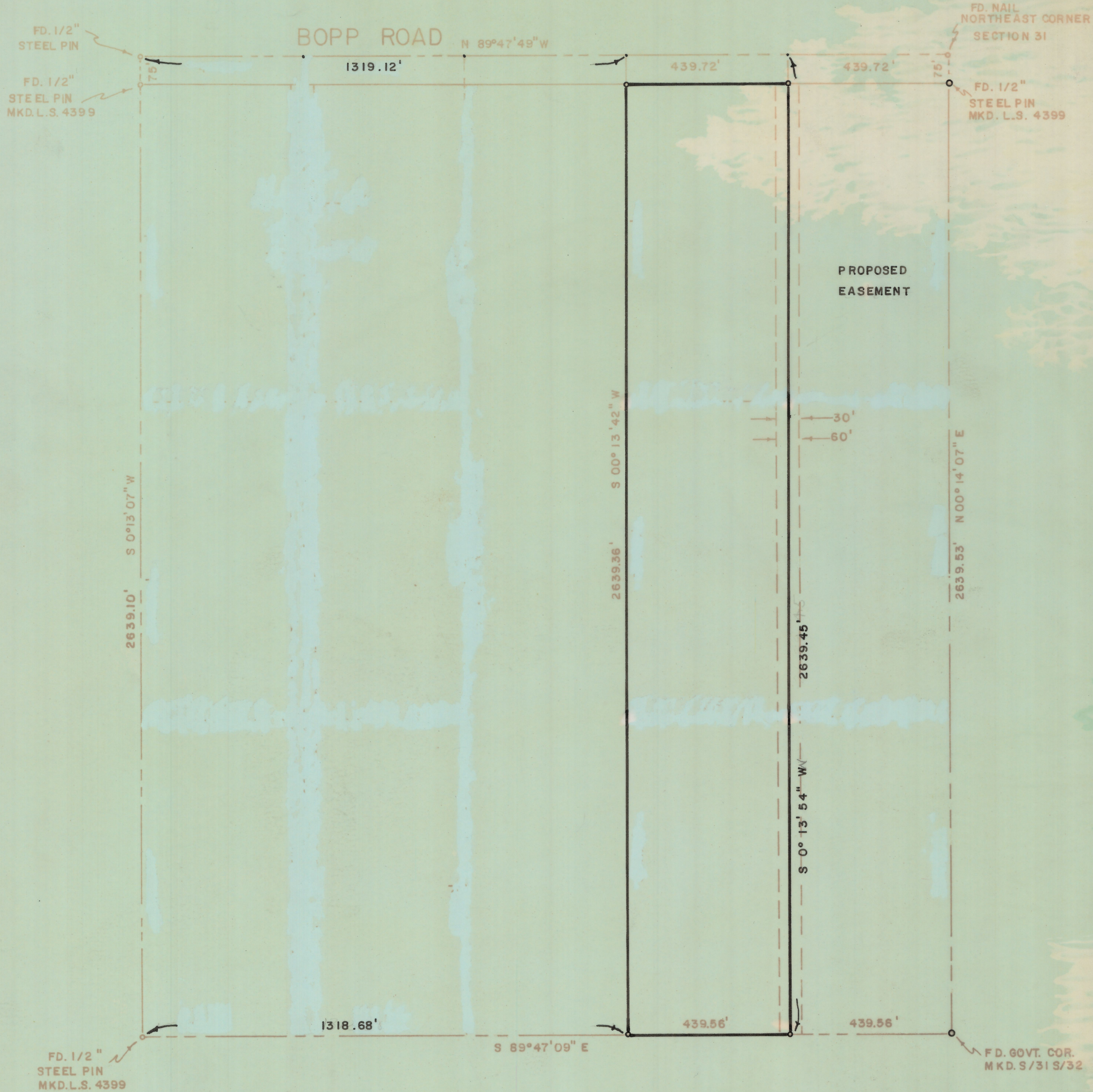
NOTES

- (1) INDICATES 1/2" STEEL PIN MKD. L.S. 4680 SET UNLESS NOTED
- (2) M - MEASURED
- (3) R - MAP OR DEED RECORD

Z-2019-082-002

ROBERT F. MELLEN
REGISTERED LAND SURVEYOR
TUCSON, ARIZONA

JOB # 79-56
APRIL 1979



LOCATION PLAN
SCALE 3" = 1 MILE

PORTIONS OF SECTIONS 29, 30,
31 AND 32 T. 14 S. R. 12 E. 68SR88M
PIMA COUNTY, ARIZONA

NOTES

- (1) INDICATES 1/2" STEEL PIN MKD. L.S. 4660 SET UNLESS NOTED
- (2) M - MEASURED
- (3) R - MAP OR DEED RECORD

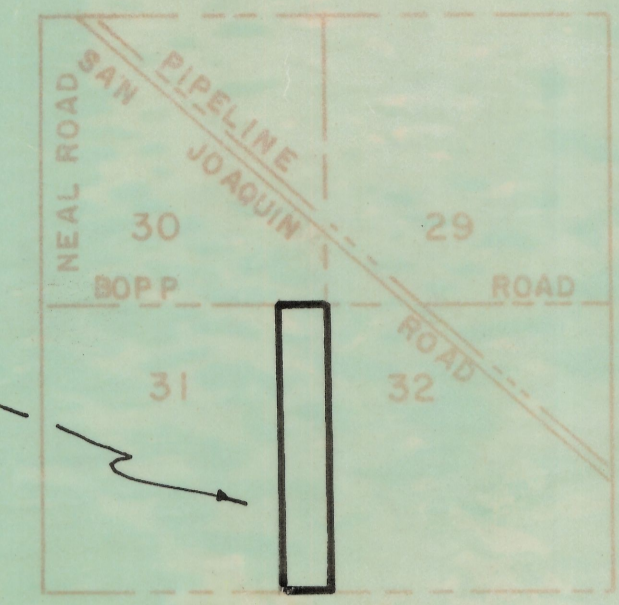
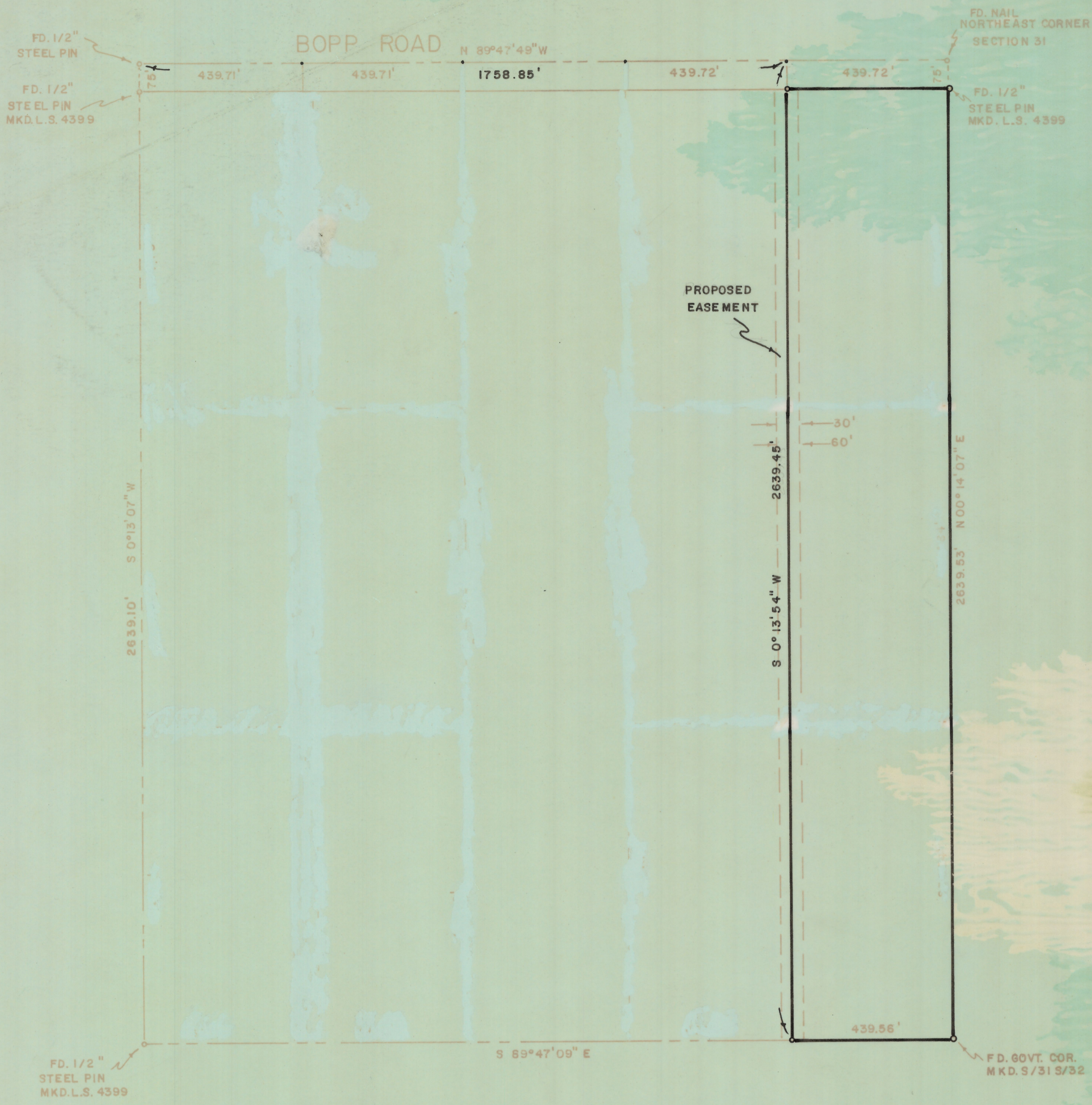
RESULTS OF SURVEY

OF A PORTION OF THE NORTHEAST QUARTER OF SECTION THIRTY-ONE, TOWNSHIP FOURTEEN SOUTH, RANGE TWELVE EAST, GILA AND SALT RIVER BASE AND MERIDIAN, PIMA COUNTY, ARIZONA

2-2019-082-003

ROBERT E. MELLEN
REGISTERED LAND SURVEYOR
TUCSON, ARIZONA

JOB # 78 57
APRIL 1979



LOCATION PLAN
SCALE 3"=1 MILE
PORTIONS OF SECTIONS 29, 30,
31 AND 32 T. 14 S. R. 12 E. 683R88M
PIMA COUNTY, ARIZONA

SCALE 1"=200'

NOTES

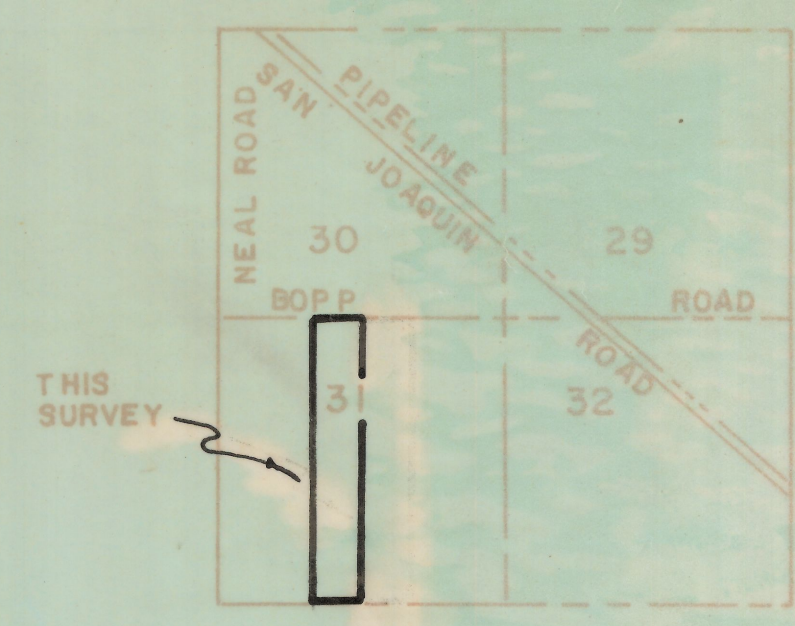
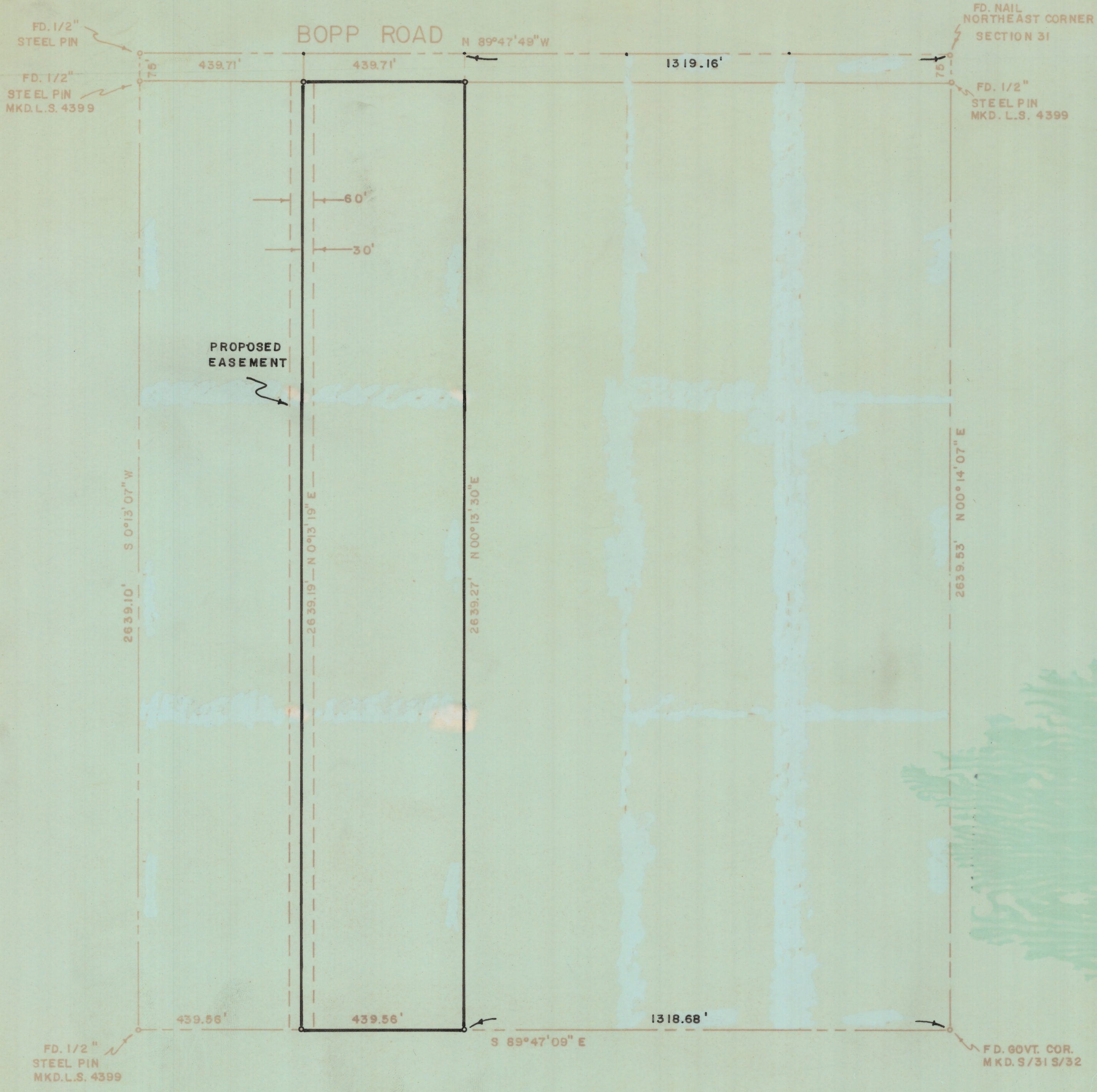
- (1) T INDICATES 1/2" STEEL PIN MKD. L.S. 4680 SET UNLESS NOTED
- (2) M - MEASURED
- (3) R - MAP OR DEED RECORD

RESULTS OF SURVEY

OF A PORTION OF THE NORTHEAST QUARTER OF SECTION THIRTY-ONE, TOWNSHIP FOURTEEN SOUTH, RANGE TWELVE EAST, GILA AND SALT RIVER BASE AND MERIDIAN, PIMA COUNTY, ARIZONA

2-209-082-004

ROBERT F. MULLIN
REGISTERED LAND SURVEYOR
TUCSON, ARIZONA
JOB # 79-58
APRIL 1979



LOCATION PLAN
SCALE 3"=1 MILE
PORTIONS OF SECTIONS 29, 30,
31 AND 32 T. 14 S. R. 12 E. G55R55M
PIMA COUNTY, ARIZONA

SCALE 1"=200'

NOTES

- (1) INDICATES 1/2" STEEL PIN MKD. L.S. 4880 SET UNLESS NOTED
- (2) M - MEASURED
- (3) R - MAP OR DEED RECORD

RESULTS OF SURVEY

OF A PORTION OF THE NORTHEAST QUARTER OF SECTION THIRTY-ONE, TOWNSHIP FOURTEEN SOUTH, RANGE TWELVE EAST, GILA AND SALT RIVER BASE AND MERIDIAN, PIMA COUNTY, ARIZONA

Z-2019-082-005

ROBERT F. MELLER
REGISTERED LAND SURVEYOR
TUCSON, ARIZONA
JOB # 79 59
APRIL 1975