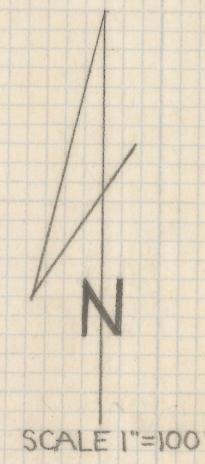
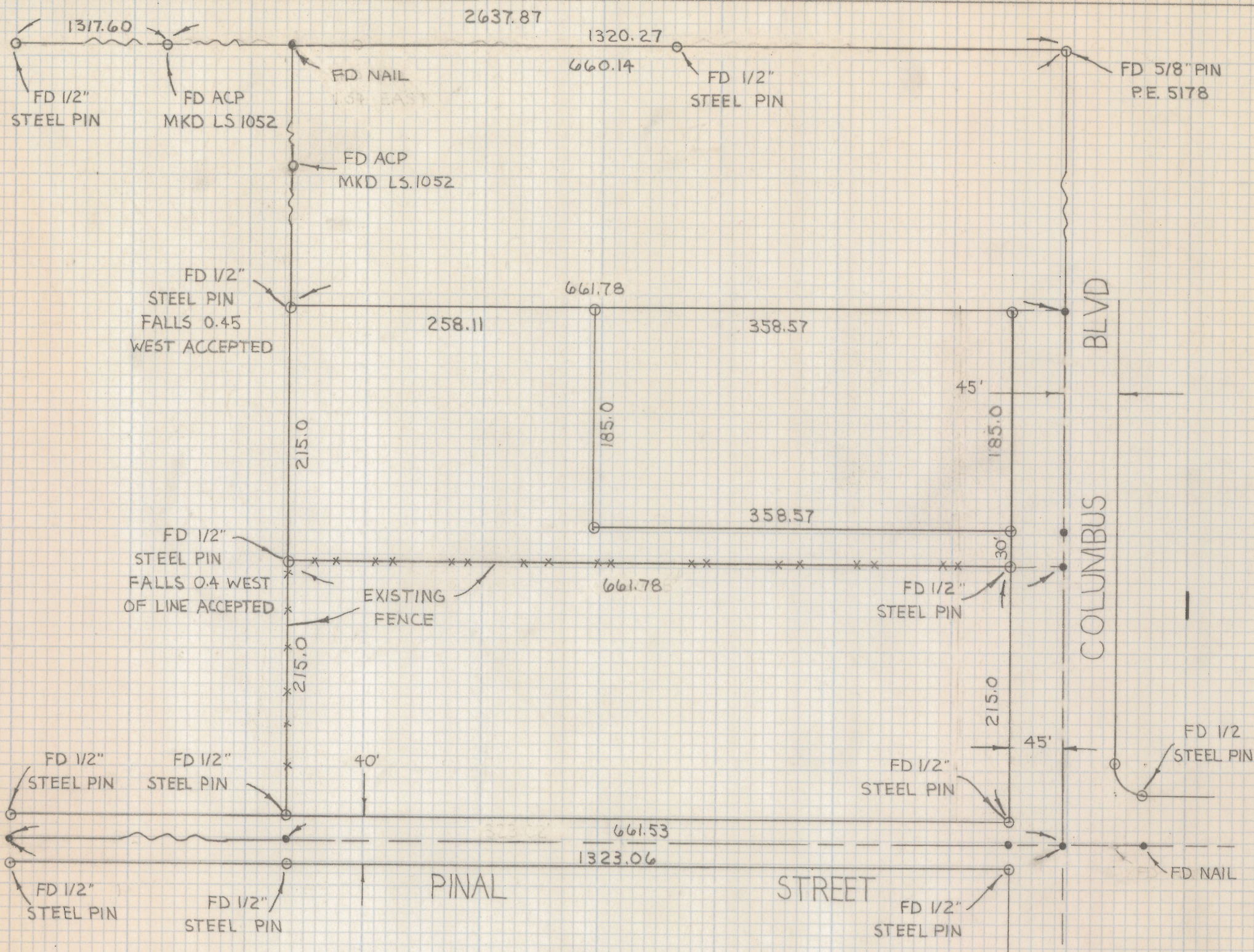


DISCLAIMER:

This unrecorded Record of Survey was donated to the City of Tucson. The City of Tucson provides this data for your personal use "as is." Additionally, the City of Tucson provides this information with the understanding that it is not guaranteed to be accurate, correct or complete and conclusions drawn from such information are the responsibility of the user.



RESULTS OF SURVEY

OF THE NORTH 215 FEET OF THE SOUTH 450 FEET OF THE SOUTHEAST QUARTER OF THE SOUTHEAST QUARTER OF THE NORTHWEST QUARTER OF SECTION 3, TOWNSHIP 11 SOUTH, RANGE 14 EAST GILA AND SALT RIVER BASE AND MERIDIAN PIMA COUNTY, ARIZONA

—NOTES—

- 1) INDICATES 1/2 STEEL PIN MKD L.S. 4680 UNLESS NOTED
- 2) INDICATES SET NAIL UNLESS NOTED
- 3) FENCES AND IMPROVEMENTS SHOULD BE BUILT APPROXIMATELY 1/2 FOOT WEST OF PINS DUE TO CONFLICT ON NORTH LINE OF SECTION



2-2019-084

ROBERT F. MELLEN
 REGISTERED LAND SURVEYOR
 TUCSON, ARIZONA
 JOB# 79-37