

DISCLAIMER:

This unrecorded Record of Survey was donated to the City of Tucson. The City of Tucson provides this data for your personal use "as is." Additionally, the City of Tucson provides this information with the understanding that it is not guaranteed to be accurate, correct or complete and conclusions drawn from such information are the responsibility of the user.



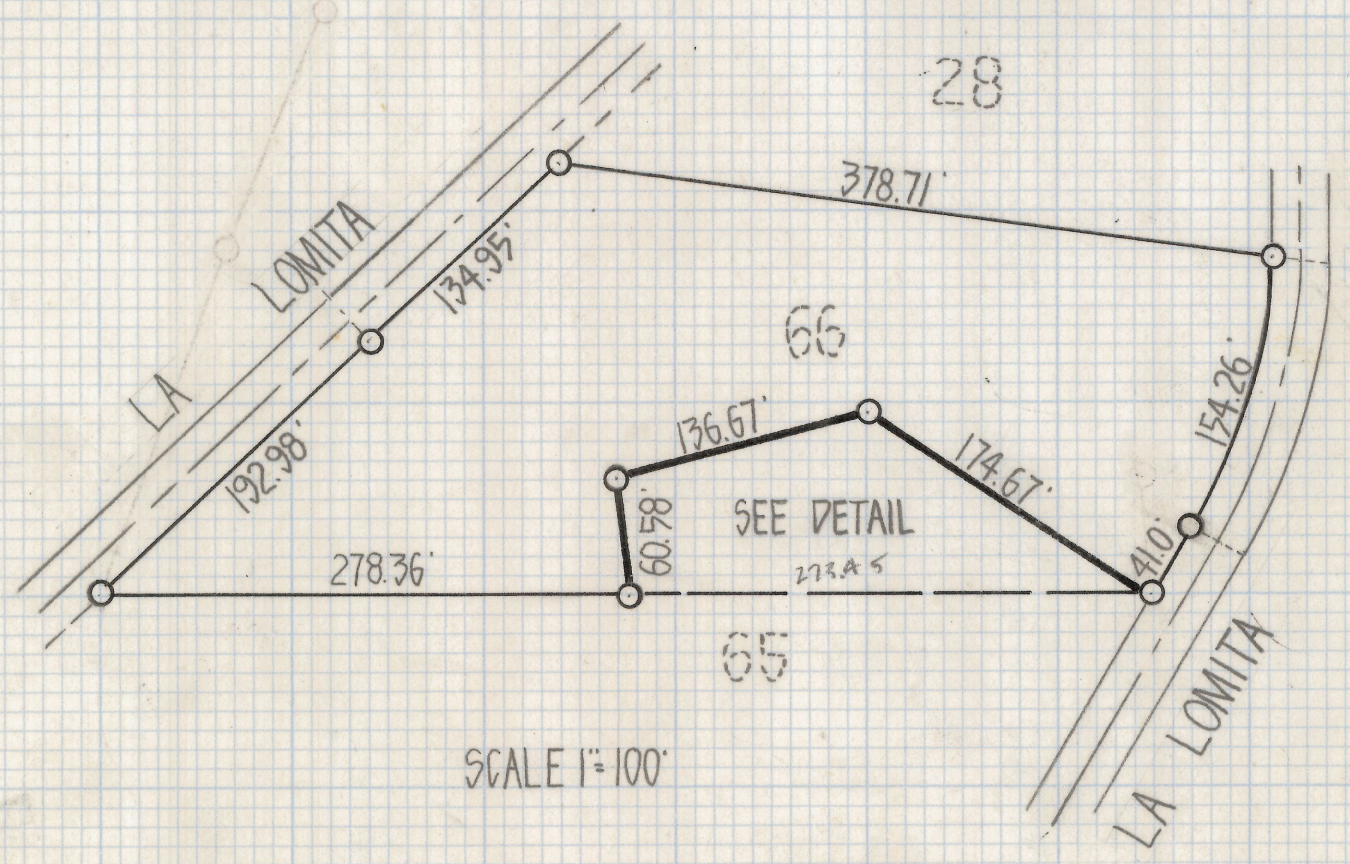
DETAIL
SCALE 1"=20'

RESULTS OF SURVEY

OF A PORTION OF LOT 66, CATALINA FOOTHILLS ESTATES AS RECORDED
IN BOOK 6 OF MAPS AND PLATS AT PAGE 57 IN THE OFFICE OF THE
PIMA COUNTY RECORDER, PIMA COUNTY ARIZONA

NOTES

- (1) LOCATION OF ALL IMPROVEMENTS MADE BY STADIA
- (2) LOCATION OF RAILROAD TIES APPROXIMATE
- (3) WE WERE NOT ABLE TO ENTER POOL AREA LOCATION OF POOL ESTIMATED



SCALE 1"=100'

6019
836



ROBERT F. MELLEN
REGISTERED LAND SURVEYOR
TUCSON, ARIZONA
JOB # 79-39

Z-2019-086
(REVISED TO SHOW CERTAIN IMPROVEMENTS) 9/11/80

0.12
J.F.M. J.F.M.
327-4585
11-5-84