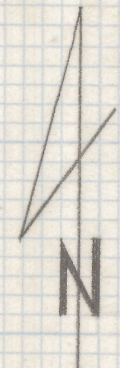
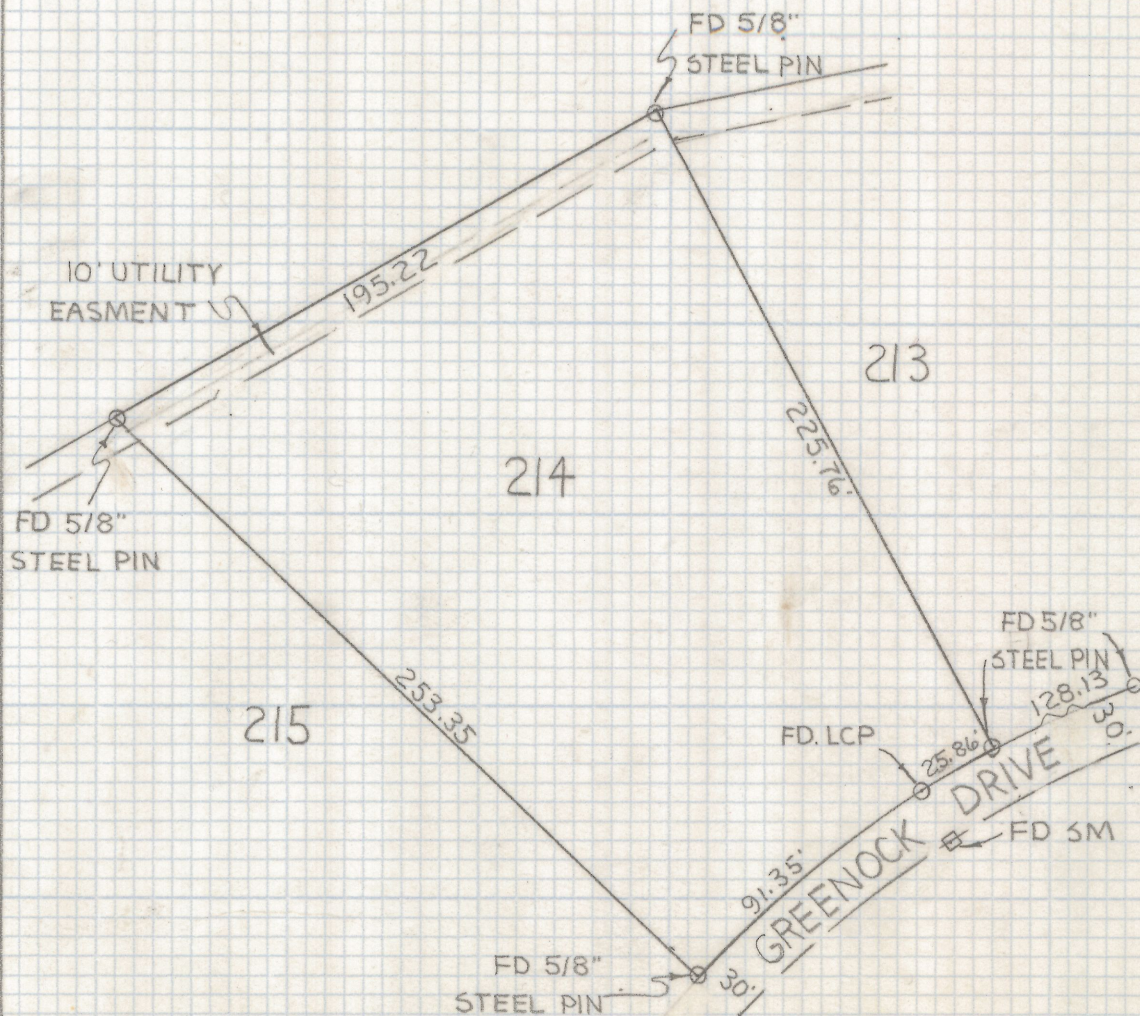


DISCLAIMER:

This unrecorded Record of Survey was donated to the City of Tucson. The City of Tucson provides this data for your personal use "as is." Additionally, the City of Tucson provides this information with the understanding that it is not guaranteed to be accurate, correct or complete and conclusions drawn from such information are the responsibility of the user.



SCALE 1"=60'

RESULTS OF SURVEY

OF LOT 214 OF ORO VALLEY ESTATES
 RECORDED IN BOOK 13 OF MAPS AND
 PLATS AT PAGE 60 AS RECORDED
 IN THE OFFICE OF THE PIMA
 COUNTY RECORDER PIMA COUNTY
 ARIZONA

CURVE		TABLE				
NO.	RADIUS	DELTA	CHORD	TANGENT	LENGTH	$\Delta/2$
1	330.0	15°54'08"	91.29	46.09	91.59	7°57'04"
2	630.0	2°21'06"	25.86	12.93	25.86	1°10'33"
3	630.0	11°40'22"	128.13	64.40	128.13	5°50'11"



Z-2019-087

ROBERT F. MELLEN
 REGISTERED LAND SURVEYOR
 TUCSON, ARIZONA
 JOB# 79-40