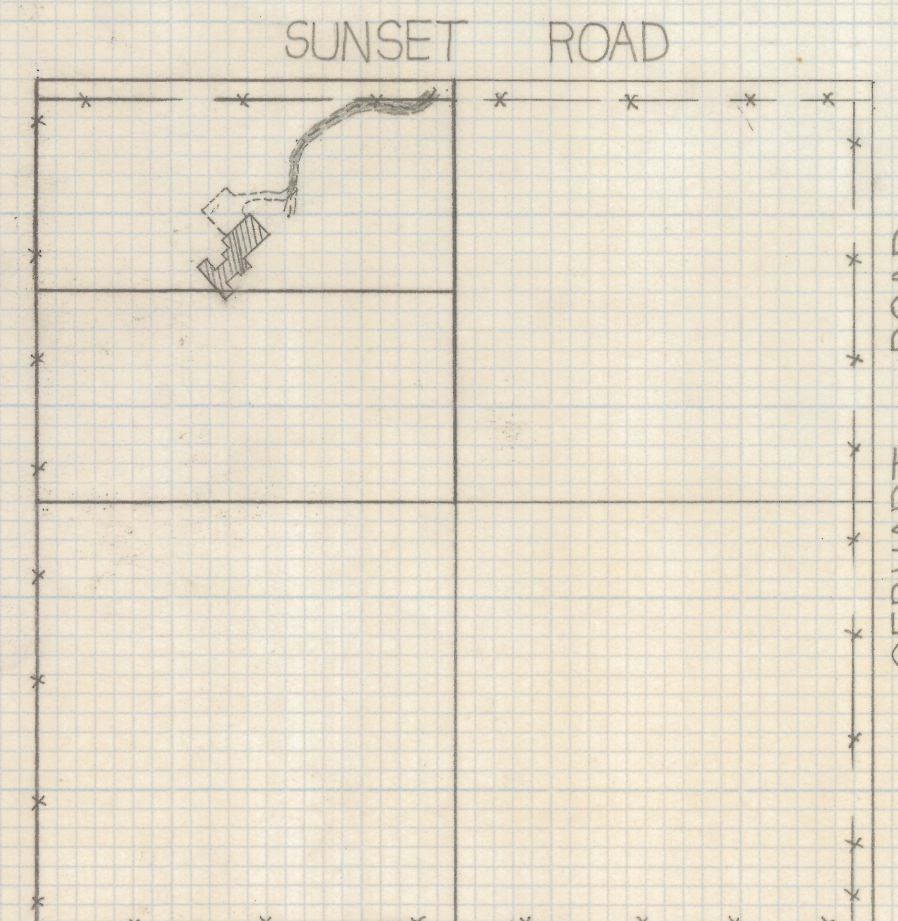


DISCLAIMER:

This unrecorded Record of Survey was donated to the City of Tucson. The City of Tucson provides this data for your personal use "as is." Additionally, the City of Tucson provides this information with the understanding that it is not guaranteed to be accurate, correct or complete and conclusions drawn from such information are the responsibility of the user.

SUNSET ROAD

656.19' S 89°57'00"W



LOCATION PLAN
SCALE 1"=300'
N.E. 1/4 SEC 14 TWP 13 S R12 E
G&S.R.B.&M



656.38' N 89°59'58"E

SCALE 1"=40'

RESULTS OF TOPOGRAPHICAL SURVEY

OF A PORTION OF THE NORTH HALF OF THE NORTHWEST QUARTER OF THE NORTHEAST QUARTER OF THE NORTHWEST QUARTER SECTION 14, TOWNSHIP 13 SOUTH RANGE 12 EAST GILA AND SALT RIVER BASE AND MERIDIAN PIMA COUNTY ARIZONA

—NOTES—

- 1) CONTOUR INTERVAL 4 FOOT
- 2) BOUNDARY SURVEY JOB# 79-4
- 3) BENCH MARK DATUM FROM U.S. TOPOGRAPHICAL SURVEY JAYNES-QUADRANGLE



ROBERT F. MELLEN
REGISTERED LAND SURVEYOR
TUCSON, ARIZONA
JOB# 79-42

2-2019-088