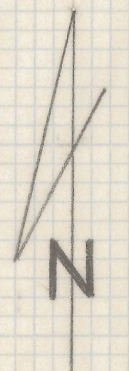
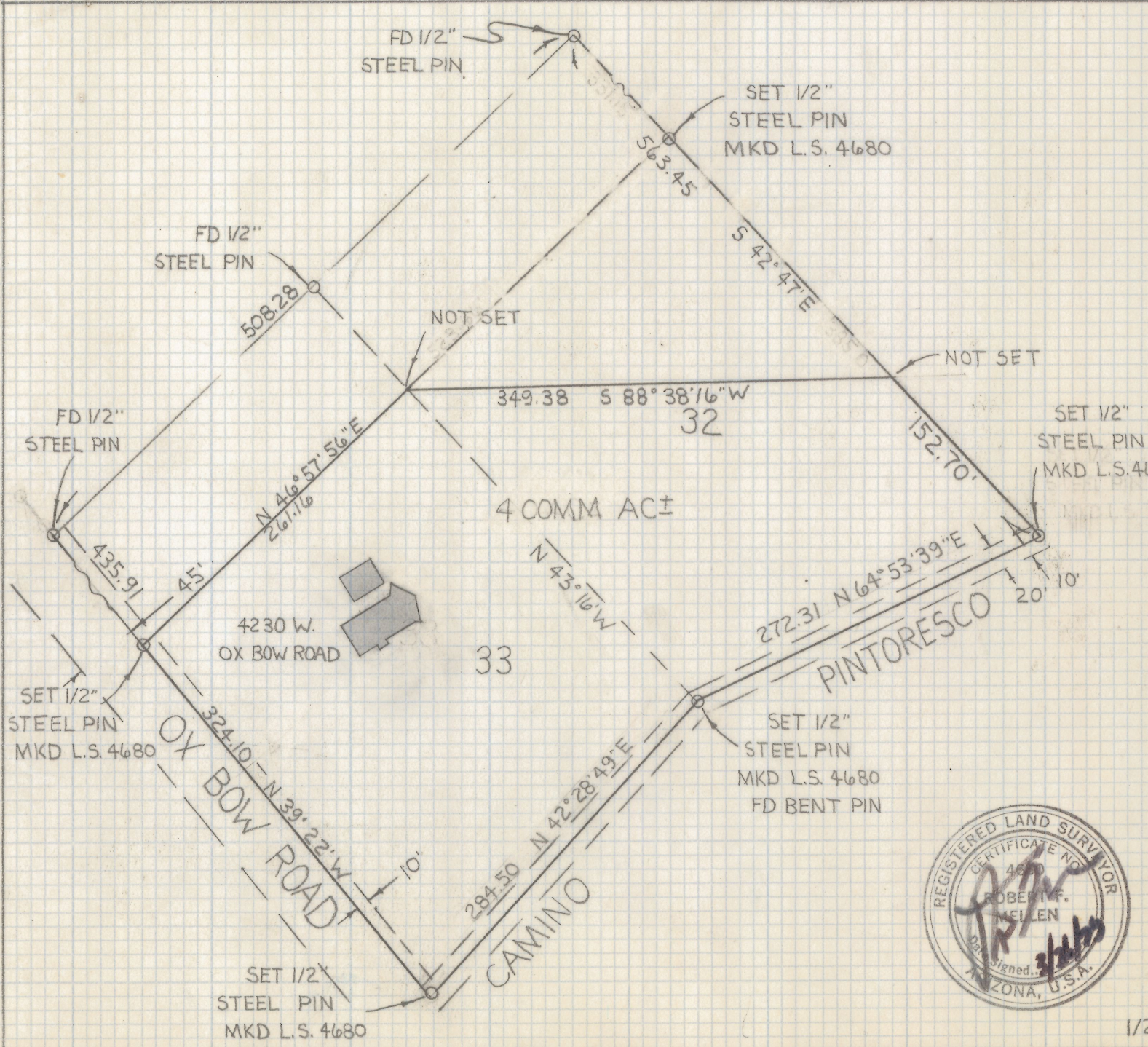


DISCLAIMER:

This unrecorded Record of Survey was donated to the City of Tucson. The City of Tucson provides this data for your personal use "as is." Additionally, the City of Tucson provides this information with the understanding that it is not guaranteed to be accurate, correct or complete and conclusions drawn from such information are the responsibility of the user.



SCALE 1"=100'

RESULTS OF SURVEY

OF A PORTION OF LOTS 32 AND 33 OF TUCSON FOOTHILL ESTATES NO.1 AS RECORDED IN BOOK 10 OF MAPS AND PLATS AT PAGE 81 AS RECORDED IN THE OFFICE OF THE PIMA COUNTY RECORDER PIMA COUNTY ARIZONA

NOTE

AREA TO \perp OF ALL ROADS



2-2019-090

ROBERT F. MELLEN
 REGISTERED LAND SURVEYOR
 TUCSON, ARIZONA
 JOB# 79-43

1/27/79 REVISED TO 4 COMM AC.