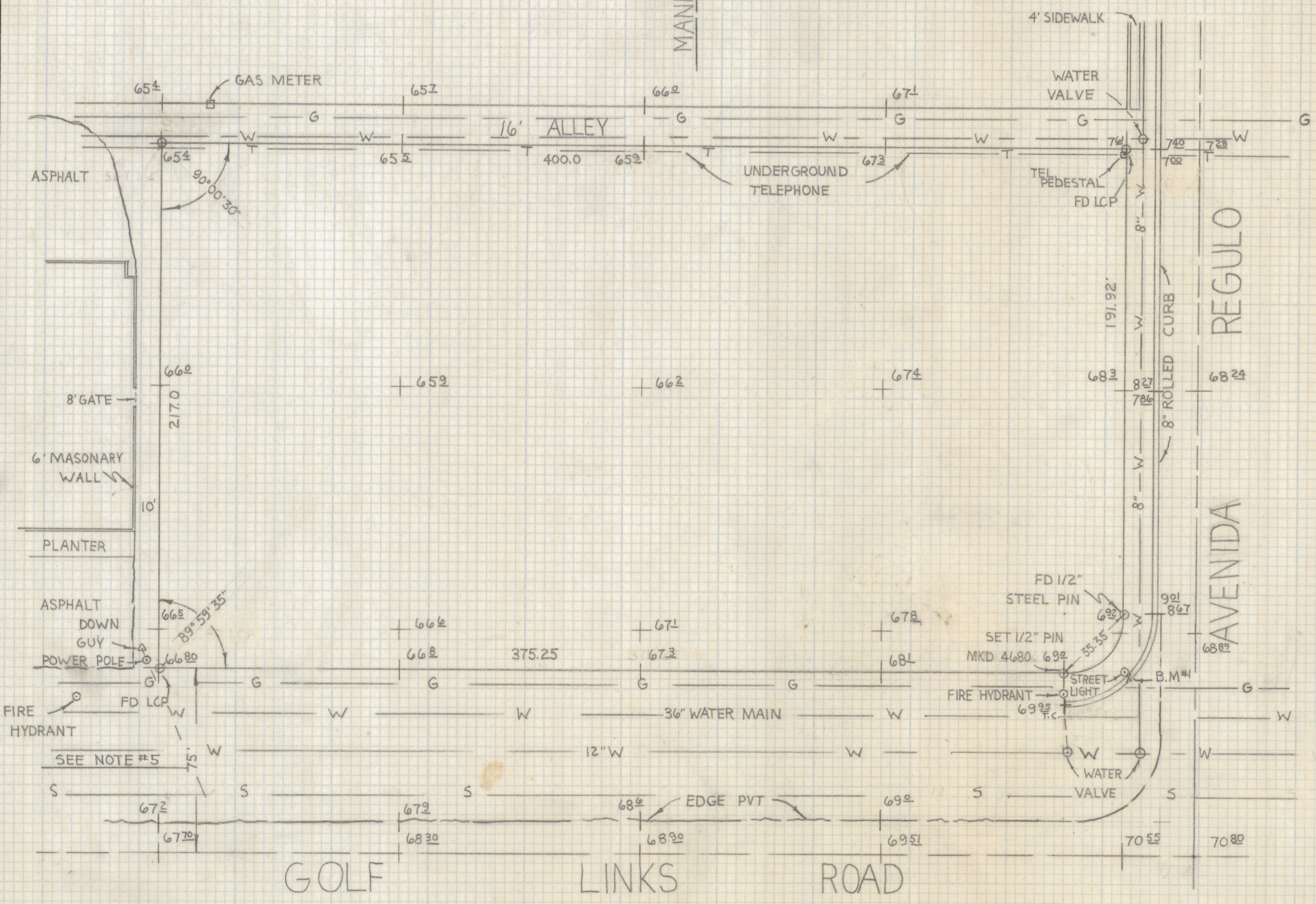
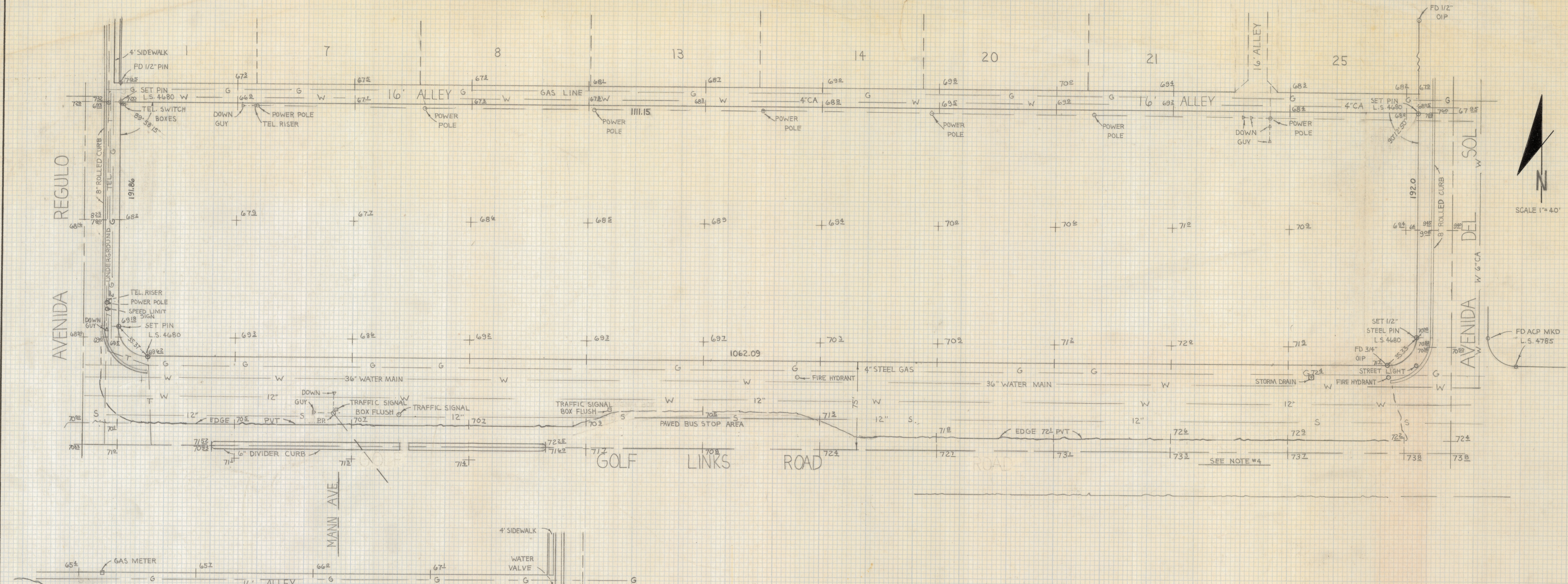


DISCLAIMER:

This unrecorded Record of Survey was donated to the City of Tucson. The City of Tucson provides this data for your personal use "as is." Additionally, the City of Tucson provides this information with the understanding that it is not guaranteed to be accurate, correct or complete and conclusions drawn from such information are the responsibility of the user.



RESULTS OF SURVEY

OF THE EAST 400 FEET OF TRACT 'A' BLOCK 51 AND ALL OF TRACT 'A' BLOCK 50 TERRA DEL SOL SUBDIVISION AS RECORDED IN BOOK 13 OF MAPS AND PLATS AT PAGE 16 AS RECORDED IN THE OFFICE OF THE PIMA COUNTY RECORDER PIMA COUNTY ARIZONA

NOTES

- 1) BENCH MARK CROSS ON TOP OF CURB MID RADIUS N.W. CORNER GOLF LINKS & AVENIDA REGULO ELEV. 2669.52
- 2) BENCH MARK DATUM (CITY OF TUCSON)
- 3) CAUTION UNDERGROUND UTILITIES IN THE AREA CALL BLUE STAKE BEFORE YOU DIG 792-2211
- 4) PLANS TO PAVE CURB & INSTALL MEDIAN CURBS ETC. ON GOLF LINKS ROAD ARE BEING PREPARED BY GENE ANDERSON NO CONSTRUCTION DATE AVAILABLE AT THIS TIME (I-77-16)
- 5) THERE IS A SEWER CLEAN OUT APPROXIMATELY 420' WEST OF THE SOUTH-WEST CORNER OF THIS SURVEY THE FLOW LINE OF THIS 8" VIT SEWER IS APPROXIMATELY 2653.62



2. 2019-092
 ROBERT F. MELLEN
 REGISTERED LAND SURVEYOR
 TUCSON, ARIZONA
 79-48