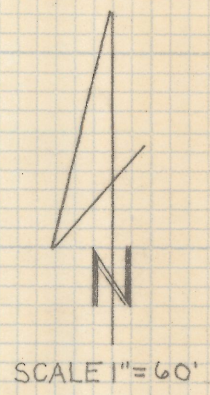
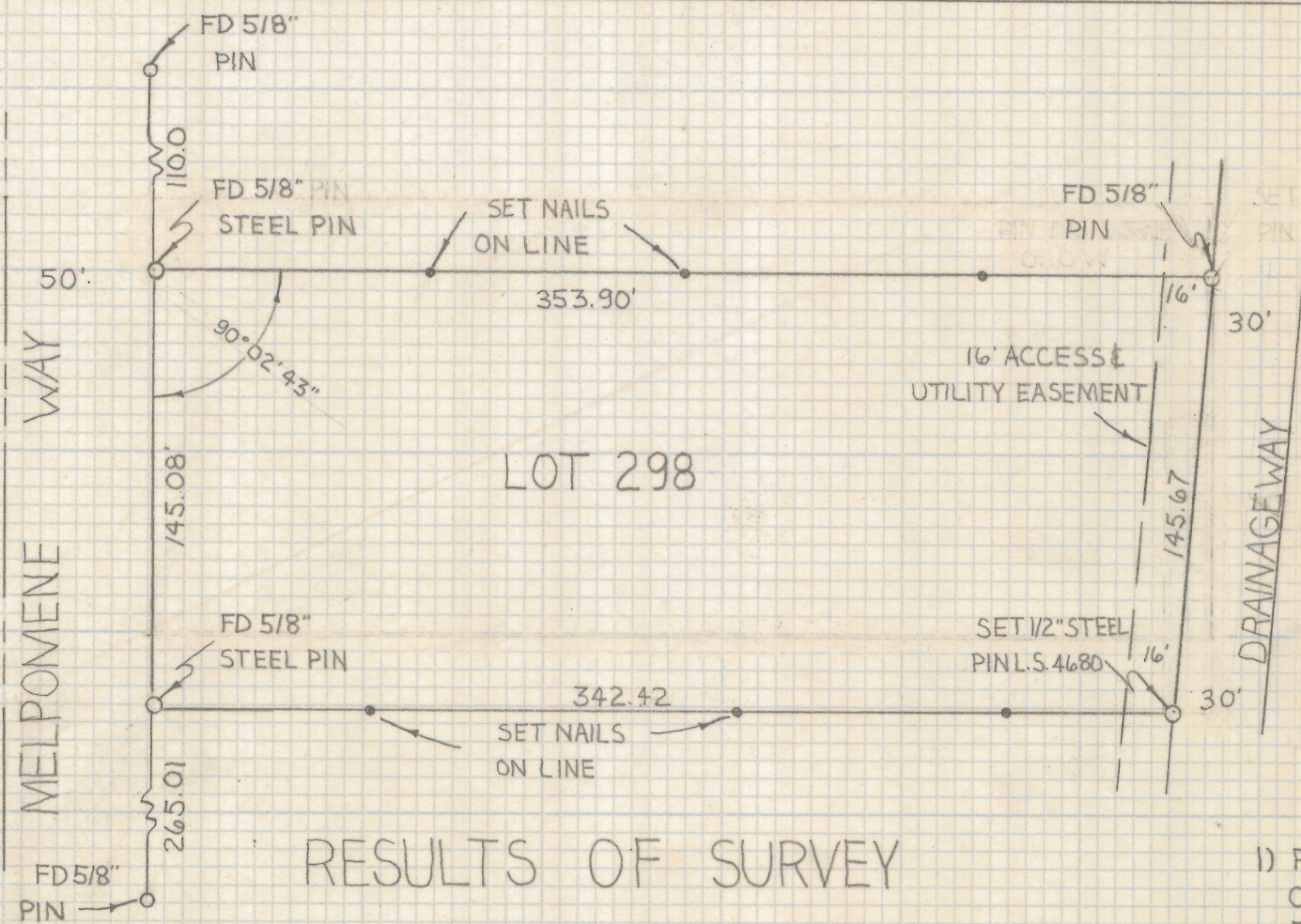


DISCLAIMER:

This unrecorded Record of Survey was donated to the City of Tucson. The City of Tucson provides this data for your personal use "as is." Additionally, the City of Tucson provides this information with the understanding that it is not guaranteed to be accurate, correct or complete and conclusions drawn from such information are the responsibility of the user.

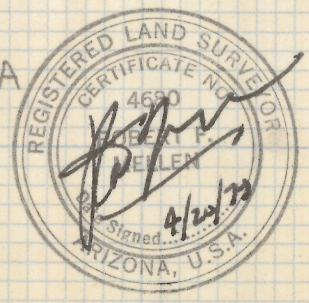


RESULTS OF SURVEY

OF LOT 298 BEL AIR RANCH ESTATES AS RECORDED IN BOOK 22 OF MAPS AND PLATS AT PAGE 57 IN THE OFFICE OF THE PIMA COUNTY RECORDER PIMA COUNTY ARIZONA

NOTE

1) FOUND SURVEY MONUMENTS CURVE NO. 14&15 USED TO ESTABLISH EAST LINE LOT 298



Z-2019-094

ROBERT F. MELLEN
REGISTERED LAND SURVEYOR
TUCSON, ARIZONA
JOB # 79-50