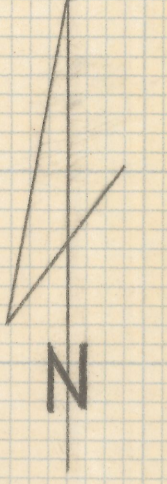


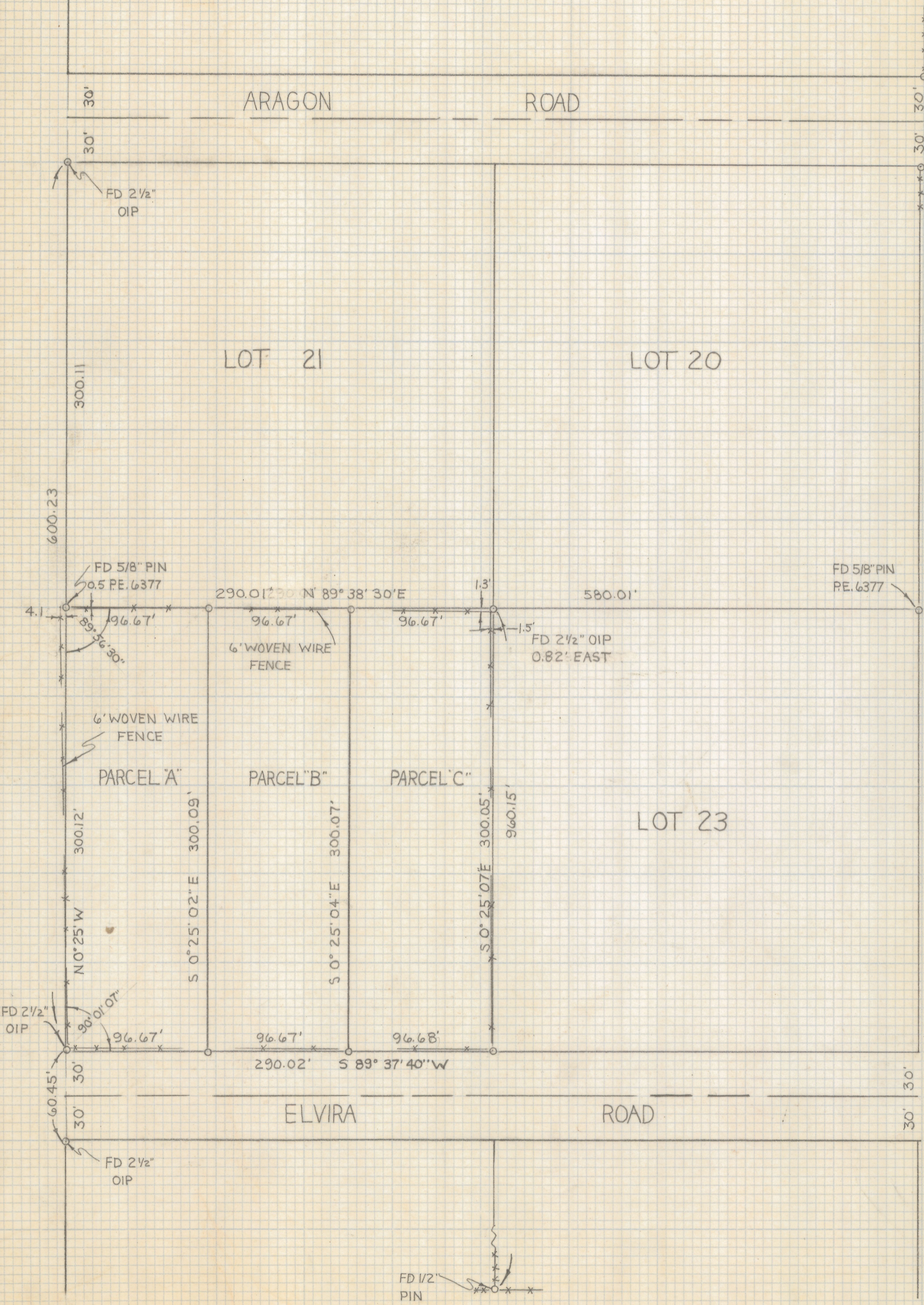
# **DISCLAIMER:**

**This unrecorded Record of Survey was donated to the City of Tucson. The City of Tucson provides this data for your personal use "as is." Additionally, the City of Tucson provides this information with the understanding that it is not guaranteed to be accurate, correct or complete and conclusions drawn from such information are the responsibility of the user.**





SCALE 1"=60'

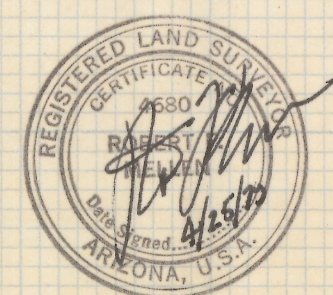


### RESULTS OF SURVEY

OF LOT TWENTY-TWO GOLDEN DAWN FARMS AS RECORDED IN BOOK 4 OF MAPS AND PLATS AT PAGE 98 AS RECORDED IN THE OFFICE OF THE PIMA COUNTY RECORDER, PIMA COUNTY, ARIZONA

### NOTES

- 1) p INDICATES SET 5/8" STEEL PIN MKD L.S. 4680 UNLESS NOTED
- 2) BASIS OF BEARINGS WEST LINE LOT 22 GOLDEN DAWN FARMS N0°25' W



**Z-2019-095**

ROBERT F. MELLEN  
 REGISTERED LAND SURVEYOR  
 TUCSON, ARIZONA  
 79-54