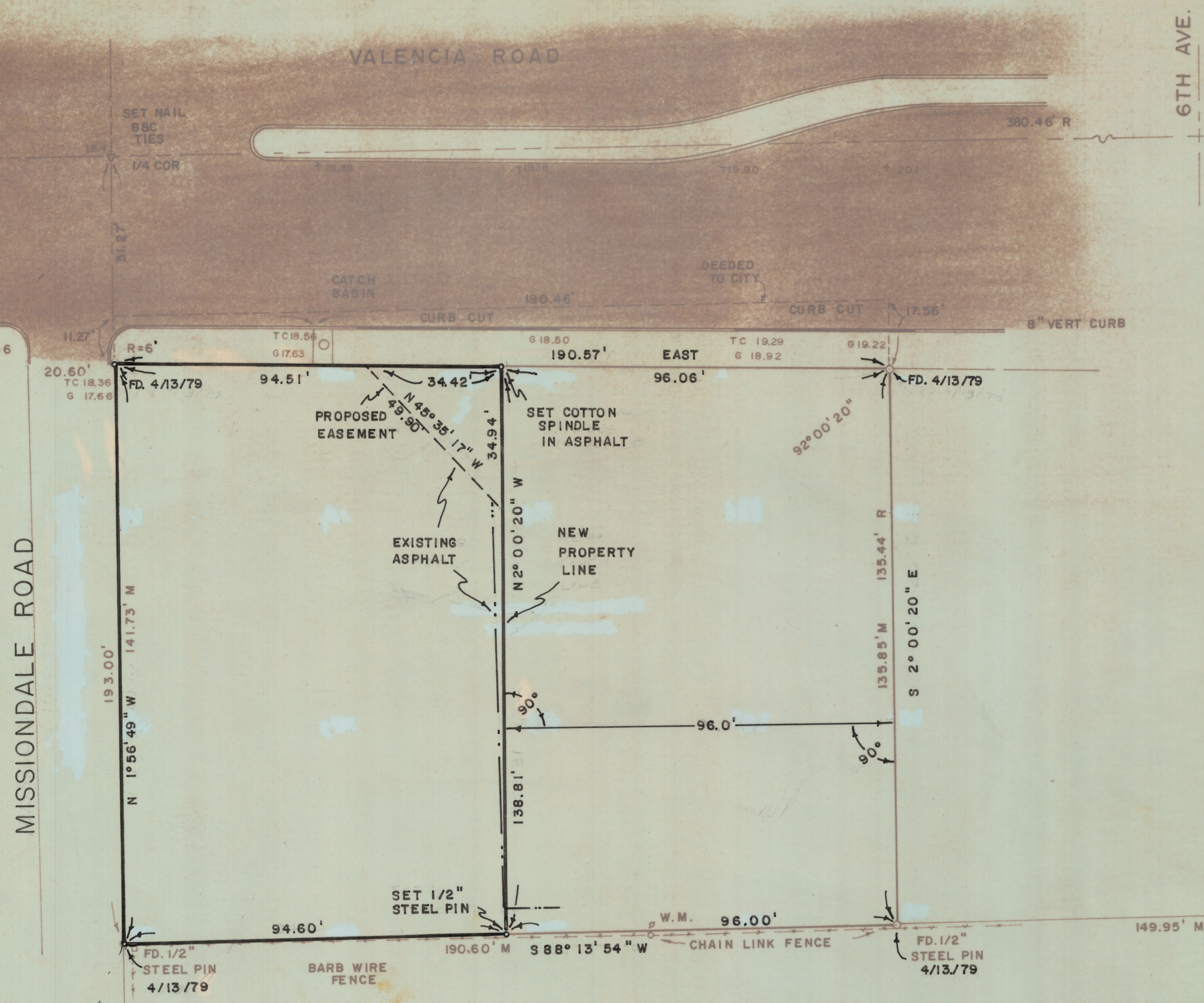


# **DISCLAIMER:**

**This unrecorded Record of Survey was donated to the City of Tucson. The City of Tucson provides this data for your personal use "as is." Additionally, the City of Tucson provides this information with the understanding that it is not guaranteed to be accurate, correct or complete and conclusions drawn from such information are the responsibility of the user.**



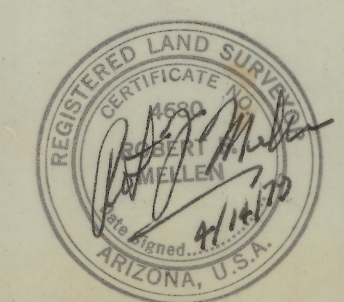


- NOTES**
- (1) INDICATES 1/2" STEEL PIN SET MKD. L.S. 4680 UNLESS NOTED
  - (2) BENCH MARK DATUM FROM CITY OF TUCSON PLAN I-66-6 (VALENCIA ROAD PAVING)
  - (3) B&C TIES BLANTON & CO. ENG. (ENGINEERS FOR PLAN I-66-6)
  - (4) W.M. - WATER METER
  - (5) T.C. - TOP OF CURB ELEV.
  - (6) G. - GUTTER ELEV.
  - (7) SEE JOB # 74-43
  - (8) NORTH LINE PARCEL ASSUMED BEARING (EAST)

**RESULTS OF SURVEY**

OF THE SOUTH 153.0 FEET OF THE NORTH 193.0 FEET OF THAT PART OF THE NORTH HALF OF THE NORTHWEST QUARTER OF THE NORTHEAST QUARTER OF SECTION 13, TOWNSHIP 15 SOUTH OF RANGE 13 EAST, GILA AND SALT RIVER BASE AND MERIDIAN, PIMA COUNTY, ARIZONA, LYING WEST OF THE WEST RIGHT-OF-WAY LINE OF SOUTH 6TH AVENUE (EXCEPT THE EAST 246.0 FEET THEREOF) AND EXCEPT THAT PORTION LYING WITHIN VALENCIA ROAD

FD. 2" BRASS PLUG IN HAND HOLE



**2-2019-099**  
 ROBERT F. MELLEN  
 REGISTERED LAND SURVEYOR  
 TUCSON, ARIZONA  
 JOB # 79-63

REVISED 4-13-79 (SPLIT)

APRIL 1979