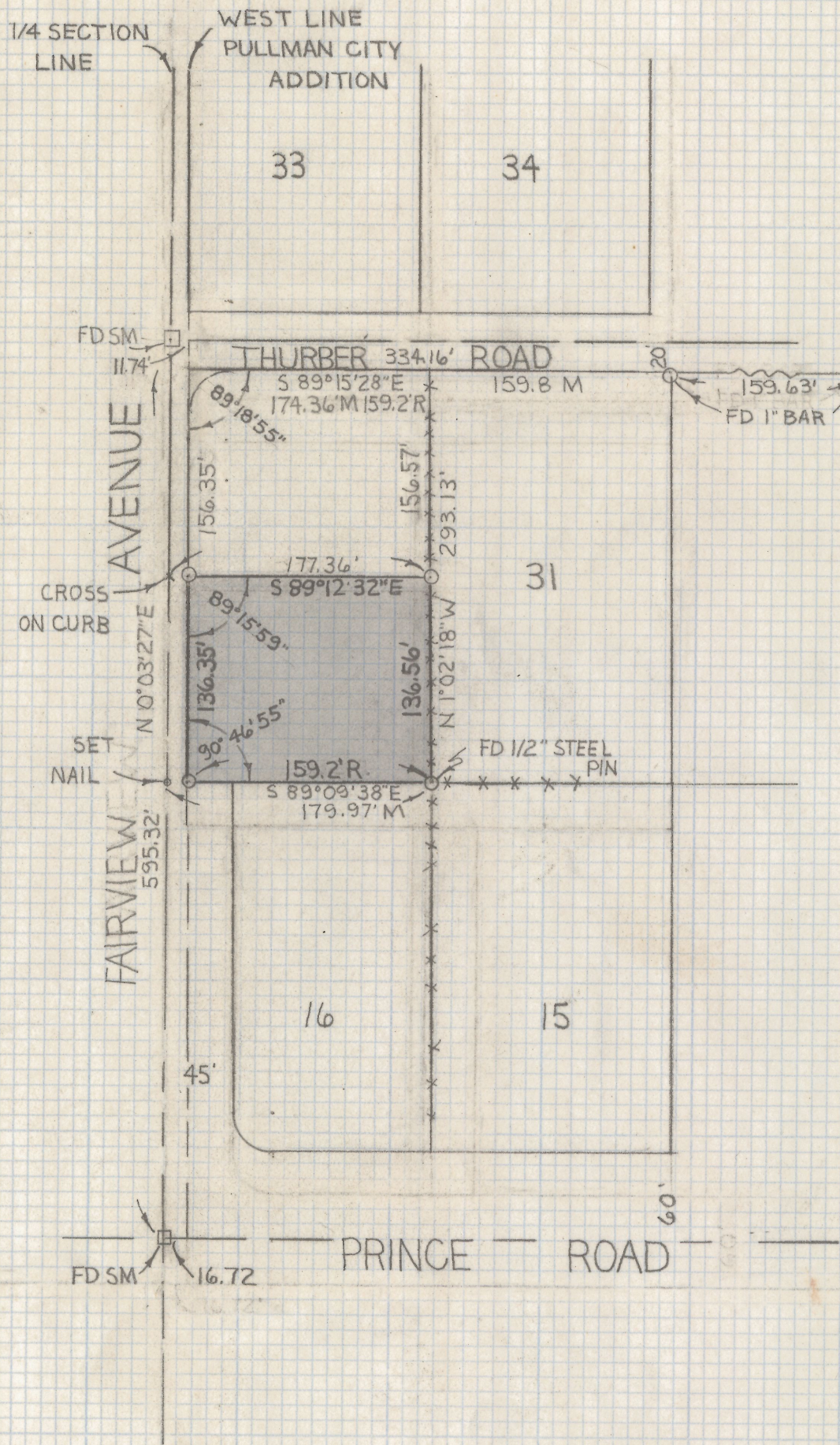
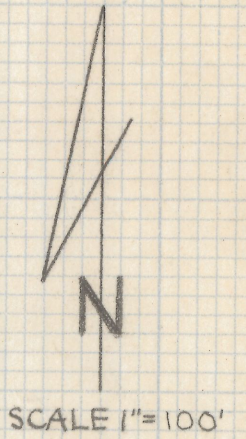


DISCLAIMER:

This unrecorded Record of Survey was donated to the City of Tucson. The City of Tucson provides this data for your personal use "as is." Additionally, the City of Tucson provides this information with the understanding that it is not guaranteed to be accurate, correct or complete and conclusions drawn from such information are the responsibility of the user.



— NOTES —

- 1) INDICATES ACP PIN. PIN MKD L.S. 4680 UNLESS NOTED
- 2) 1/4 SECTION LINE FROM CITY OF TUCSON PLAN H-64-6

RESULTS OF SURVEY

OF LOT 32 OF PULLMAN CITY ADDITION AS RECORDED IN BOOK FIVE OF MAPS AND PLATS AT PAGE TWENTY-SEVEN AS RECORDED IN THE OFFICE OF THE PIMA COUNTY RECORDER PIMA COUNTY ARIZONA

2-2019-105

ROBERT F MELLEN
 REGISTERED LAND SURVEYOR
 TUCSON ARIZONA
 JOB# 79-75

ROBERT F. MELLEN
 REGISTERED LAND SURVEYOR
 PIMA COUNTY ARIZONA