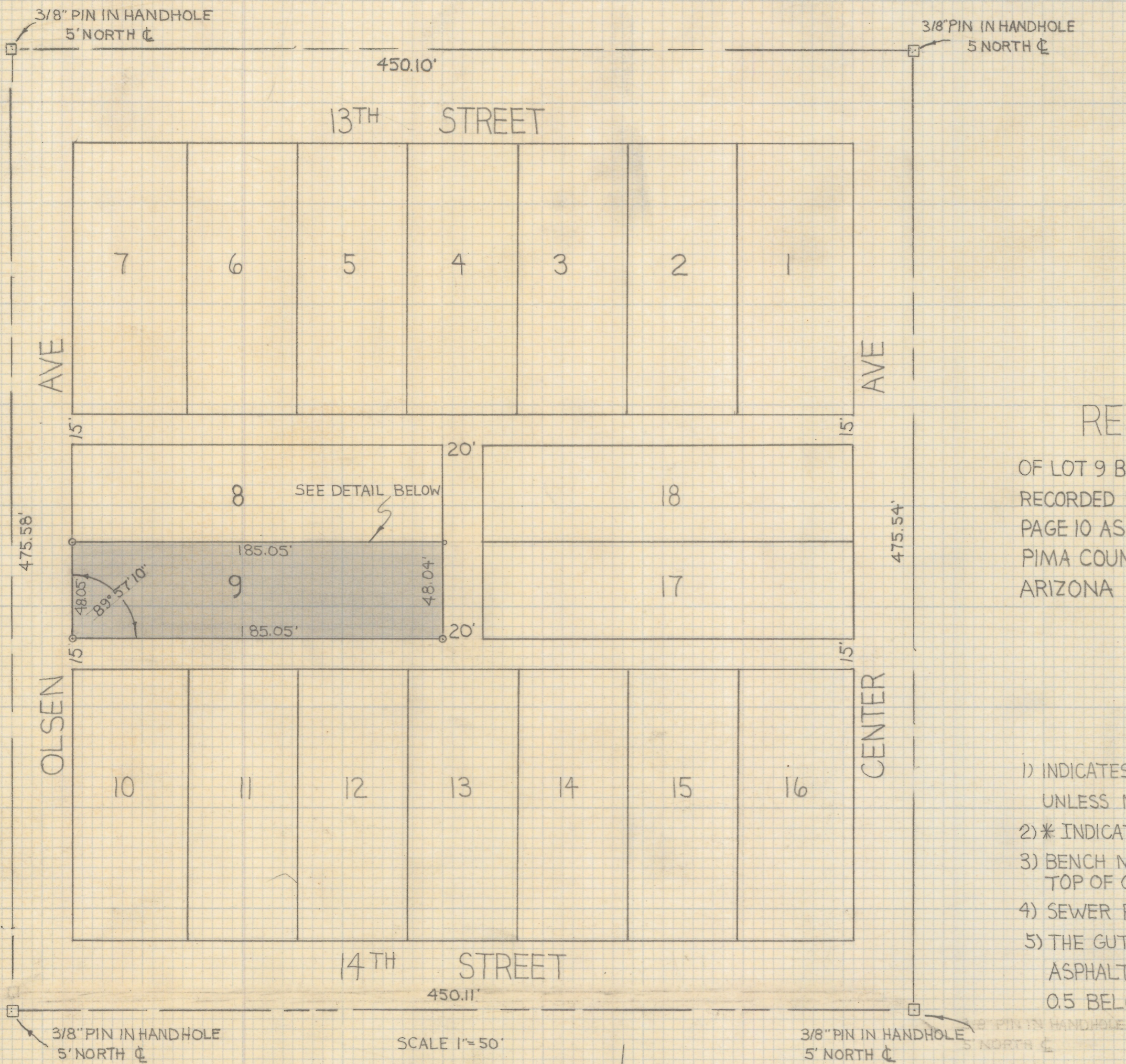
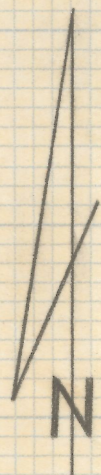


DISCLAIMER:

This unrecorded Record of Survey was donated to the City of Tucson. The City of Tucson provides this data for your personal use "as is." Additionally, the City of Tucson provides this information with the understanding that it is not guaranteed to be accurate, correct or complete and conclusions drawn from such information are the responsibility of the user.

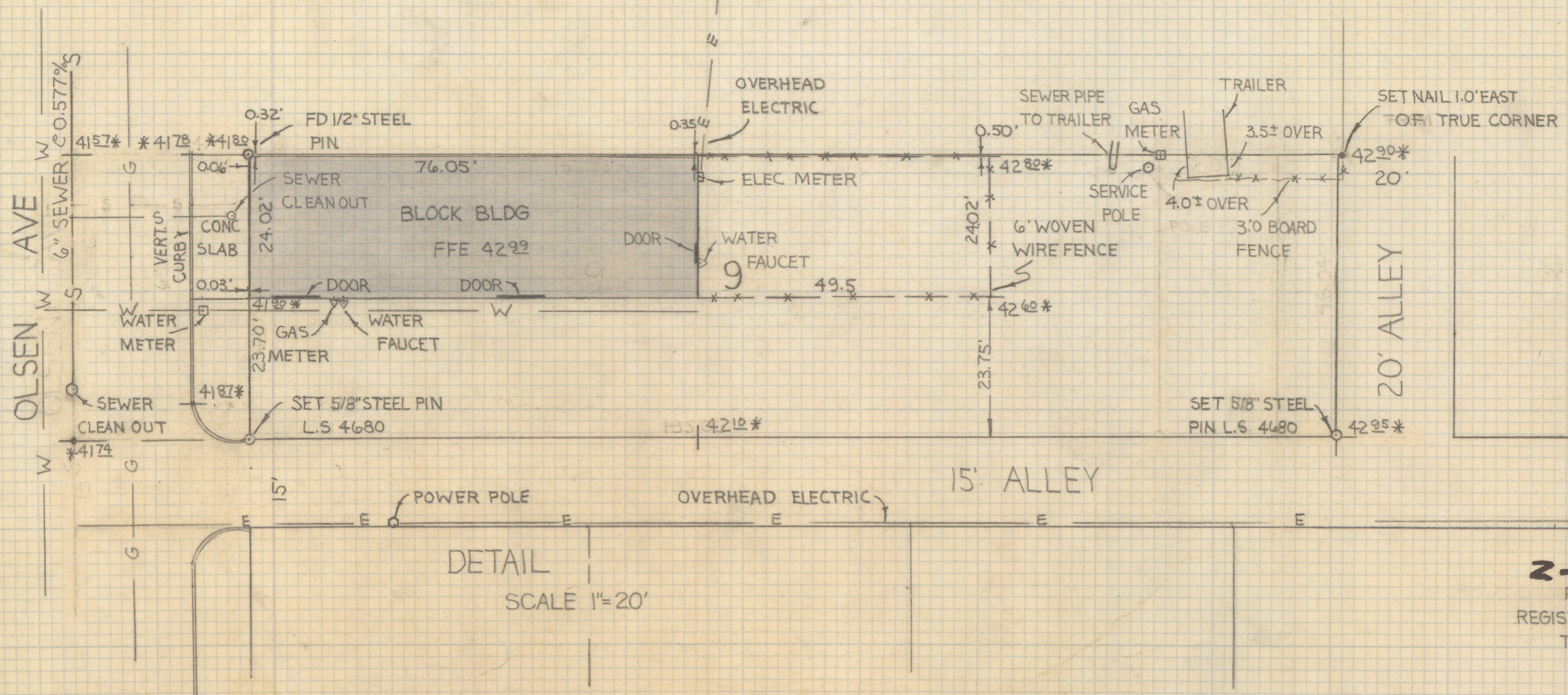


RESULTS OF SURVEY

OF LOT 9 BLOCK 16 OF AMERICAN VILLA AS
 RECORDED IN BOOK 3 OF MAPS AND PLATS AT
 PAGE 10 AS RECORDED IN THE OFFICE OF THE
 PIMA COUNTY RECORDER PIMA COUNTY
 ARIZONA

- NOTES -

- 1) INDICATES SET 5/8" STEEL PIN MKD L.S. 4680 UNLESS NOTED.
- 2) * INDICATES EXISTING ELEVATIONS
- 3) BENCH MARK DATUM CITY OF TUCSON PLAN I-571 TOP OF CURB RETURN ELEV 42.10
- 4) SEWER PLAN CITY OF TUCSON PLAN G-189
- 5) THE GUTTERS ON OLSEN HAVE BEEN FILLED WITH ASPHALT TO FORM WEDGE CURBS & APPROXIMATELY 0.5 BELOW TOP OF CURB.



2-2019-110
 ROBERT F. MELLEN
 REGISTERED LAND SURVEYOR
 TUCSON, ARIZONA
 JOB # 79-84