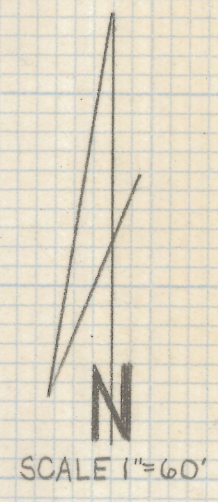
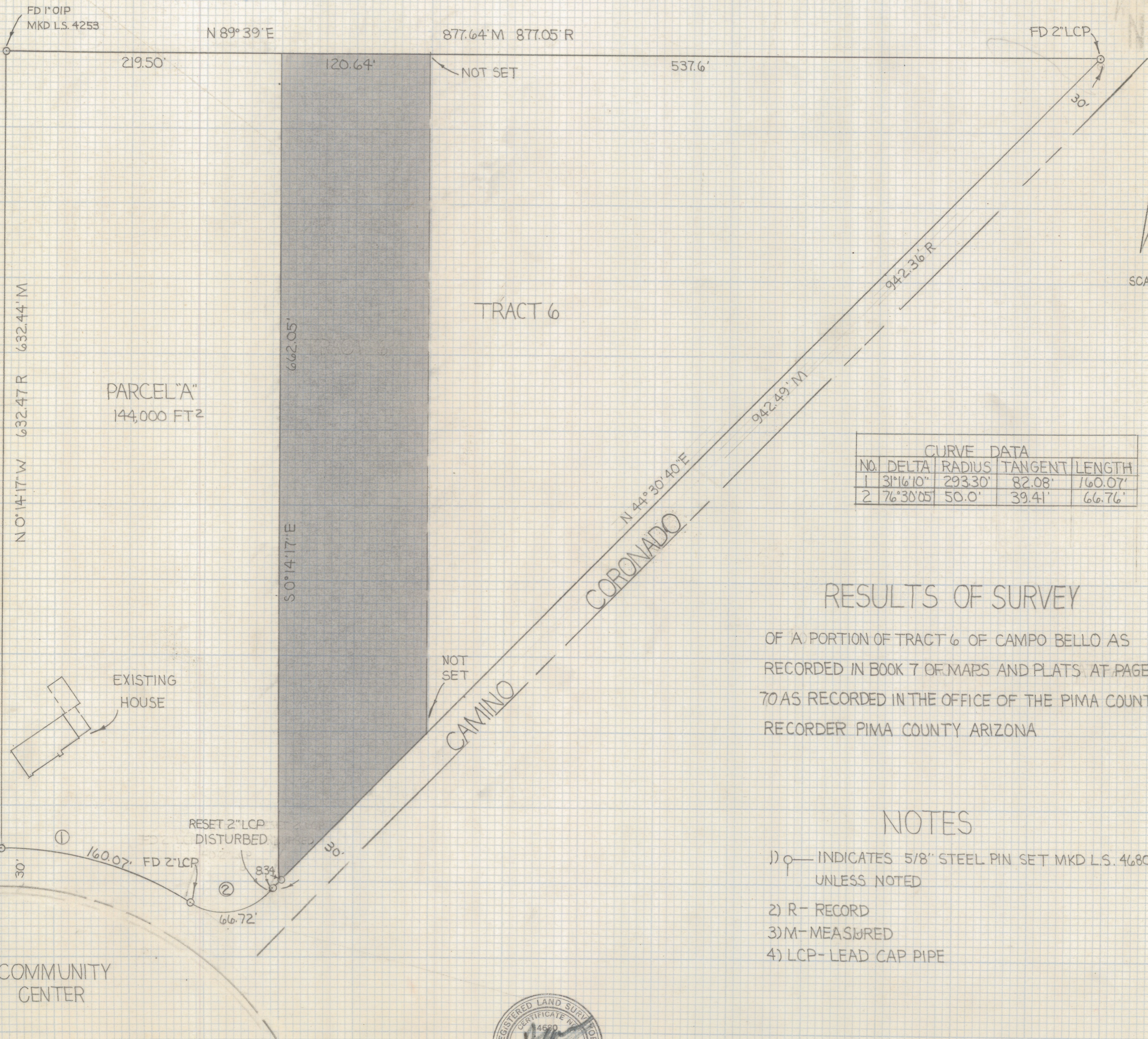


# **DISCLAIMER:**

**This unrecorded Record of Survey was donated to the City of Tucson. The City of Tucson provides this data for your personal use "as is." Additionally, the City of Tucson provides this information with the understanding that it is not guaranteed to be accurate, correct or complete and conclusions drawn from such information are the responsibility of the user.**



CURVE DATA				
NO.	DELTA	RADIUS	TANGENT	LENGTH
1	31°16'10"	293.30'	82.08'	160.07'
2	76°30'05"	50.0'	39.41'	66.76'

### RESULTS OF SURVEY

OF A PORTION OF TRACT 6 OF CAMPO BELLO AS RECORDED IN BOOK 7 OF MAPS AND PLATS AT PAGE 70 AS RECORDED IN THE OFFICE OF THE PIMA COUNTY RECORDER PIMA COUNTY ARIZONA

### NOTES

- 1) INDICATES 5/8" STEEL PIN SET MKD L.S. 4680 UNLESS NOTED
- 2) R- RECORD
- 3) M- MEASURED
- 4) LCP- LEAD CAP PIPE



**2-2019-114**

ROBERT F. MELLEN  
 REGISTERED LAND SURVEYOR  
 TUCSON, ARIZONA  
 JOB# 79-89