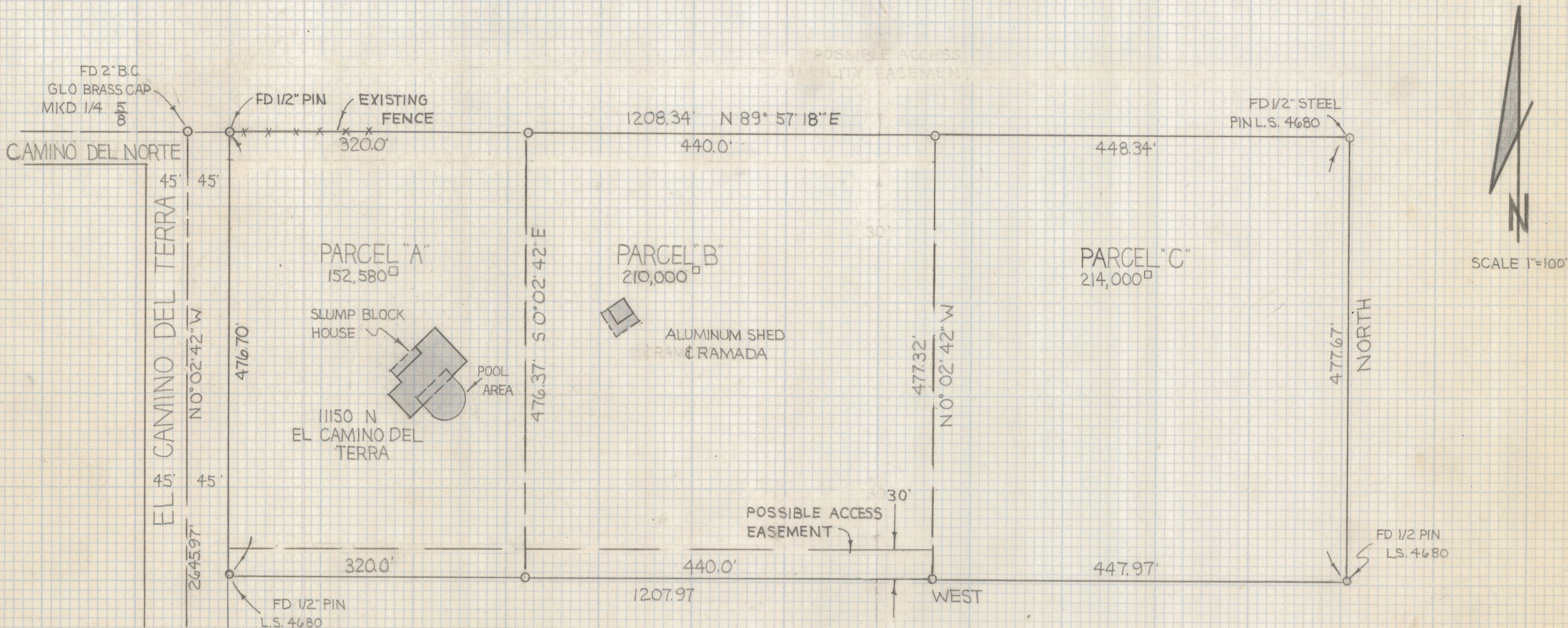


DISCLAIMER:

This unrecorded Record of Survey was donated to the City of Tucson. The City of Tucson provides this data for your personal use "as is." Additionally, the City of Tucson provides this information with the understanding that it is not guaranteed to be accurate, correct or complete and conclusions drawn from such information are the responsibility of the user.



PROPOSED DIVISION

OF A PORTION OF THE EAST HALF OF SECTION EIGHT
 TOWNSHIP TWELVE SOUTH OF RANGE THIRTEEN EAST
 OF GILA SALT RIVER BASE AND MERIDIAN, PIMA
 COUNTY, ARIZONA

NOTES

- 1) CORNERS SET 6/28/79
- 2) REFERENCE JOB# 72-43 PARCEL IV A
- 3) ○ INDICATES SET 5/8" STEEL PIN MKD L.S. 4680 UNLESS NOTED



2-2019-116

ROBERT F. MELLEN
 REGISTERED LAND SURVEYOR
 TUCSON, ARIZONA
 JOB# 79-92