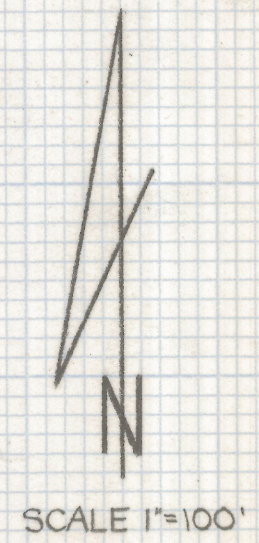
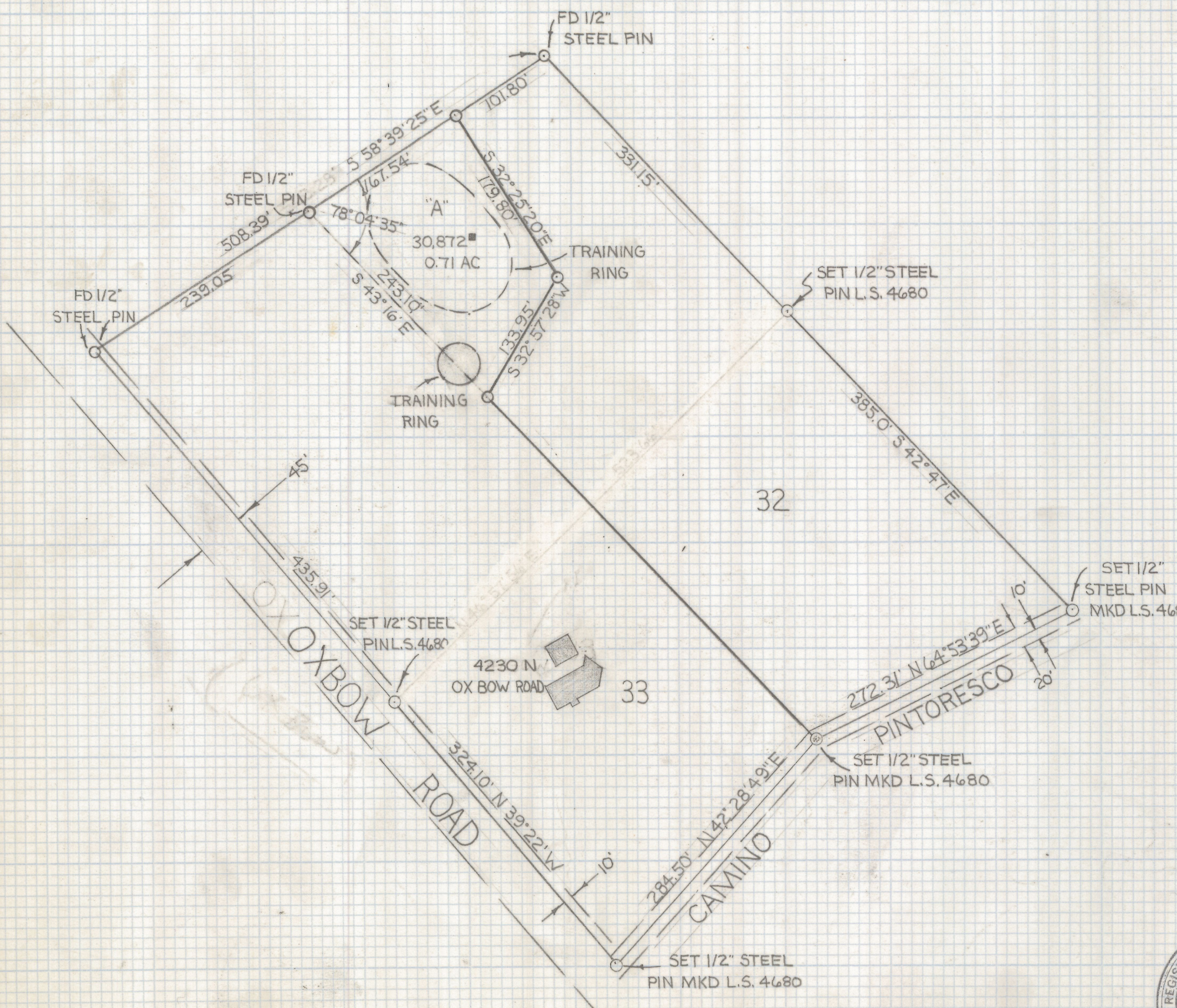


DISCLAIMER:

This unrecorded Record of Survey was donated to the City of Tucson. The City of Tucson provides this data for your personal use "as is." Additionally, the City of Tucson provides this information with the understanding that it is not guaranteed to be accurate, correct or complete and conclusions drawn from such information are the responsibility of the user.



RESULTS OF SURVEY

OF A PORTION OF LOTS 32 AND 33 OF TUCSON
FOOTHILL ESTATES NO.1 AS RECORDED IN BOOK 10
OF MAPS AND PLATS AT PAGE 81 AS RECORDED
IN THE OFFICE OF THE PIMA COUNTY RECORDER
PIMA COUNTY ARIZONA

NOTES

- 1) AREA TO \odot OF ALL ROADS
- 2) \odot -INDICATES SET 5/8" STEEL PIN MKD L.S. 4680
UNLESS NOTED



Z. 2019-123
ROBERT F. MELLEN
REGISTERED LAND SURVEYOR
TUCSON, ARIZONA
JOB# 79-101