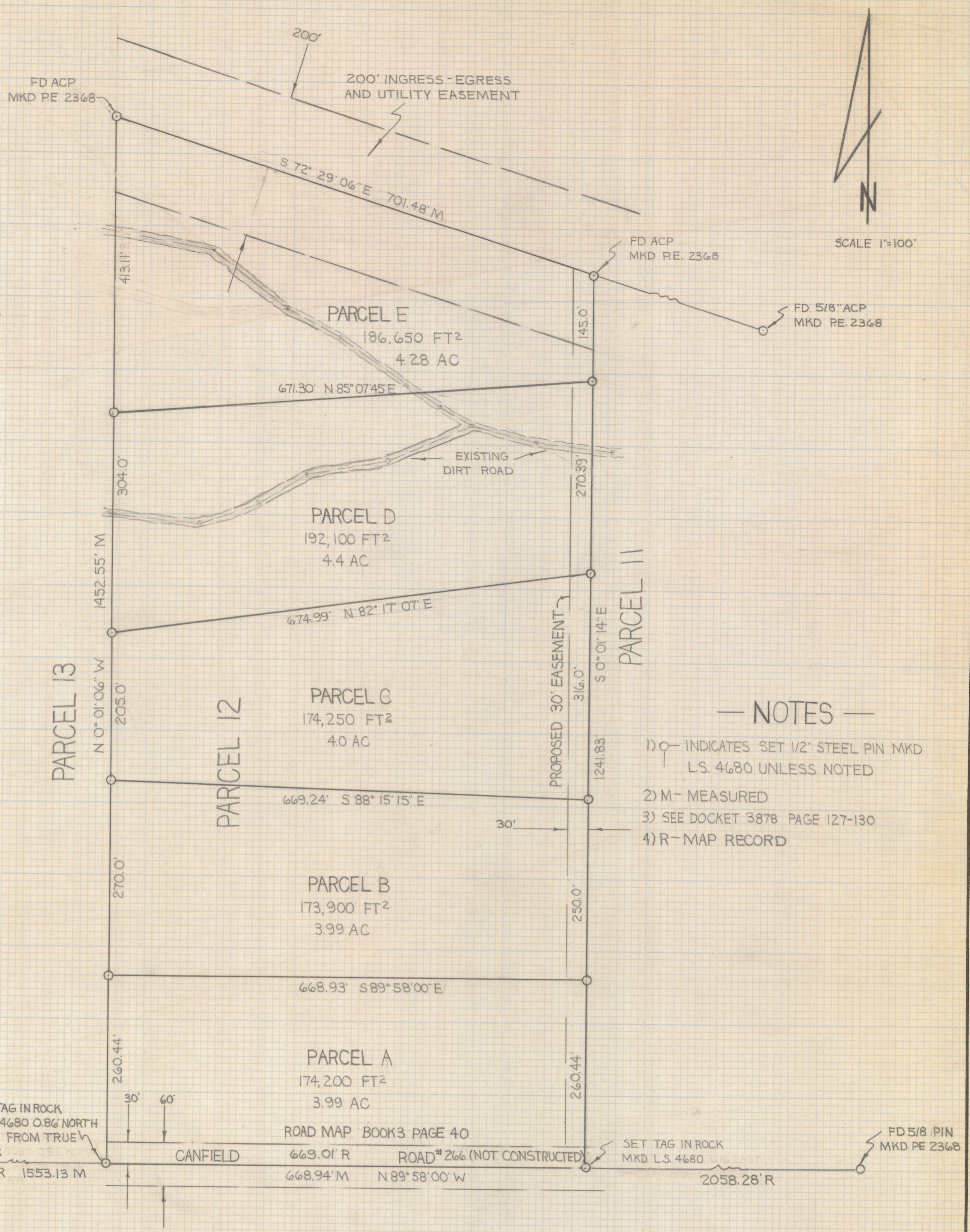


# **DISCLAIMER:**

**This unrecorded Record of Survey was donated to the City of Tucson. The City of Tucson provides this data for your personal use "as is." Additionally, the City of Tucson provides this information with the understanding that it is not guaranteed to be accurate, correct or complete and conclusions drawn from such information are the responsibility of the user.**



— NOTES —

- 1) ○ INDICATES SET 1/2" STEEL PIN MKD L.S. 4680 UNLESS NOTED
- 2) M - MEASURED
- 3) SEE DOCKET 3878 PAGE 127-130
- 4) R - MAP RECORD

RESULTS OF SURVEY

OF PARCEL 12 RANCHO REAL A PORTION OF THE SOUTH HALF OF SECTION TWENTY-SEVEN TOWNSHIP THIRTEEN SOUTH RANGE TWELVE EAST GILA AND SALT RIVER BASE AND MERIDIAN PIMA COUNTY ARIZONA



2-2019-124  
 ROBERT F. MELLEN  
 REGISTERED LAND SURVEYOR  
 TUCSON, ARIZONA  
 JOB# 79-104