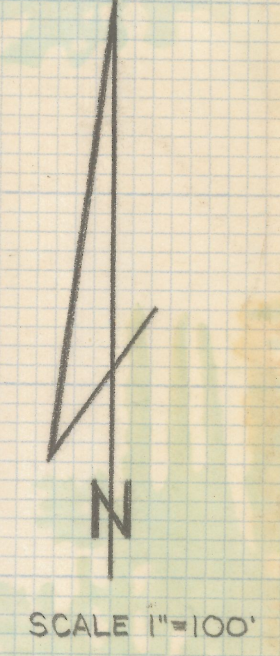
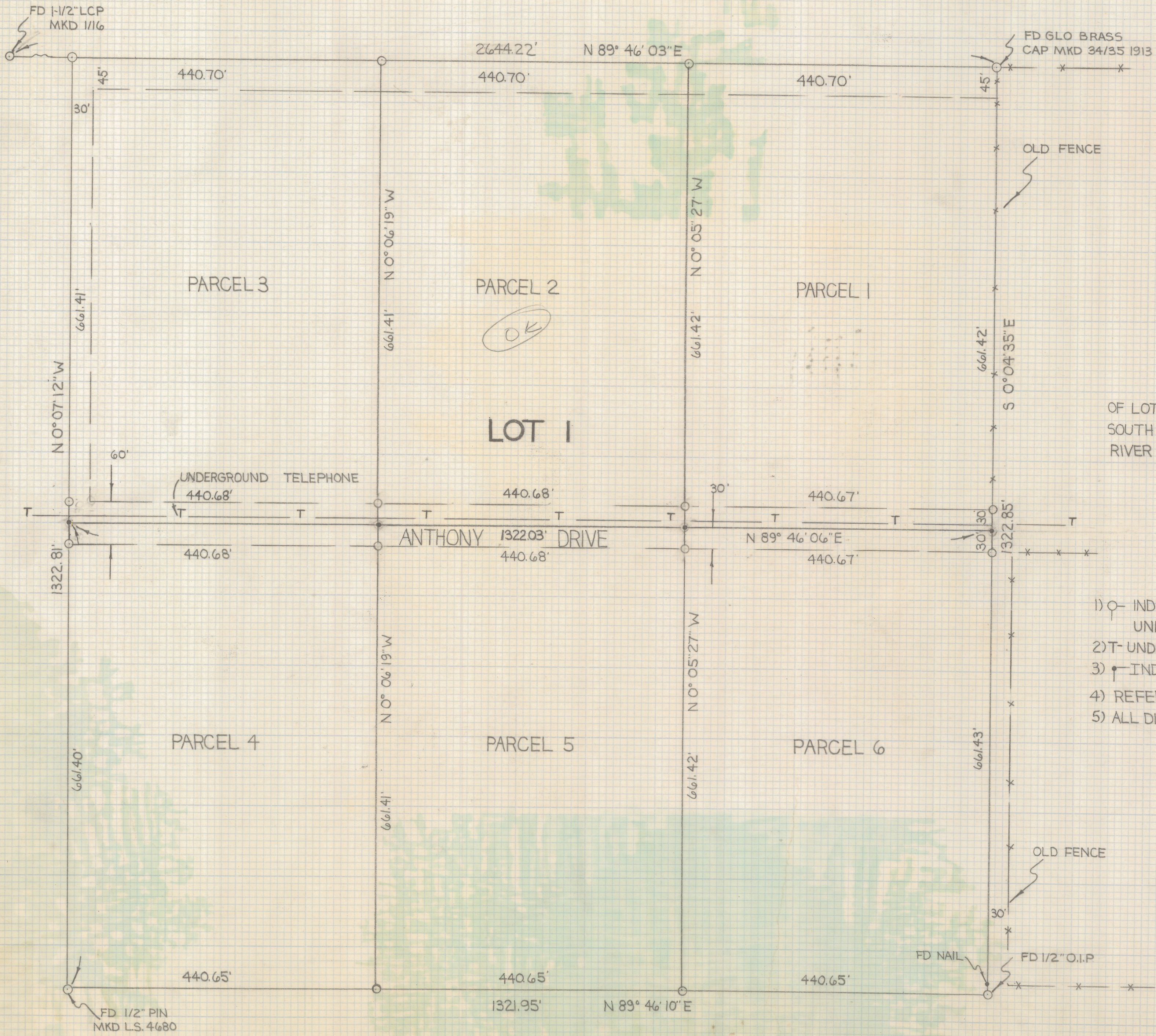


DISCLAIMER:

This unrecorded Record of Survey was donated to the City of Tucson. The City of Tucson provides this data for your personal use "as is." Additionally, the City of Tucson provides this information with the understanding that it is not guaranteed to be accurate, correct or complete and conclusions drawn from such information are the responsibility of the user.



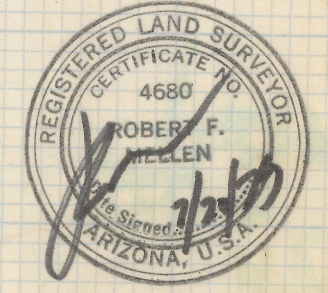
RESULTS OF SURVEY

OF LOT 1 OF SECTION THIRTY-FOUR TOWNSHIP TWELVE SOUTH OF RANGE ELEVEN EAST GILA AND SALT RIVER BASE AND MERIDIAN, PIMA COUNTY, ARIZONA

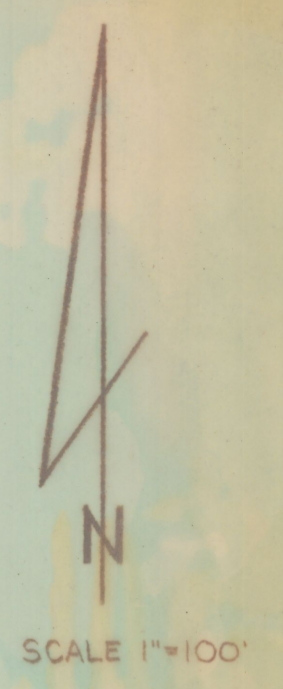
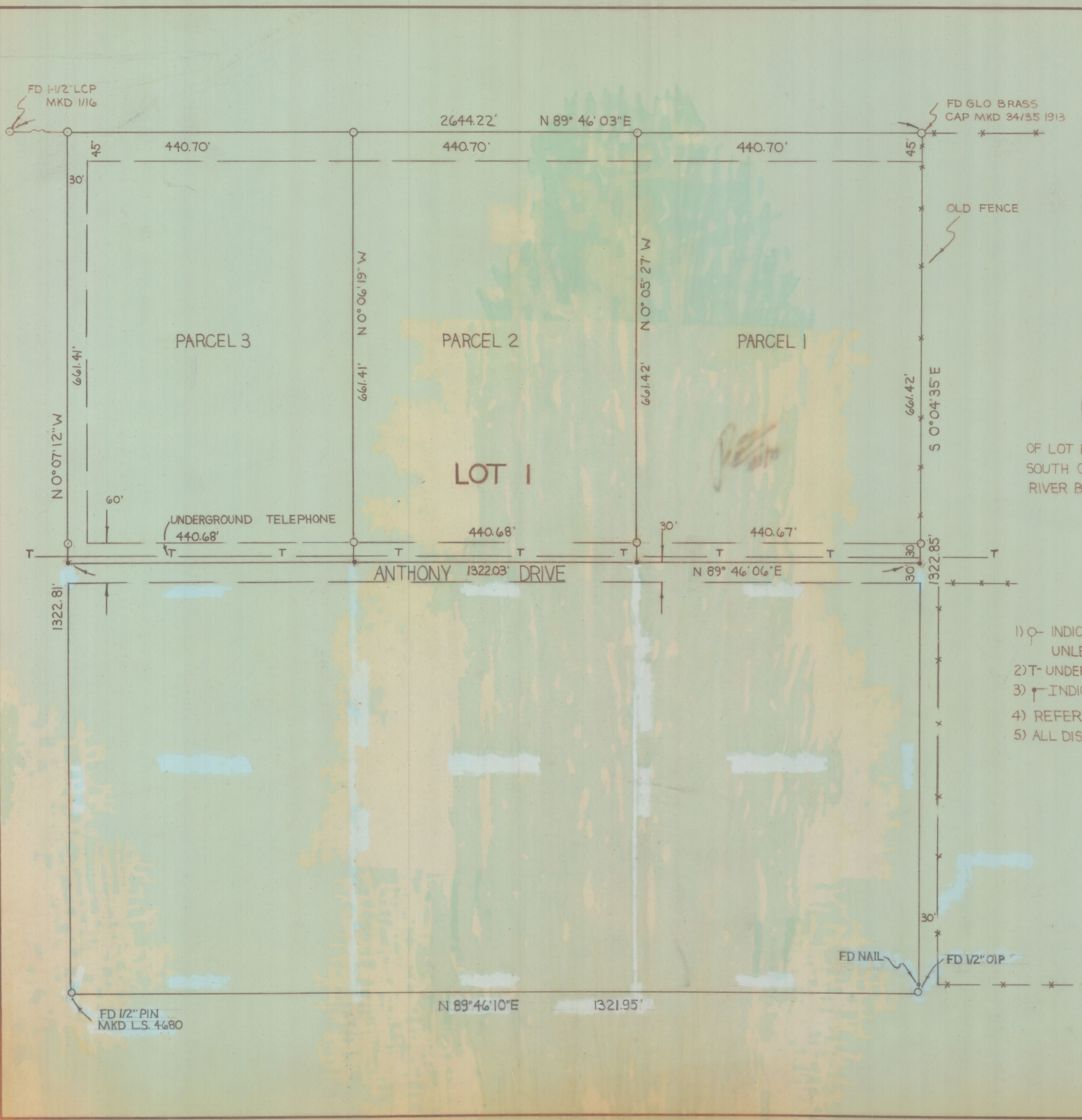
NOTES

- 1) \circ INDICATES SET 5/8" STEEL PIN MKD L.S. 4680 UNLESS NOTED
- 2) T- UNDERGROUND TELEPHONE LINE
- 3) \bullet INDICATES SET NAIL UNLESS NOTED
- 4) REFERENCE SEE JOB # 74-6
- 5) ALL DISTANCES TO \perp OF ROADS

Z-2019-127-001



ROBERT F MELLEN
 REGISTERED LAND SURVEYOR
 TUCSON, ARIZONA
 JOB# 79-111



RESULTS OF SURVEY

OF LOT 1 OF SECTION THIRTY-FOUR TOWNSHIP TWELVE SOUTH OF RANGE ELEVEN EAST GILA AND SALT RIVER BASE AND MERIDIAN, PIMA COUNTY, ARIZONA

NOTES

- 1) \odot INDICATES SET 5/8" STEEL PIN MKD L.S. 4680 UNLESS NOTED
- 2) T- UNDERGROUND TELEPHONE LINE
- 3) \bullet INDICATES SET NAIL UNLESS NOTED
- 4) REFERENCE SEE JOB # 74-6
- 5) ALL DISTANCES TO \odot OF ROADS

Z-2019-127002

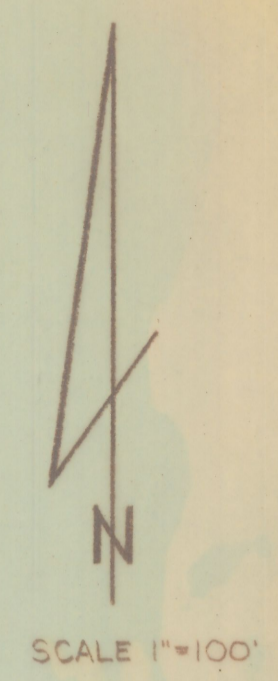


ROBERT F. MELLEN
 REGISTERED LAND SURVEYOR
 TUCSON, ARIZONA
 JOB # 79-111

FD 1-1/2" LCP
MKD 1/16

2644.22' N 89° 46' 03" E

FD GLO BRASS
CAP MKD 34/35 1913



LOT 1

RESULTS OF SURVEY

OF LOT 1 OF SECTION THIRTY-FOUR TOWNSHIP TWELVE
SOUTH OF RANGE ELEVEN EAST GILA AND SALT
RIVER BASE AND MERIDIAN, PIMA COUNTY, ARIZONA

UNDERGROUND TELEPHONE

ANTHONY DRIVE

NOTES

- 1) INDICATES SET 5/8" STEEL PIN MKD L.S. 4680 UNLESS NOTED
- 2) T- UNDERGROUND TELEPHONE LINE
- 3) INDICATES SET NAIL UNLESS NOTED
- 4) REFERENCE SEE JOB # 74-6
- 5) ALL DISTANCES TO ϕ OF ROADS

Z-2019-127-003



ROBERT F. MELLEN
REGISTERED LAND SURVEYOR
TUCSON, ARIZONA
JOB # 73-111

